

# AVIDIPTA

Homes for gracious living



**Bengal Peerless Housing Development Company Limited**

(A Joint Sector Company of West Bengal Housing Board and The Peerless General Finance and Investment Co. Ltd.)

Registered Office : 6/1A, Moira Street, 'Mangaldeep', Kolkata 700 017

Phone : (033) 2281 2601, 2281 2602, 2283 6227, 2283 6230

Fax : (033) 2280 4473

bphdc@bengalpeerless.com ■ Website : www.bengalpeerless.com

**Bengal Peerless**

Designed by Sushovan Ghose Associates and Printed at N. K. Gossain Pvt. Ltd.

## Upscale **LIVING**

Upscale living has a new address - Avidipta. At South Kolkata. On Eastern Metropolitan Bypass.

Far enough from the madding crowd, but not far away. Modern condominium for gracious living - secure, luxurious and comfortable.

With a complex of 1068 apartments in 15 blocks Avidipta leaves 52% of land free for lush landscape.

It is your home in tune with your life-style.

## Advantage **AVIDIPTA**

### DESIGN ADVANTAGE

- ◆ The blocks are strategically located around a central open space in a way that the southern breeze is your constant companion
- ◆ The design allows optimum use of space within floor area as per KMC building rules

### ADVANTAGE : SENIOR CITIZENS

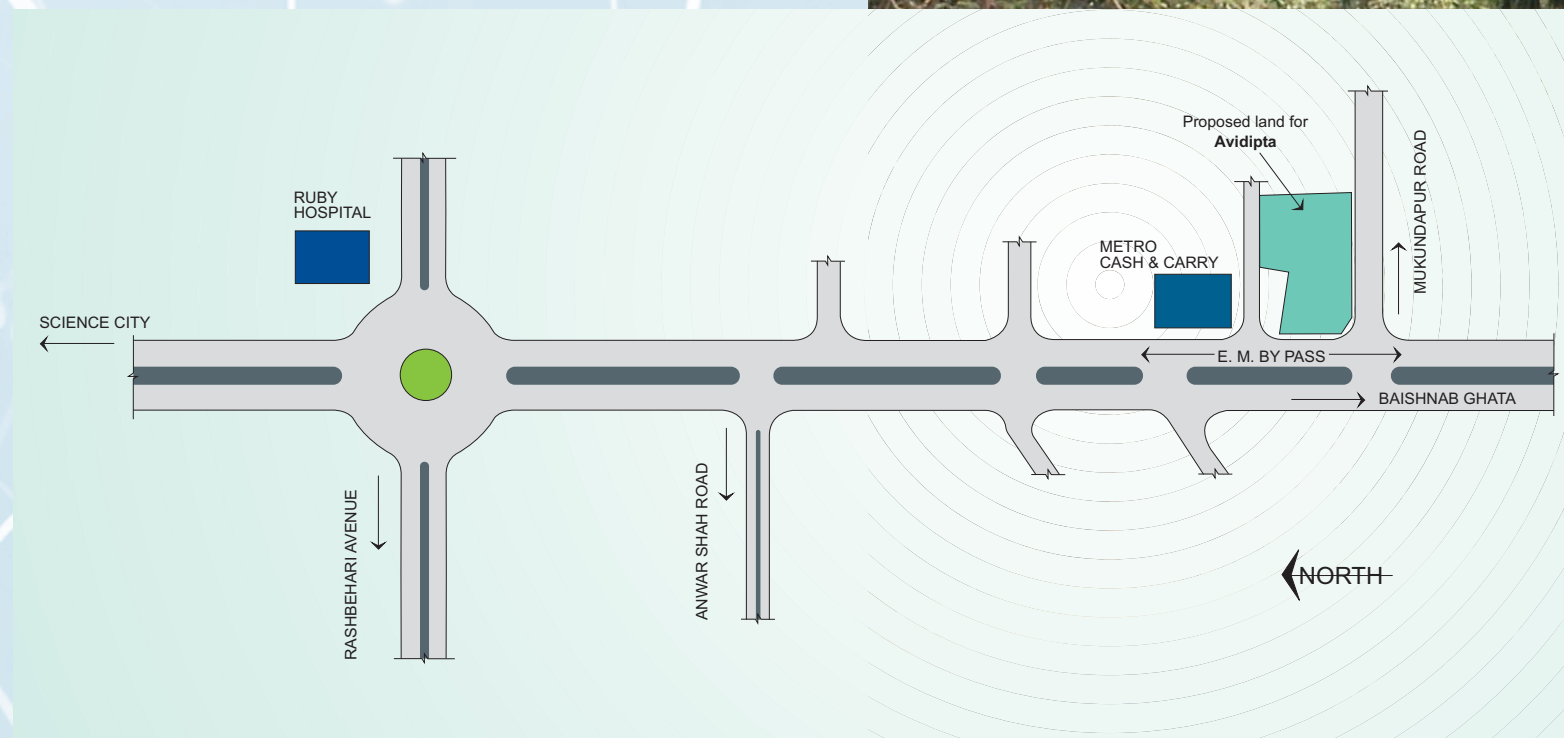
- ◆ Specially designed flats for senior citizens that allow for their special needs
- ◆ Medical Clinic with doctor in attendance
- ◆ Restaurant with take-away counter and home delivery facility



# Prime LOCATION

Adjacent to Metro Cash & Carry, on the **Eastern Metropolitan Bypass**, Avidipta blends nature with connectivity. Away from the grime and frenetic pace of the city, yet in close proximity to all the amenities and facilities of modern age living.

- ◆ Commercial hubs like Big Bazar, South City and Gariahat within 2km. Convenient shopping at the biggest outlets in south Kolkata
- ◆ Premier schools like Delhi Public School, The Heritage, South Point and Garden High within 2km. Quality education for your children
- ◆ Number of State-of-art Hospitals within 2km radius. Coping with emergency at all times
- ◆ Strategically located with excellent road and Metro Rail connectivity. Sahid Khudiram Metro Station is just 1Km. away



# Serene GREEN

Avidipta offers 9 acres of land space for sprawling greens - landscaped, manicured and well maintained. The landscape is laid out to create a lush, rich ambience - waterbody, treelined walkways jogging tracks, and quiet sitting zones. It has spaces for all age groups.

Take a leisurely walk, jog or just sit and relax -here nature awaits you, serene and tranquil.



# Zone of TRANQUILLITY

The layout seamlessly blends the requirements of human habitation with aesthetic ambience. It ensures optimum use of living space and free environment.

The position of each block allows maximum light and ventilation for each apartment. So on a winter morning bask in the warm sun streaming in. And in summer evenings enjoy the cool gentle breeze.



## Upmarket AMENITIES

At Avidipta facilities have been fashioned keeping in mind the finer nuances of life. A pool for refreshing swim, the hi-tech gym for daily workout, a club to relax - all these and more are a part of your address.

- ◆ A beautiful landscaped garden
- ◆ Concrete/paved internal roads with street light and plantation
- ◆ Swimming Pool and Baby Pool
- ◆ Well equipped Gymnasium
- ◆ Multipurpose Hall for community activities
- ◆ Children's Playpen
- ◆ Landscaped Jogging Track
- ◆ Fire Fighting Facilities
- ◆ Rain Water Harvesting system for car wash and gardening
- ◆ Solar Energy System for common area lighting

### ◆ Commercial Complex with Shopping Arcades

We also bring you thoughtful value additions to sweep away the mundane irritants of daily living.

- ◆ Garbage disposal from doorstep
- ◆ Elevators
- ◆ 24 x 7 Power back-up
- ◆ Water pump with generator backup
- ◆ Sewerage Treatment Plant
- ◆ Video Door Phone at each flat



# Blueprint of QUALITY LIVING

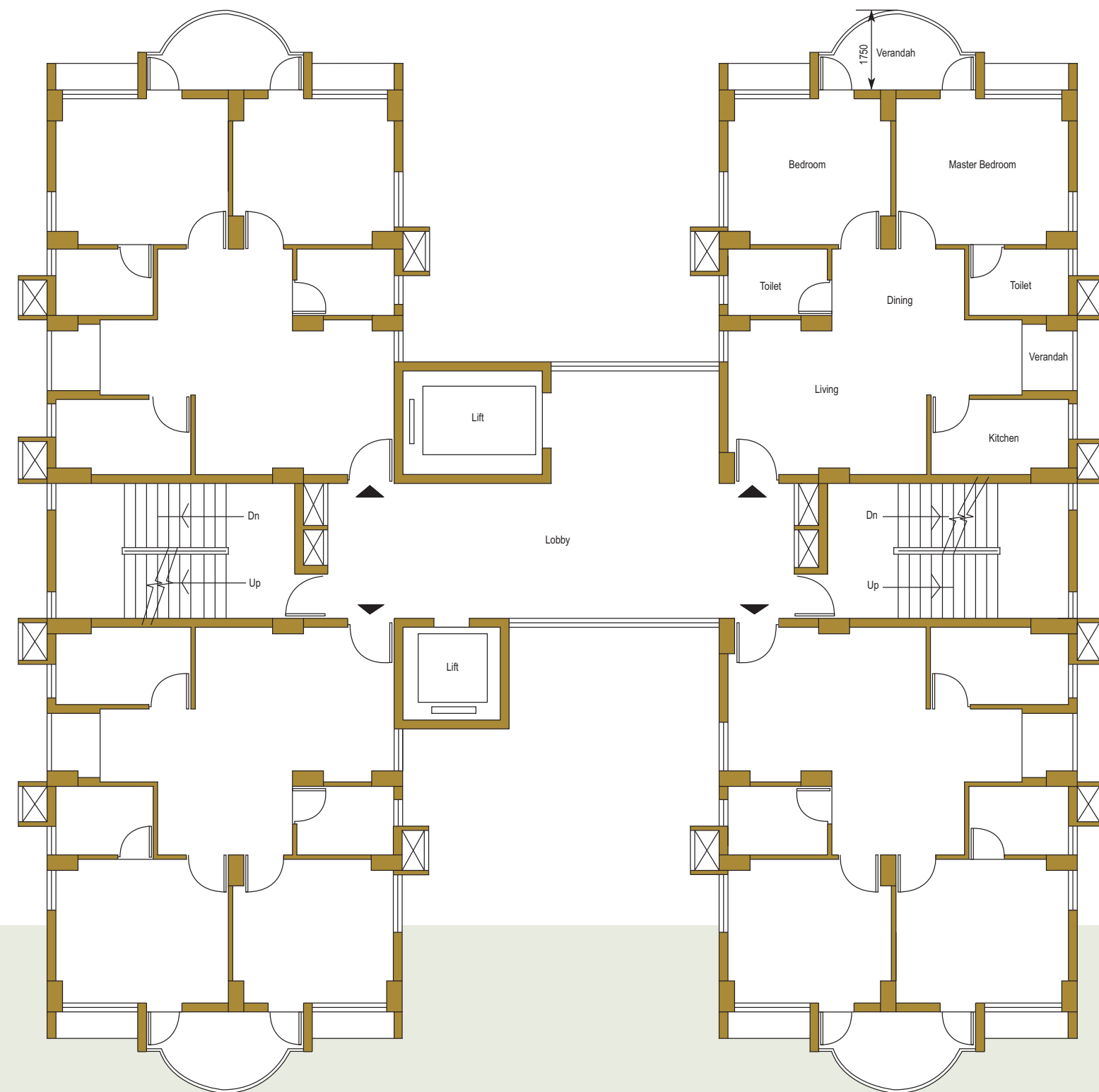
Designed to create an ambience of openness and tranquillity, the blueprint of Avidipta is a perfect balance of built architecture, natural surroundings and landscaped topography. It integrates functionality with aesthetics. Light, ventilation and architectural requirements are woven into the fabric of the design creating a milieu for harmonious living.

- Type A (LIG)
- Type B (MIG-I)
- Type C (MIG-II)
- Type D (HIG-I)
- Type E (HIG-II)
- Type F (HIG-III)
- Type G (HIG-IV)
- Type H (HIG-V)
- Type I (Senior Citizen)
- Services S
- Parking P



**Typical Floor Plan (1st to 17th Floor)**

No. of Flats Per Floor : 4  
 No. of Floors Per Building : G + 17  
 Area Per Flat : 99.31 Sq. m. (1069 Sq. ft.)



**Typical Floor Plan (1st to 17th Floor)**



**Flooring** : Master Bedroom - Laminated Wooden Flooring.  
 Others - Vitrified Tiles.  
 Kitchen & Toilets - Ceramic Tiles.  
**Windows** : Glazed aluminium sliding/openable windows.

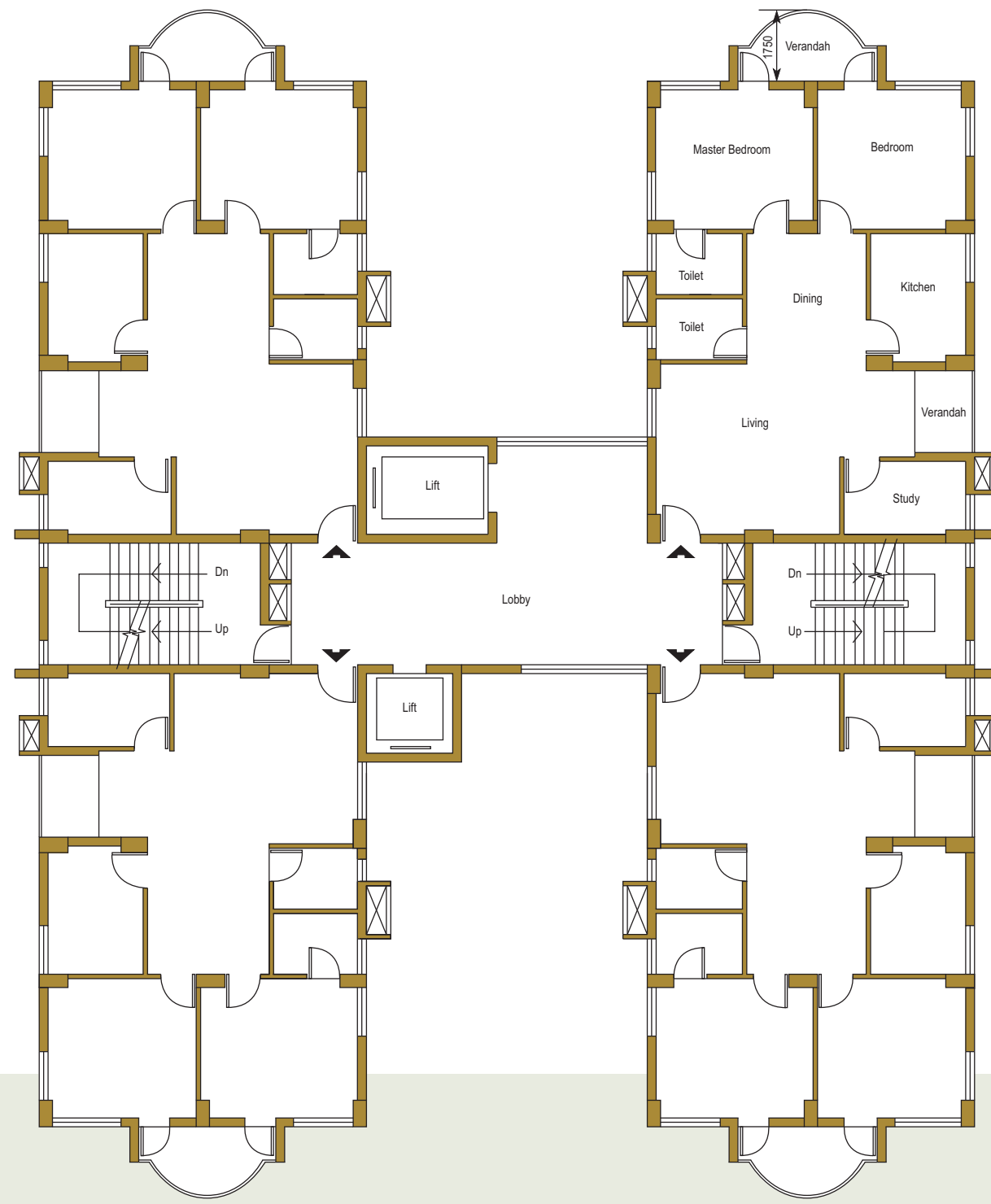
**Doors** : Verandah - Glazed Aluminium sliding door.  
 Entry - Flush door with teak veneer.  
 Toilet - Laminate finished PVC door.  
 Others - Commercial Flush door.  
**Kitchen Counter** : Granite with Stainless Steel sink.

**Sanitaryware** : Hindware or Parryware (white).  
**CP Fixtures** : Jaquar Continental or equivalent.  
**Dado** : Ceramic Tiles.  
**Special Ammnities** : Geyser at one toilet.

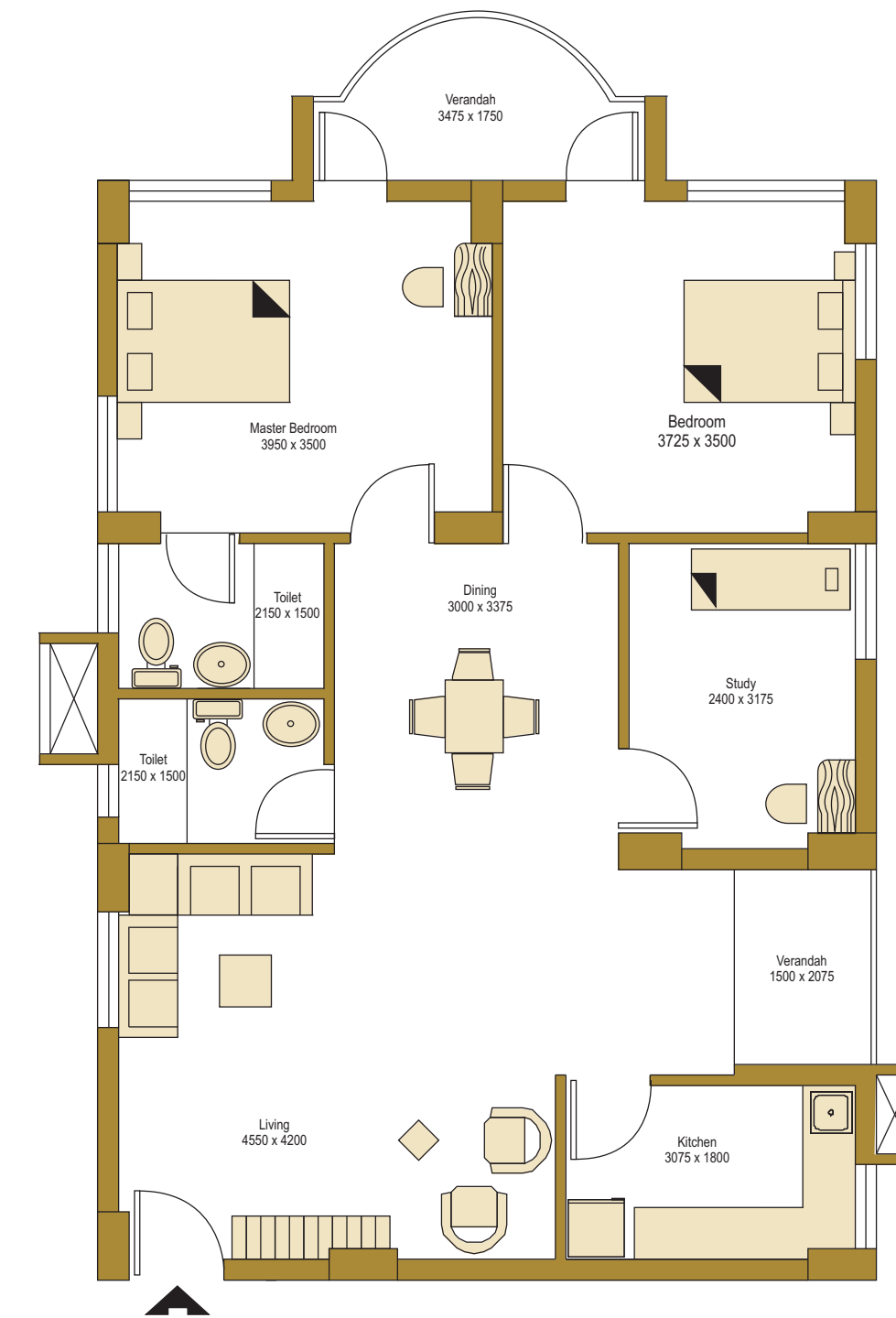


**Typical Floor Plan (2nd to 17th Floor)**

No. of Flats Per Floor : 4  
 No. of Floors Per Building : G + 17  
 Area Per Flat : 125.14 Sq. m. (1347 Sq. ft.)



**Typical Floor Plan (2nd to 17th Floor)**



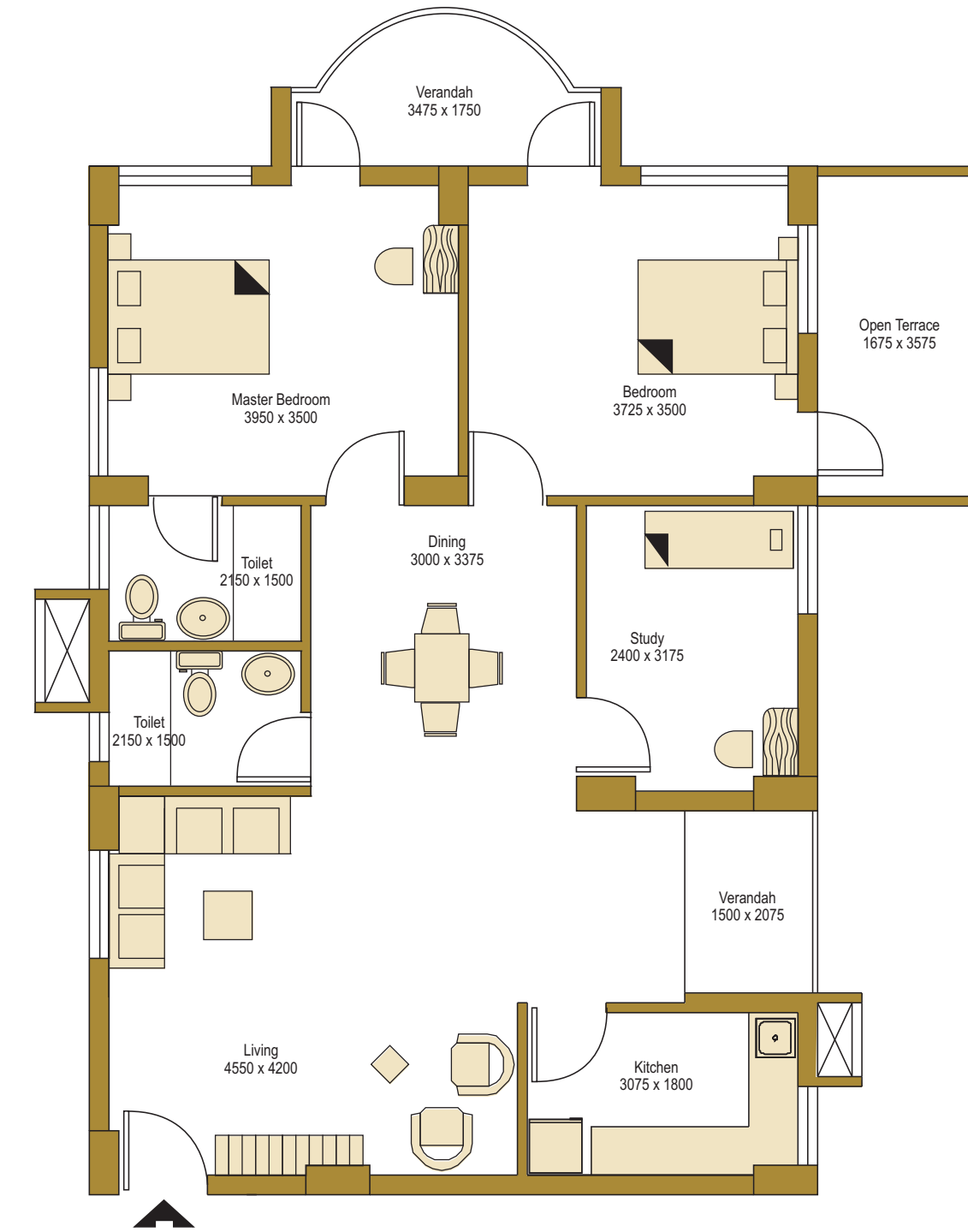
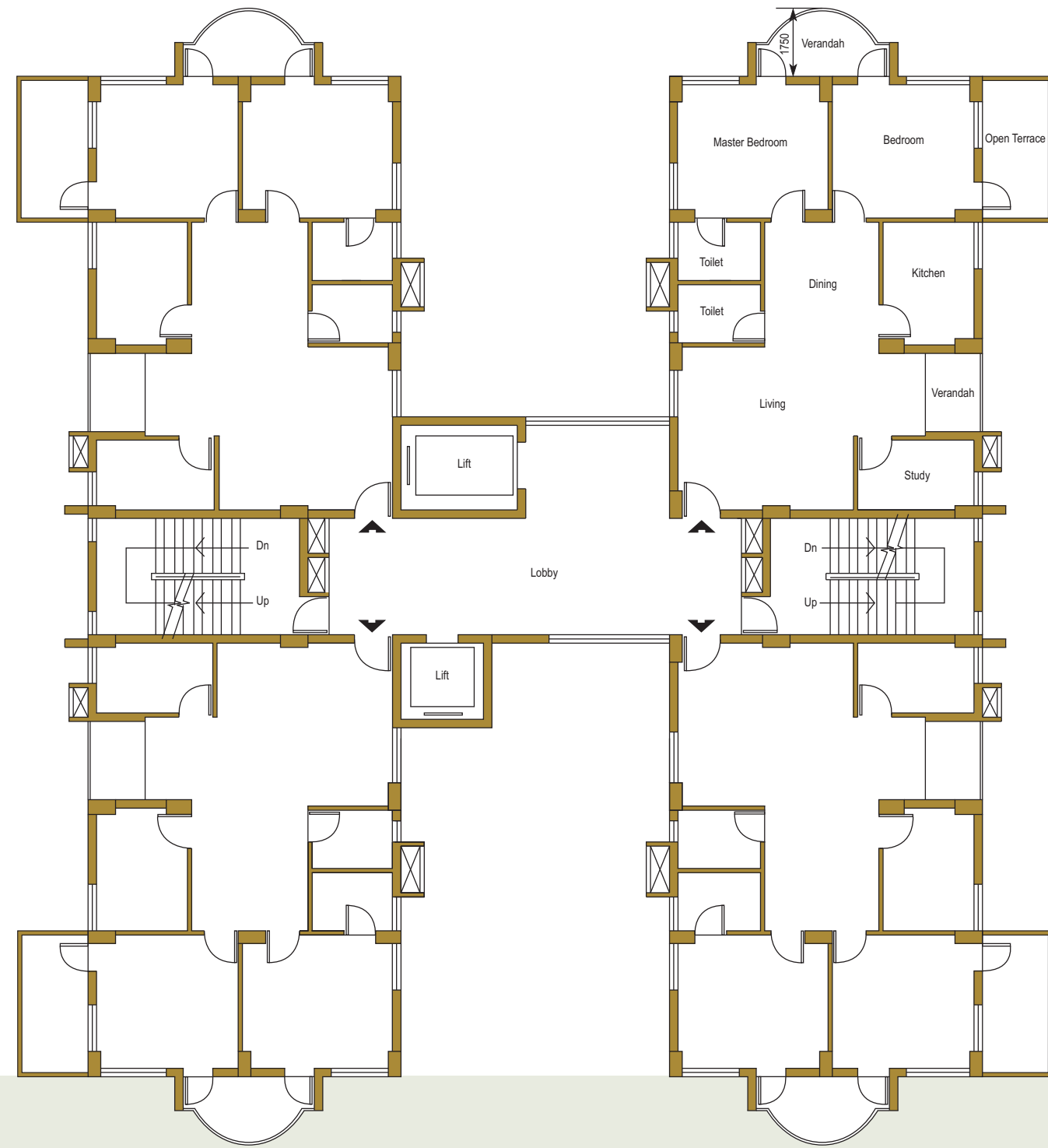
**Flooring** : Master Bedroom - Laminated Wooden Flooring.  
 Others - Vitrified Tiles  
 Kitchen & Toilets - Ceramic Tiles  
**Windows** : Glazed aluminium sliding/openable windows.

**Doors** : Verandah - Glazed Aluminium sliding door.  
 Entry & Other doors - Flush door with teak veneer.  
 Toilet - Laminate finished PVC door.  
**Kitchen Counter** : Granite with Stainless Steel sink.

**Sanitaryware** : Hindware or Parryware (white).  
**CP Fixtures** : Jaquar Continental or equivalent.  
**Dado** : Ceramic Tiles.  
**Special Ammnities** : Geyser at two toilets

**Floor Plan of 1st floor with open terrace**  
 Area of Terrace 6.87 Sq. m. (74 Sq. ft.)

**1st Floor Flat**



**Flooring** : Master Bedroom - Laminated Wooden Flooring.  
 Others - Vitrified Tiles  
 Kitchen & Toilets - Ceramic Tiles

**Windows** : Glazed aluminium sliding/openable windows.

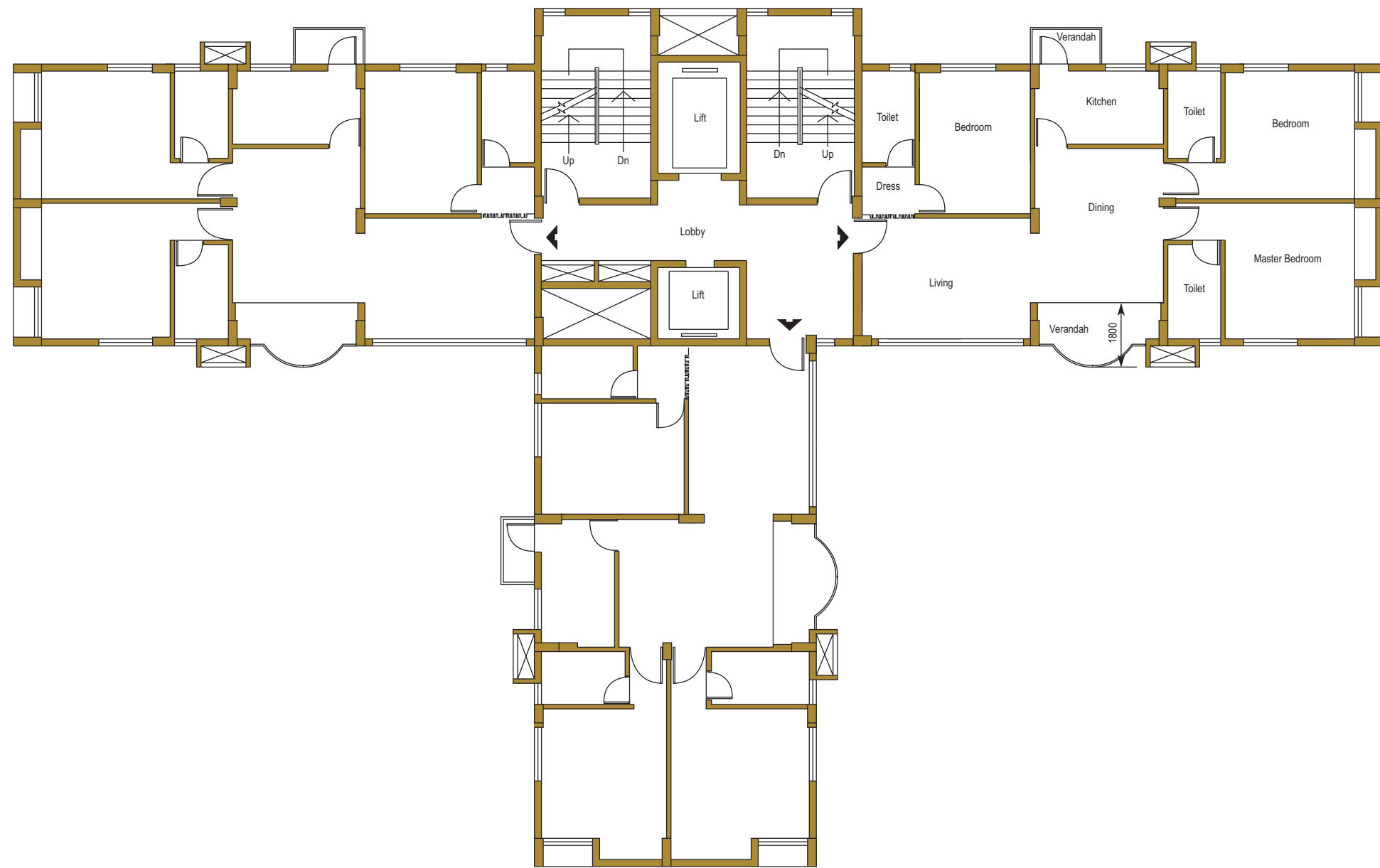
**Doors** : Verandah - Glazed Aluminium sliding door.  
 Entry & Other doors - Flush door with teak veneer.  
 Toilet - Laminate finished PVC door.

**Kitchen Counter** : Granite with Stainless Steel sink.

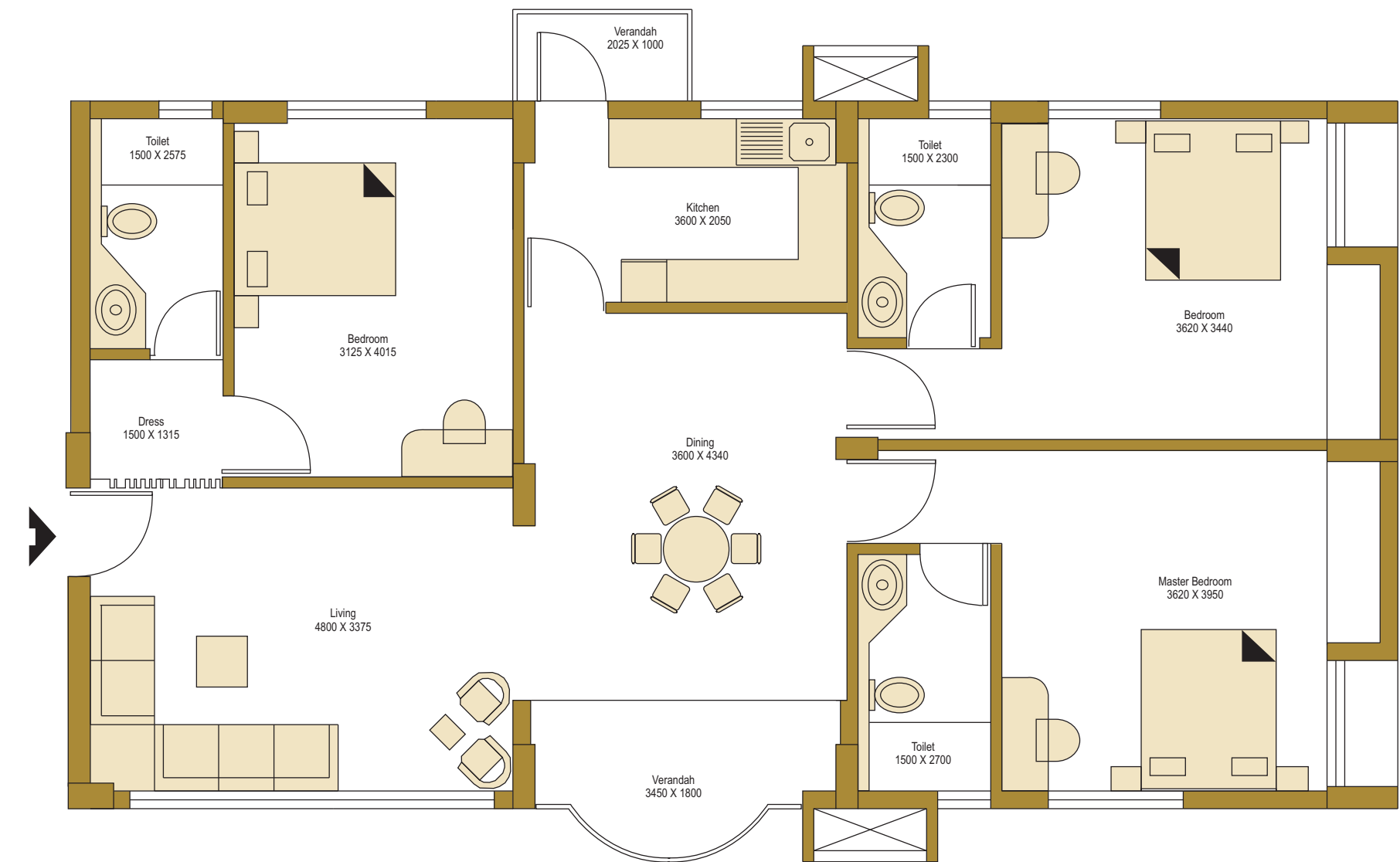
**Sanitaryware** : Hindware or Parryware (white).  
**CP Fixtures** : Jaquar Continental or equivalent.  
**Dado** : Ceramic Tiles.  
**Special Ammnities** : Geyser at two toilets

**Typical Floor Plan (2nd to 15th Floor)**

No. of Flats Per Floor : 3  
 No. of Floors Per Building : G + 16  
 Area Per Flat : 145.46 Sq. m. (1566 Sq. ft.)



**Typical Flat (2nd to 15th Floor)**



**Flooring** : Master Bedroom - Laminated Wooden Floor.  
 Others - Premium Quality Vitrified Tiles.

**Windows** : Coloured anodized special aluminium sliding/openable windows with tinted glass.

**Doors** : Entry door - Multilocking, anti theft steel powder coated door.  
 Verandah - Coloured anodized aluminium sliding door with tinted glass.  
 Other rooms - Flush door with teak veneer.  
 Toilet - FRP door.

**Kitchen Counter** : Granite with Stainless Steel sink.

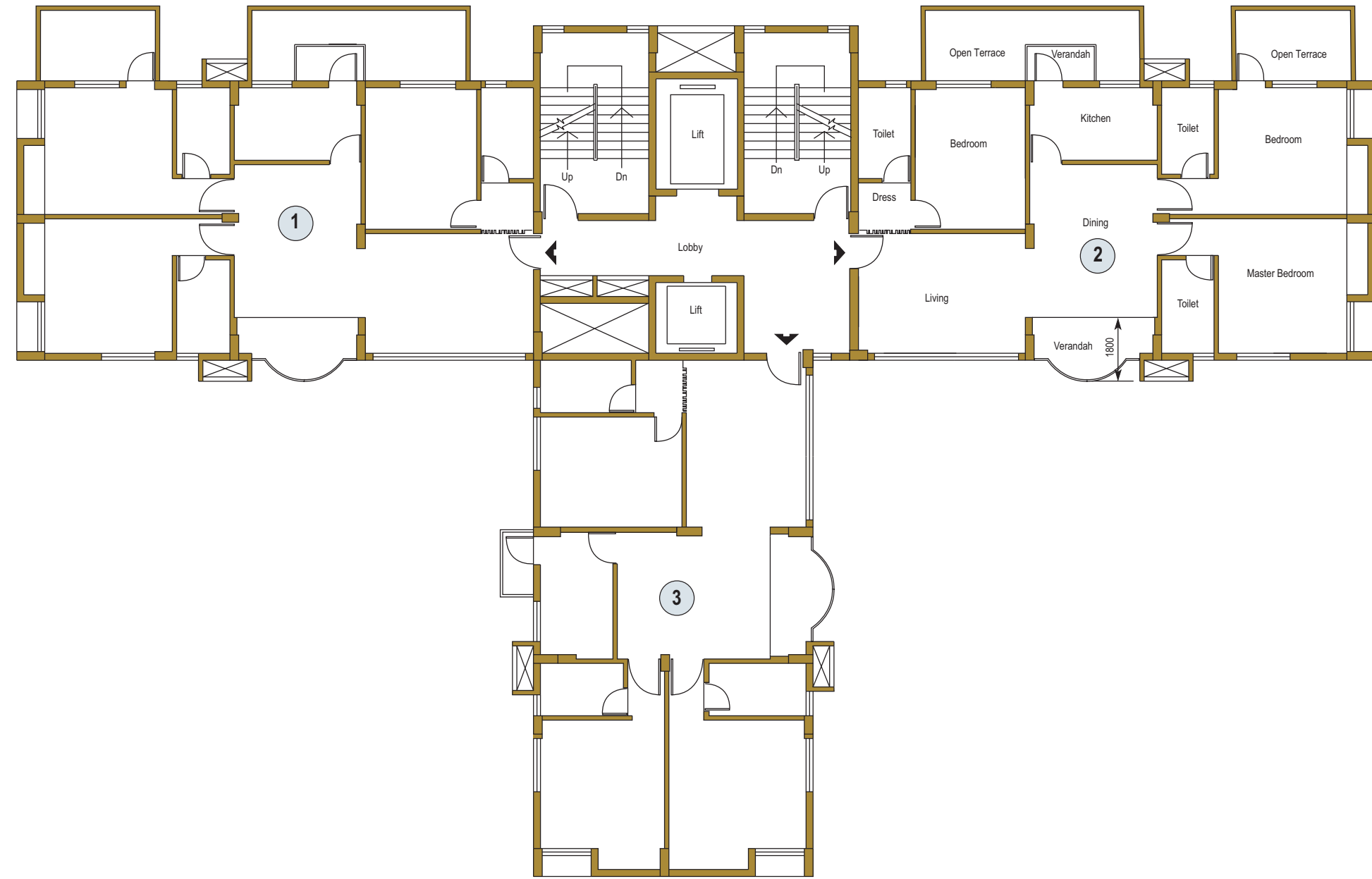
**Sanitaryware** : Kohlar or Roca (white).

**CP Fixtures** : Jaquar Solo-E or equivalent.

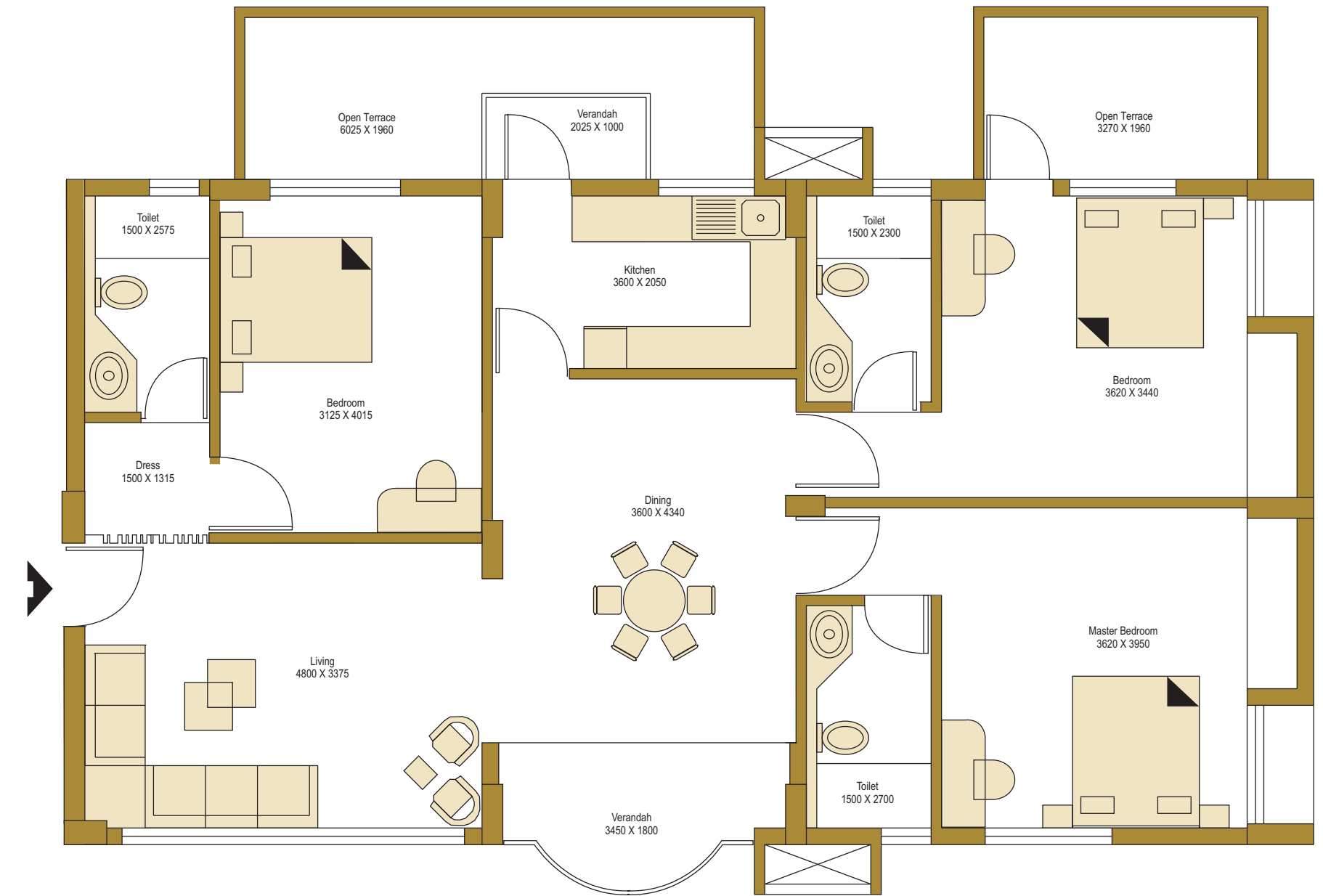
**Dado** : Ceramic Tiles

**Special Ammnities** : a) Geyser at two toilets.  
 b) Shower Cubicle in one toilet.  
 c) Split air-conditioner in Master Bedroom.

**Floor Plan of 1st floor with open terrace**  
 Area of Terrace of Flat 1& 2 = 18.39 Sq. m. (198 Sq. ft.) each



**1st Floor Flat with open terrace**



**Flooring** : Master Bedroom - Laminated Wooden Floor.  
 Others - Premium Quality Vitrified Tiles.

**Windows** : Coloured anodized special aluminium sliding/openable windows with tinted glass.

**Doors** : Entry door - Multilocking, anti theft steel powder coated door.  
 Verandah - Coloured anodized aluminium sliding door with tinted glass.  
 Other rooms - Flush door with teak veneer.  
 Toilet - FRP door.

**Kitchen Counter** : Granite with Stainless Steel sink.

**Sanitaryware** : Kohlar or Roca (white).

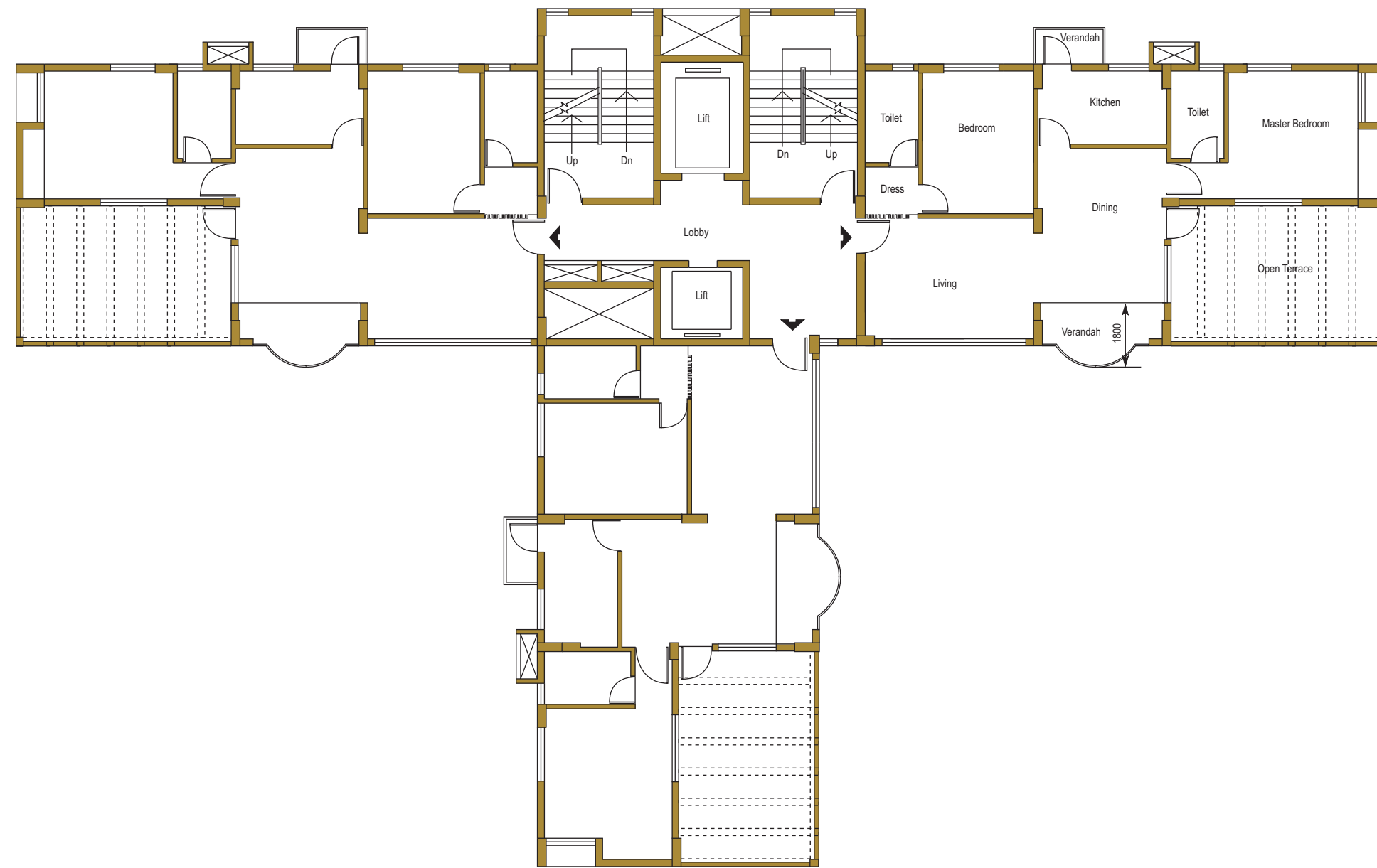
**CP Fixtures** : Jaquar Solo-E or equivalent.

**Dado** : Ceramic Tiles

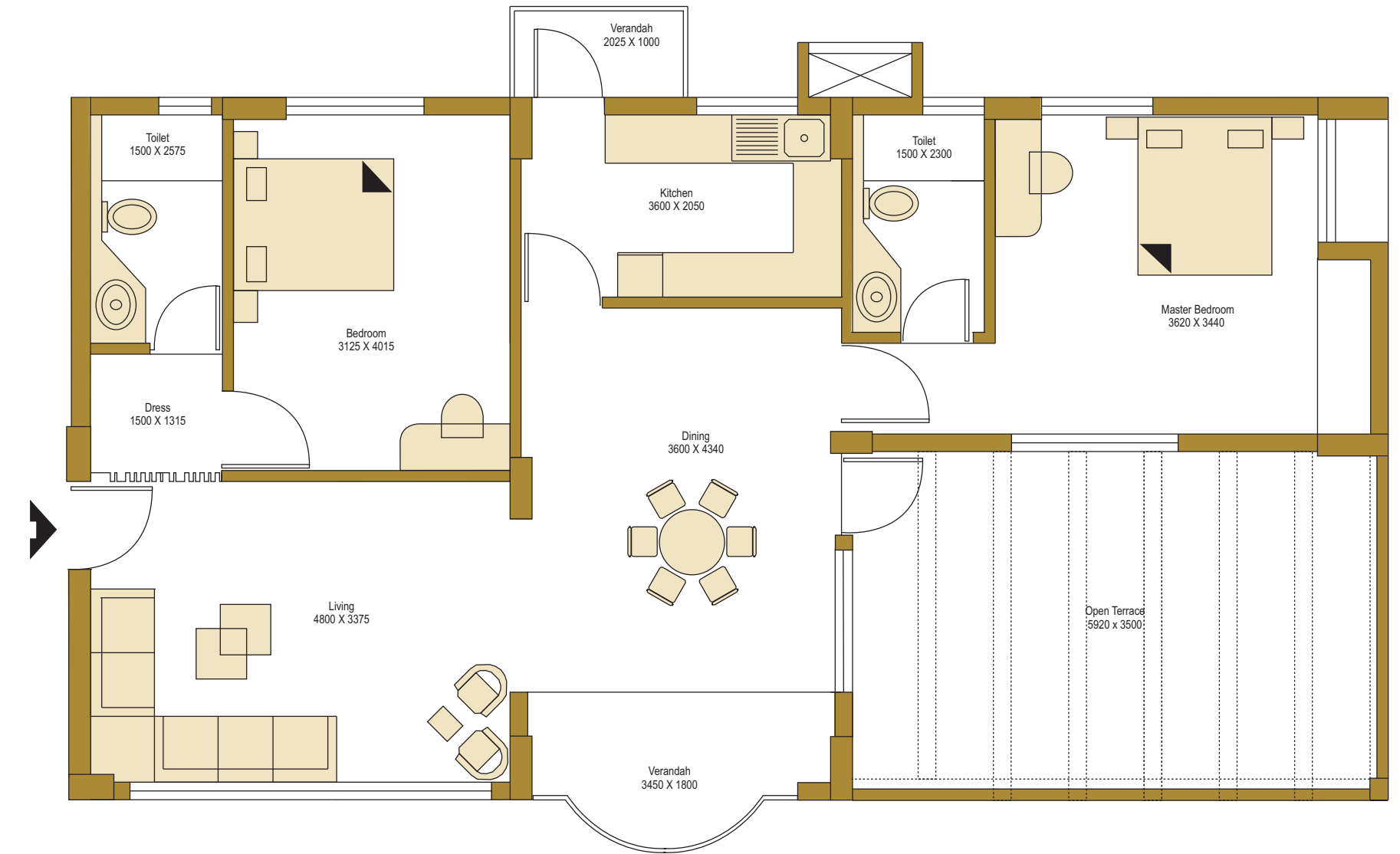
**Special Ammnities** : a) Geyser at two toilets.  
 b) Shower Cubicle in one toilet.  
 c) Split air-conditioner in Master Bedroom.

### 16th Floor Plan

Area Per Flat : 123.62 Sqm. (1331 Sq. ft.)  
 Area Per Open Terrace : 21.79 Sqm. (235 Sq. ft.)



### 16th Floor Flat with open terrace



**Flooring** : Master Bedroom - Laminated Wooden Floor.  
 Others - Premium Quality Vitrified Tiles.

**Windows** : Coloured anodized special aluminium sliding/openable windows with tinted glass.

**Doors** : Entry door - Multilocking, anti theft steel powder coated door.  
 Verandah - Coloured anodized aluminium sliding door with tinted glass.  
 Other rooms - Flush door with teak veneer.  
 Toilet & Terrace - FRP door.

**Kitchen Counter** : Granite with Stainless Steel sink.

**Sanitaryware** : Kohlar or Roca (white).

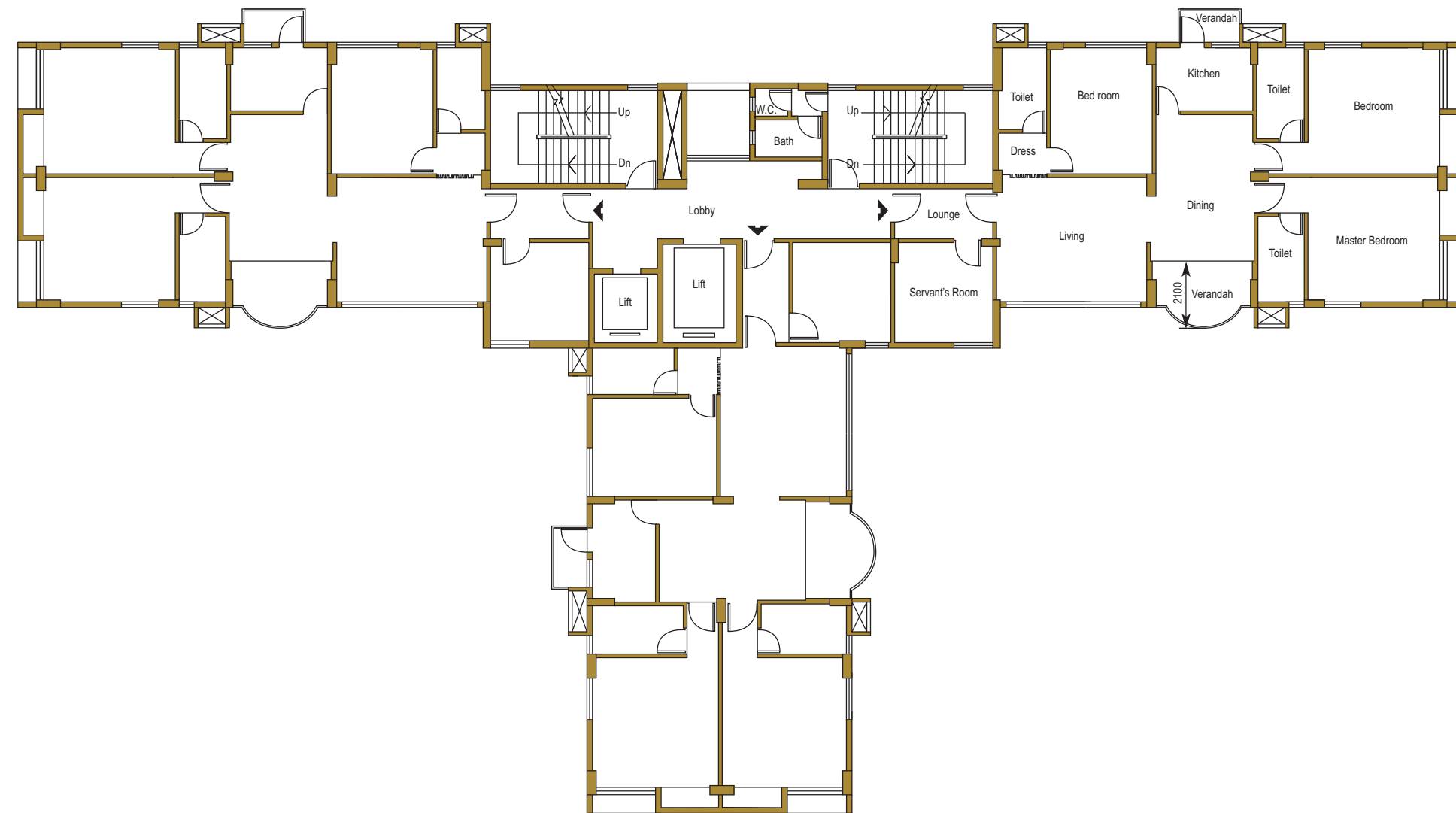
**CP Fixtures** : Jaquar Solo-E or equivalent.

**Dado** : Ceramic Tiles

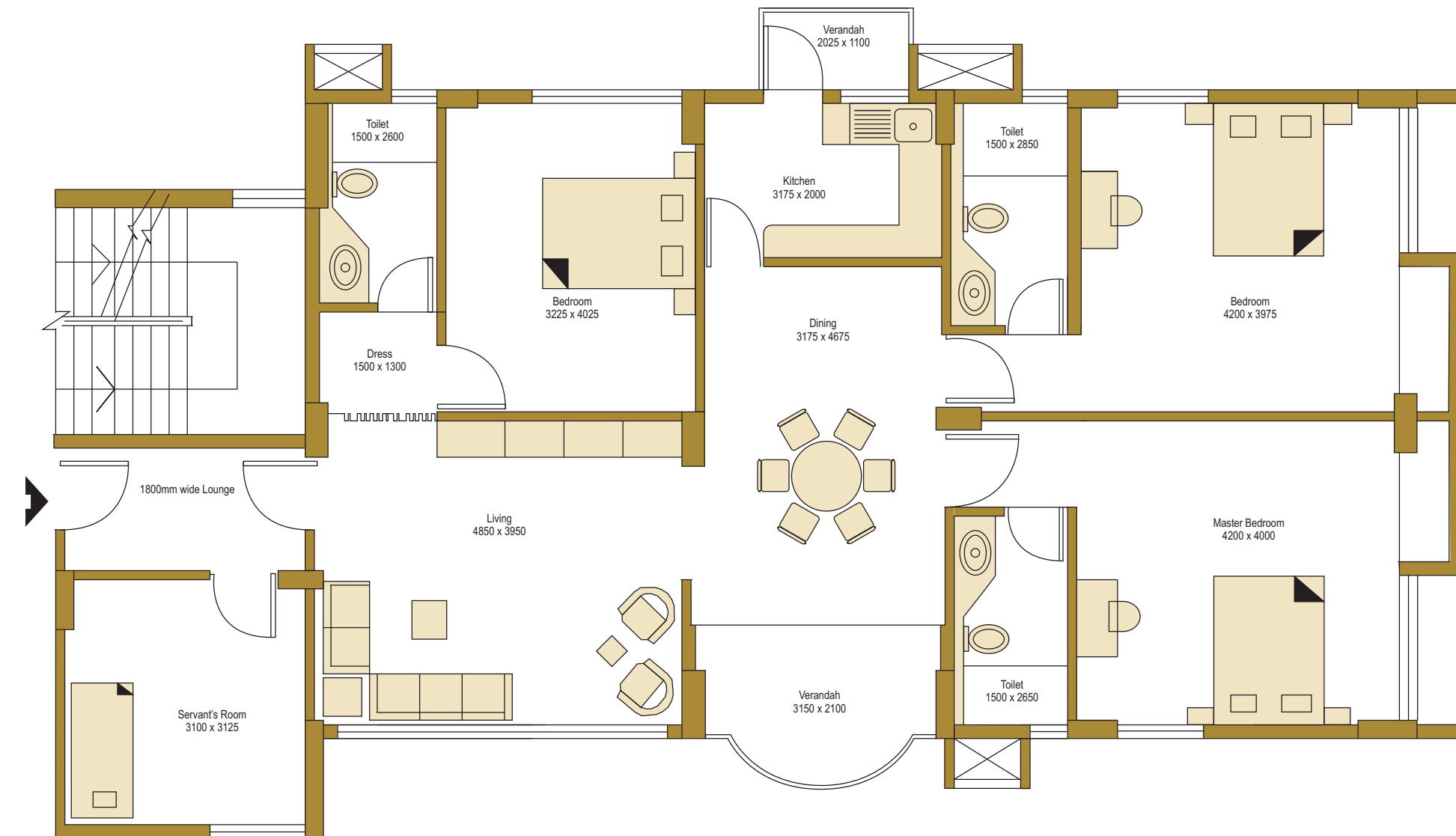
**Special Ammnities** : a) Geyser at two toilets.  
 b) Shower Cubicle in one toilet.  
 c) Split air-conditioner in Master Bedroom.

**Typical Floor Plan (2nd to 16th Floor)**

No. of Flats Per Floor : 3  
 No. of Floors Per Building : G + 17  
 Area Per Flat : 176.14 Sqm. (1896 Sq. ft.)



**Typical Flat (2nd to 16th Floor)**



**Flooring** : Living Dining - Italian Marble.  
 Master Bedroom - Wooden Floor.  
 Others - Premium Quality Vitrified Tiles.  
 Servant's Room - Ceramic Tiles.

**Windows** : Coloured anodized special aluminium sliding/openable windows with tinted glass.

**Doors** : Entry door - Multilocking, anti theft steel powder coated door.  
 Verandah - Coloured anodized aluminium sliding door with tinted glass.  
 Other rooms - Flush door with teak veneer.  
 Toilet - FRP door.

**Kitchen Counter** : Granite with Stainless Steel sink.

**Sanitaryware** : Kohlar or Roca (white).

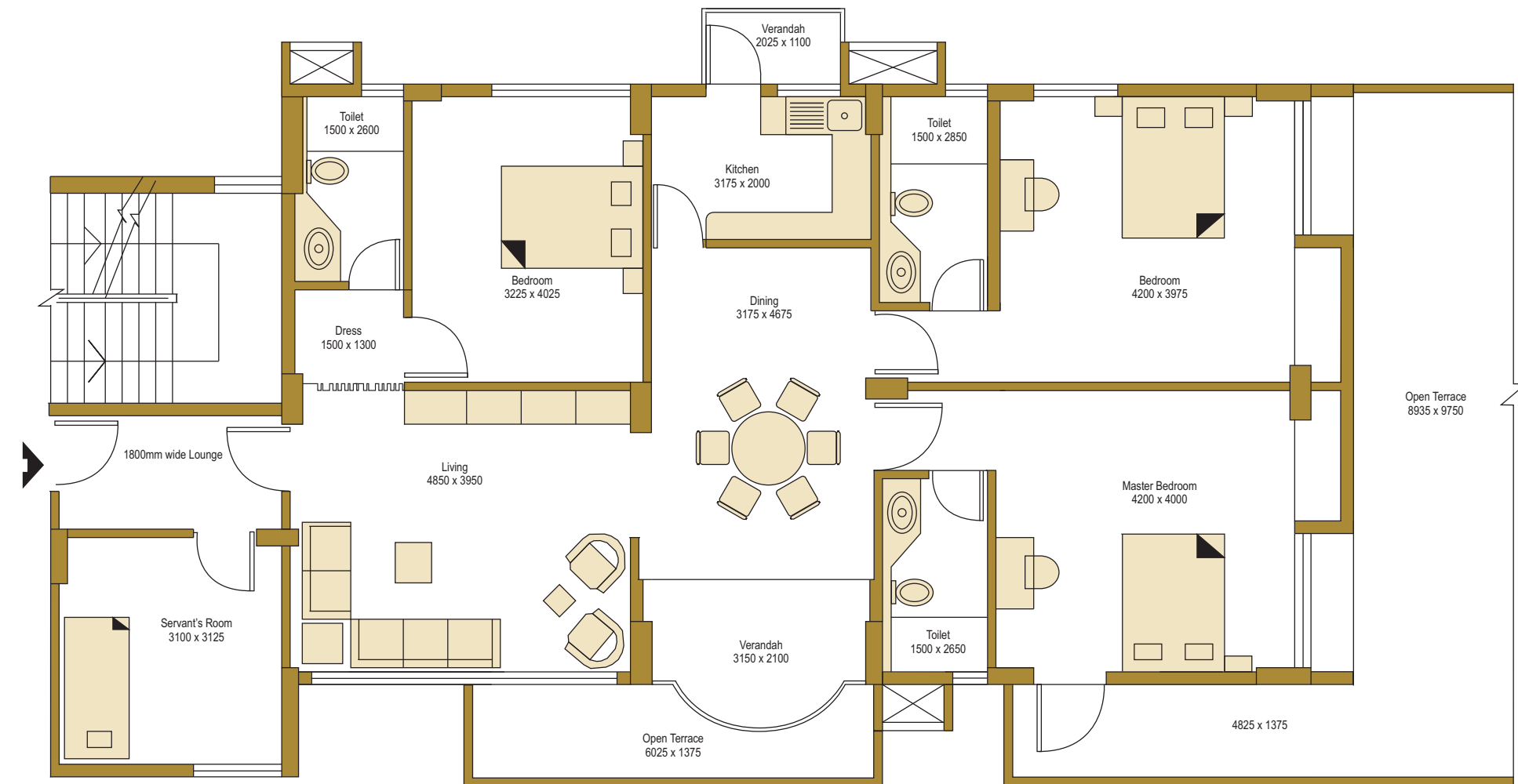
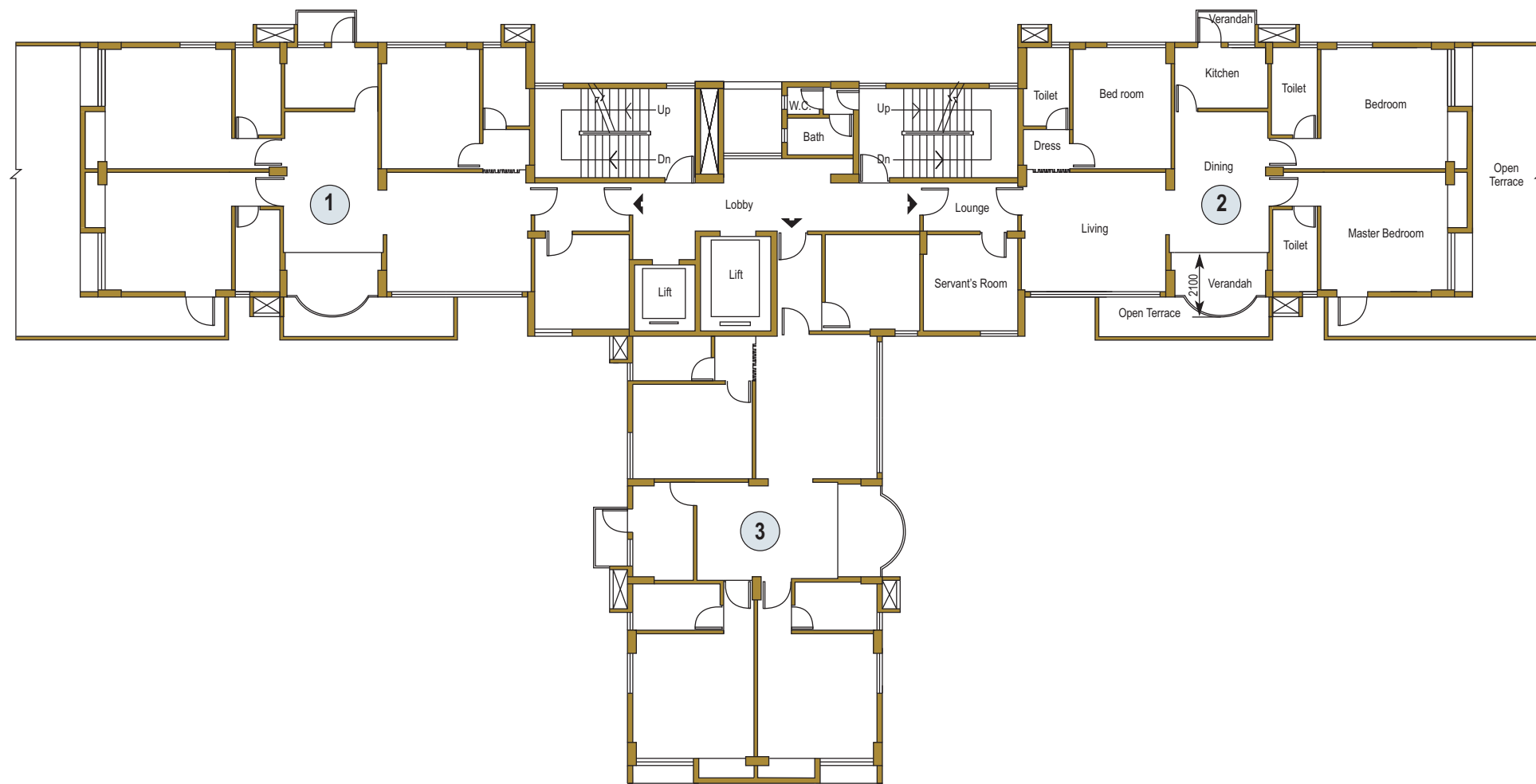
**CP Fixtures** : Jaquar Florentine or equivalent

**Dado** : Vitrified Tiles

**Special Ammnities** : a) Geyser at three toilets  
 b) Shower cubicle in two toilets.  
 c) Split air-conditioner in two bedrooms.

**Floor Plan of 1st floor with open terrace**  
 Area of Terrace at 1st Floor of Flat 1 & 2 = 105.72 Sq. m. (1138 Sq. ft.)

**1st Floor Flat with open terrace**



**Flooring :** Living Dining - Italian Marble.  
 Master Bedroom - Wooden Floor.  
 Others - Premium Quality Vitrified Tiles.  
 Servant's Room - Ceramic Tiles.

**Windows :** Coloured anodized special aluminium sliding/openable windows with tinted glass.

**Doors :** Entry door - Multilocking, anti theft steel powder coated door.  
 Verandah - Coloured anodized aluminium sliding door with tinted glass.  
 Other rooms - Flush door with teak veneer.  
 Toilet - FRP door.

**Kitchen Counter :** Granite with Stainless Steel sink.

**Sanitaryware :** Kohlar or Roca (white).

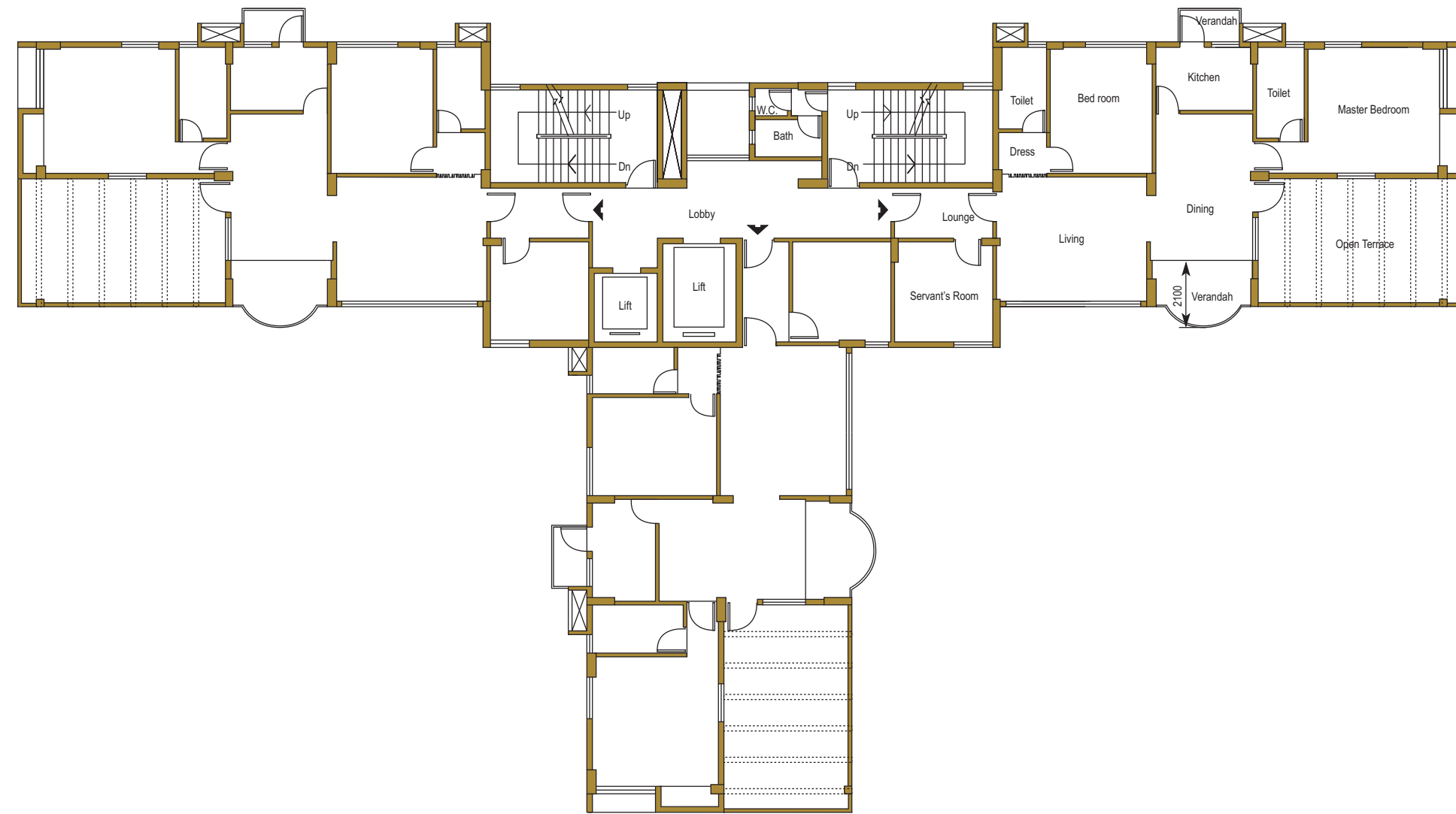
**CP Fixtures :** Jaquar Florentine or equivalent

**Dado :** Vitrified Tiles

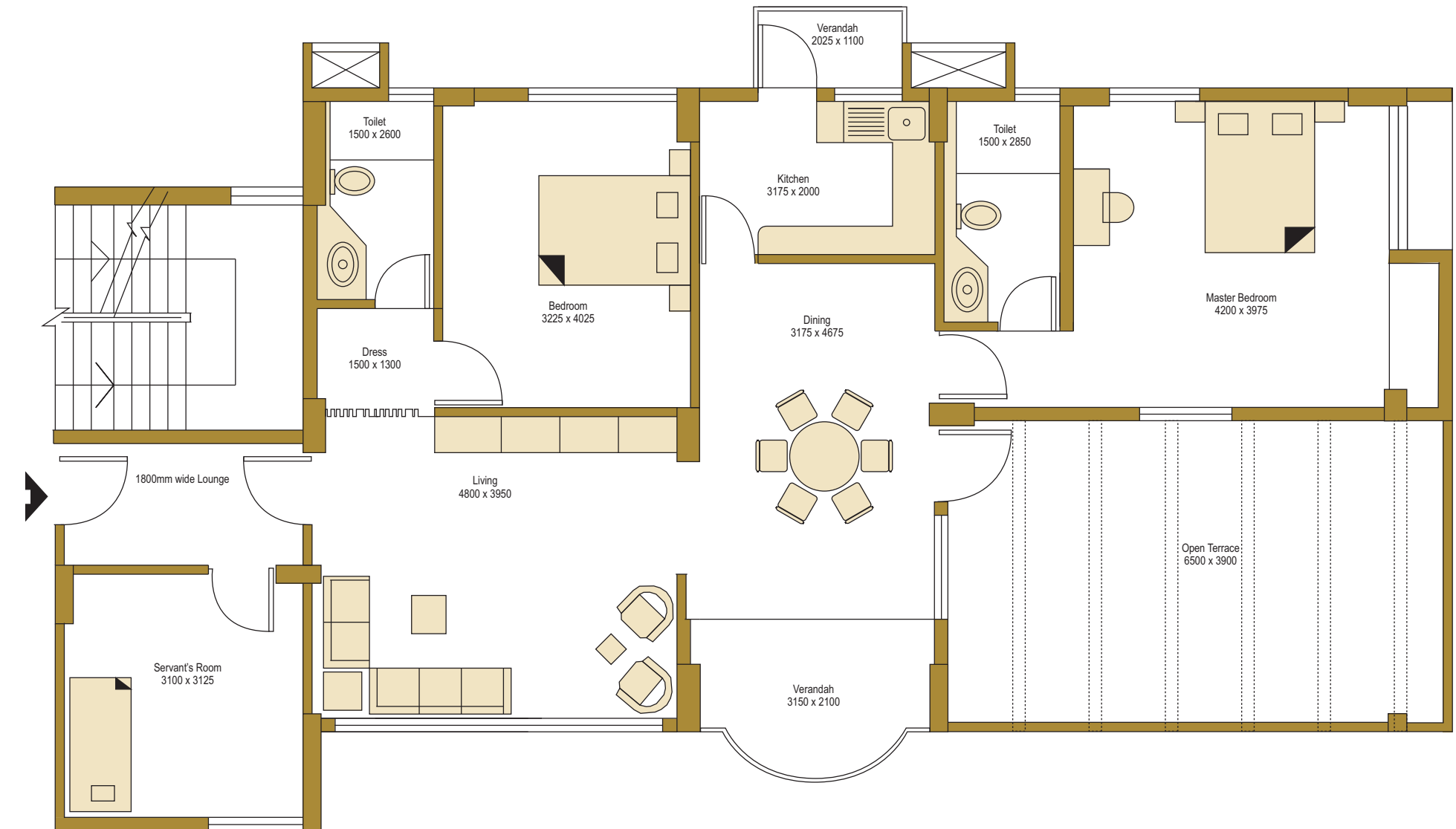
**Special Ammnities :** a) Geyser at three toilets  
 b) Shower cubicle in two toilets.  
 c) Split air-conditioner in two bedrooms.

### 17th Floor Plan

Area Per Flat : 149.75 Sqm. (1612 Sq. ft.)  
 Area Per Open Terrace : 26.62 Sqm. (287 Sq. ft.)



### 17th Floor Flat with open terrace



**Flooring** : Living Dining - Italian Marble.  
 Master Bedroom - Wooden Floor.  
 Others - Premium Quality Vitrified Tiles.  
 Servant's Room - Ceramic Tiles.

**Windows** : Coloured anodized special aluminium sliding/openable windows with tinted glass.

**Doors** : Entry door - Multilocking, anti theft steel powder coated door.  
 Verandah - Coloured anodized aluminium sliding door with tinted glass.  
 Other rooms - Flush door with teak veneer.  
 Toilet & Terrace - FRP door.

**Kitchen Counter** : Granite with Stainless Steel sink.

**Sanitaryware** : Kohler or Roca (white).

**CP Fixtures** : Jaquar Florentine or equivalent

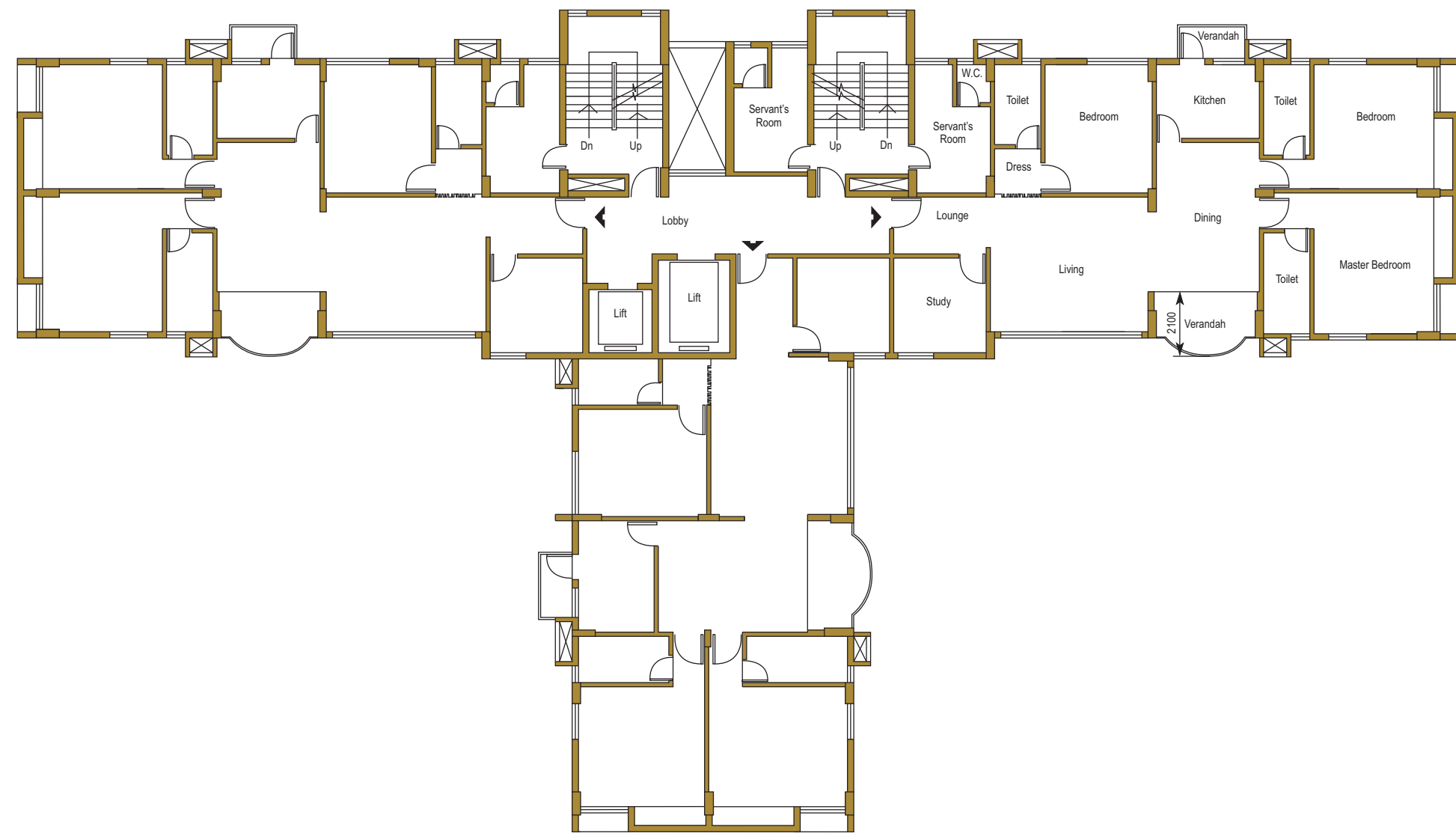
**Dado** : Vitrified Tiles

**Special Ammnities** : a) Geyser at two toilets  
 b) Shower cubicle in two toilets.  
 c) Split air-conditioner in two bedrooms.

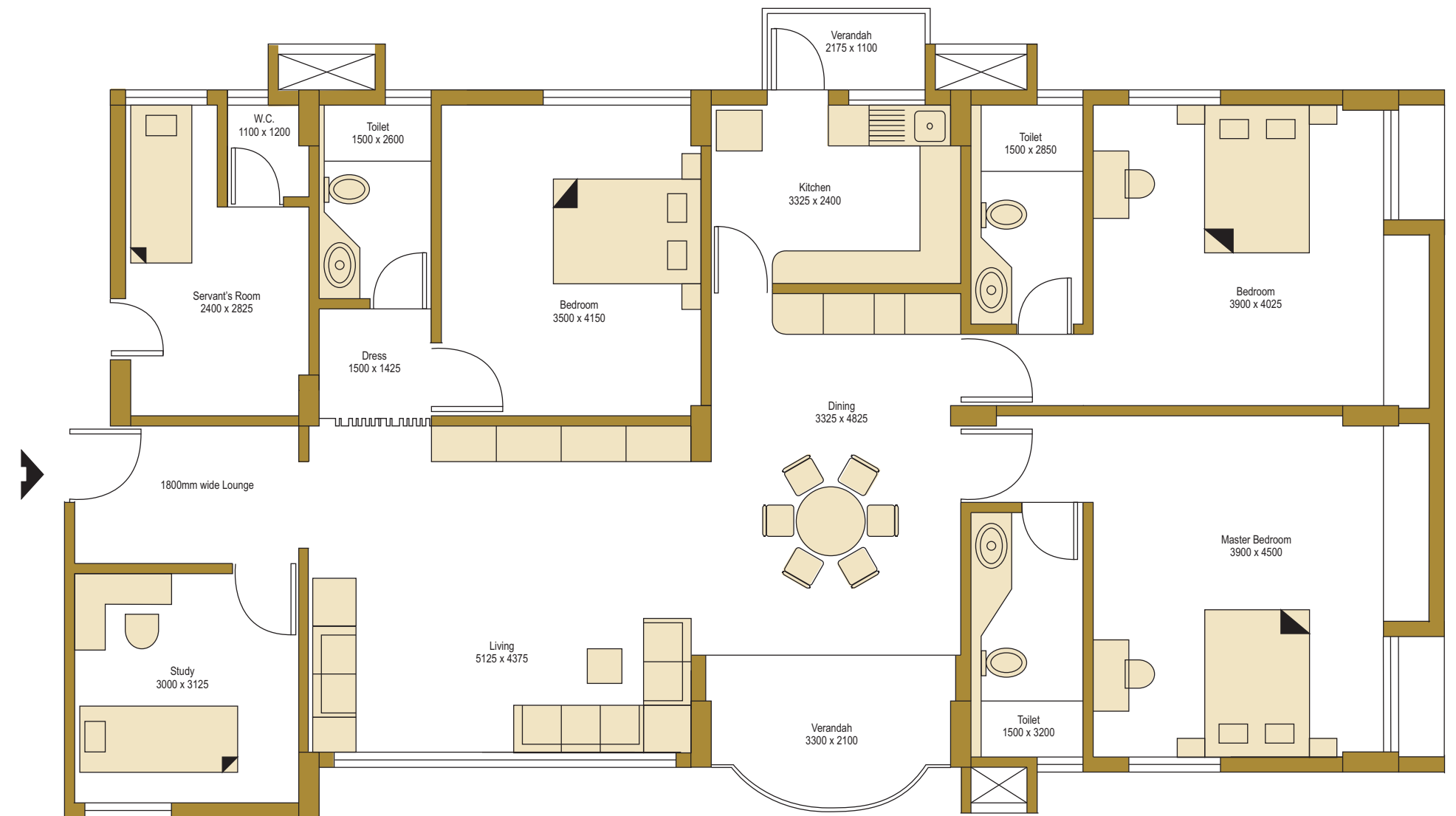


**Typical Floor Plan (2nd to 17th Floor)**

No. of Flats Per Floor : 3  
 No. of Floors Per Building : G + 18  
 Area Per Flat : 192.69 Sqm. (2074 Sq. ft.)



**Typical Flat (2nd to 17th Floor)**



**Flooring :** Living Dining - Italian Marble.  
 Master Bedroom - Wooden Floor.  
 Others - Premium Quality Vitrified Tiles.  
 Servant's Room - Ceramic Tiles.

**Windows :** Coloured anodized special aluminium sliding/openable windows with tinted glass.

**Doors :** Entry door - Multilocking, anti theft steel powder coated door.  
 Verandah - Coloured anodized aluminium sliding door with tinted glass.  
 Other rooms - Flush door with teak veneer.  
 Toilet - FRP door.

**Kitchen Counter :** Granite with Stainless Steel sink.

**Sanitaryware :** Kohlar or Roca (white).  
 Servant's Toilet - Hindware/Parryware (whit).

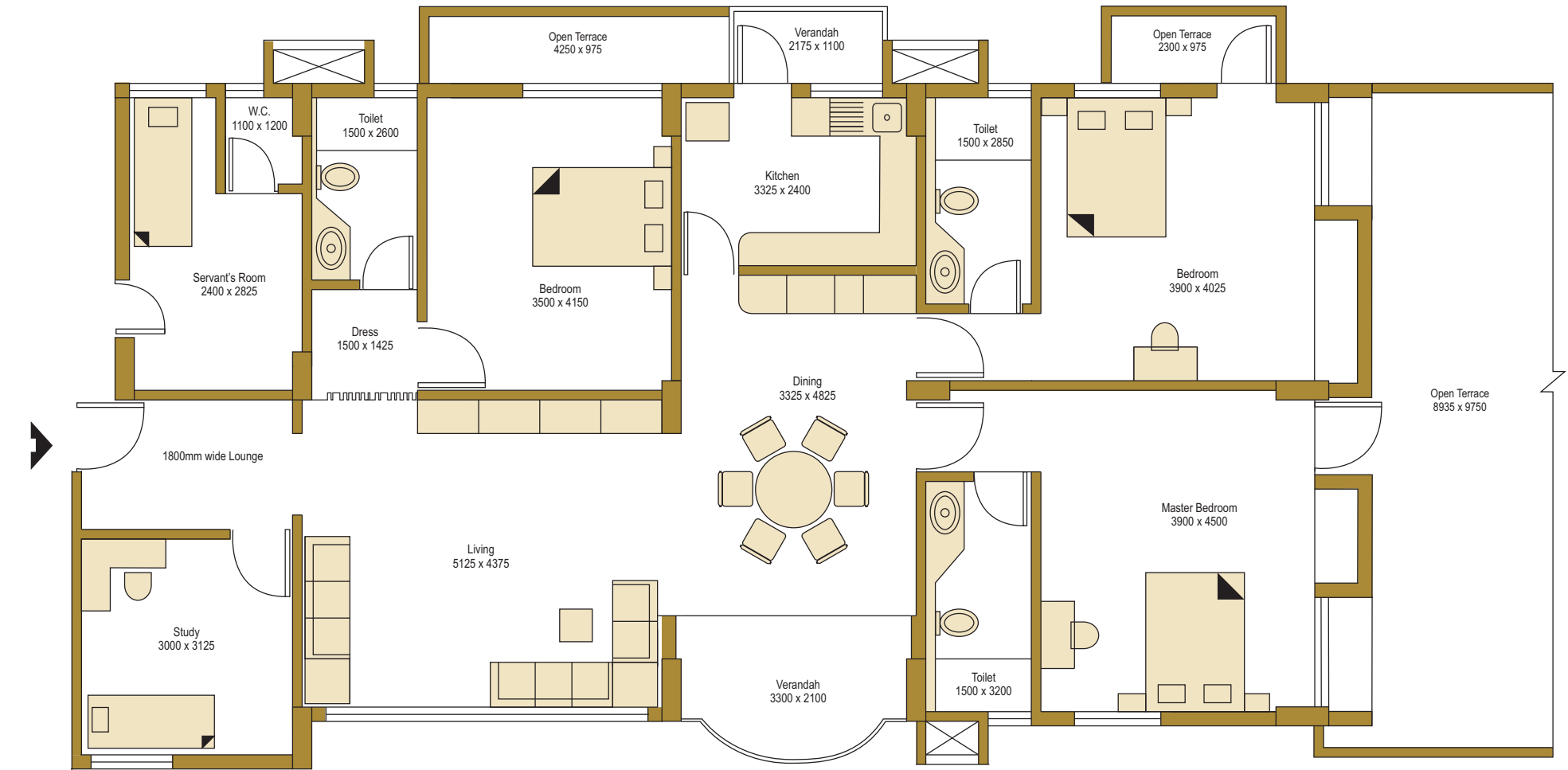
**CP Fixtures :** Jaquar Florentine or equivalent.  
 Servant's Toilet - Essco or equivalent.

**Dado :** Vitrified Tiles

**Special Ammnities :** a) Geyser at three toilets  
 b) Shower cubicle in three toilets.  
 c) Split air-conditioner in three bedrooms.

**Floor Plan of 1st floor with open terrace**  
 Area of Terrace of Flat 1 = 7.62 Sq. m. (82 Sq. ft.)  
 Area of Terrace of Flat 2 = 97.64 Sq. m. (1051 Sq. ft.)

**1st Floor Flat with open terrace**



**Flooring :** Living Dining - Italian Marble.  
 Master Bedroom - Wooden Floor.  
 Others - Premium Quality Vitrified Tiles.  
 Servant's Room - Ceramic Tiles.

**Windows :** Coloured anodized special aluminium sliding/openable windows with tinted glass.

**Doors :** Entry door - Multilocking, anti theft steel powder coated door.  
 Verandah - Coloured anodized aluminium sliding door with tinted glass.  
 Other rooms - Flush door with teak veneer.  
 Toilet - FRP door.

**Kitchen Counter :** Granite with Stainless Steel sink.

**Sanitaryware :** Kohlar or Roca (white).  
 Servant's Toilet - Hindware/Parryware (whit).

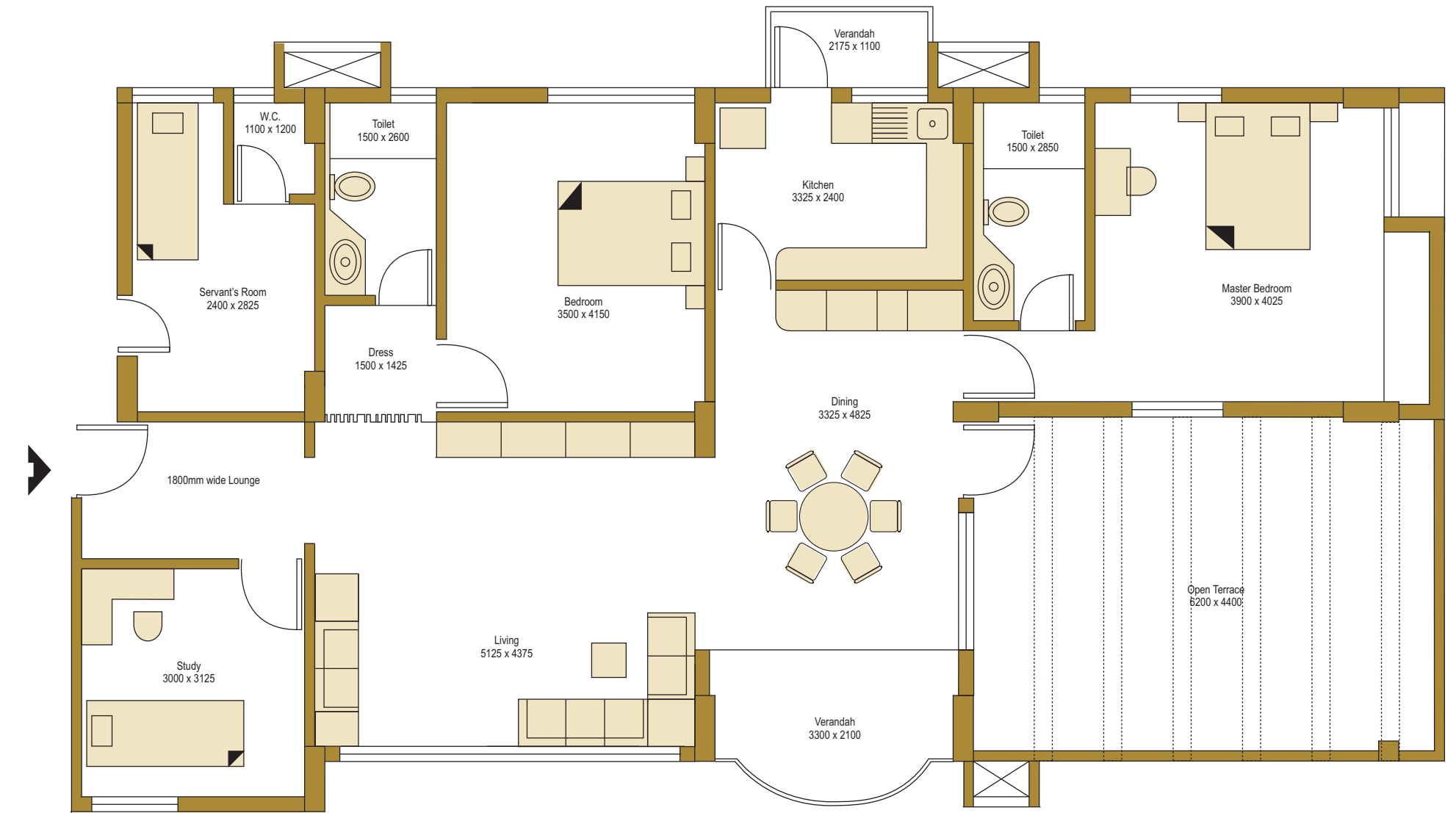
**CP Fixtures :** Jaquar Florentine or equivalent.  
 Servant's Toilet - Essco or equivalent.

**Dado :** Vitrified Tiles

**Special Ammnities :** a) Geysers at three toilets  
 b) Shower cubicle in three toilets.  
 c) Split air-conditioner in three bedrooms.

**18th Floor Plan**  
 Area Per Flat : 164.72 Sqm. (1773 Sq. ft.)  
 Area Per Open Terrace : 28.62 Sq. m. (308 Sq. ft.)

**18th Floor Flat with open terrace**



**Flooring :** Living Dining - Italian Marble.  
 Master Bedroom - Wooden Floor.  
 Others - Premium Quality Vitrified Tiles.  
 Servant's Room - Ceramic Tiles.

**Windows :** Coloured anodized special aluminium sliding/openable windows with tinted glass.

**Doors :** Entry door - Multilocking, anti theft steel powder coated door.  
 Verandah - Coloured anodized aluminium sliding door with tinted glass.  
 Other rooms - Flush door with teak veneer.  
 Toilet & Terrace - FRP door.

**Kitchen Counter :** Granite with Stainless Steel sink.

**Sanitaryware :** Kohlar or Roca (white).  
 Servant's Toilet - Hindware/Parryware (whit).

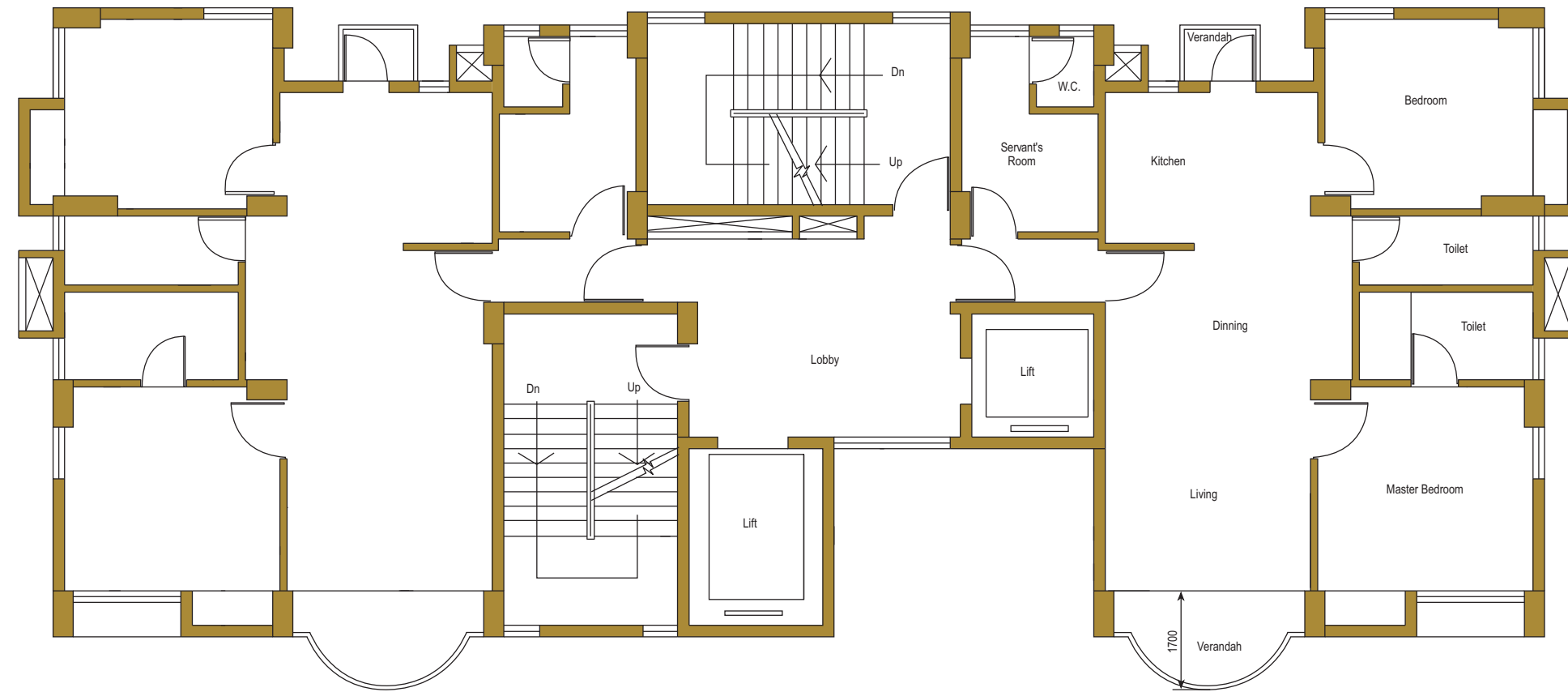
**CP Fixtures :** Jaquar Florentine or equivalent.  
 Servant's Toilet - Essco or equivalent.

**Dado :** Vitrified Tiles

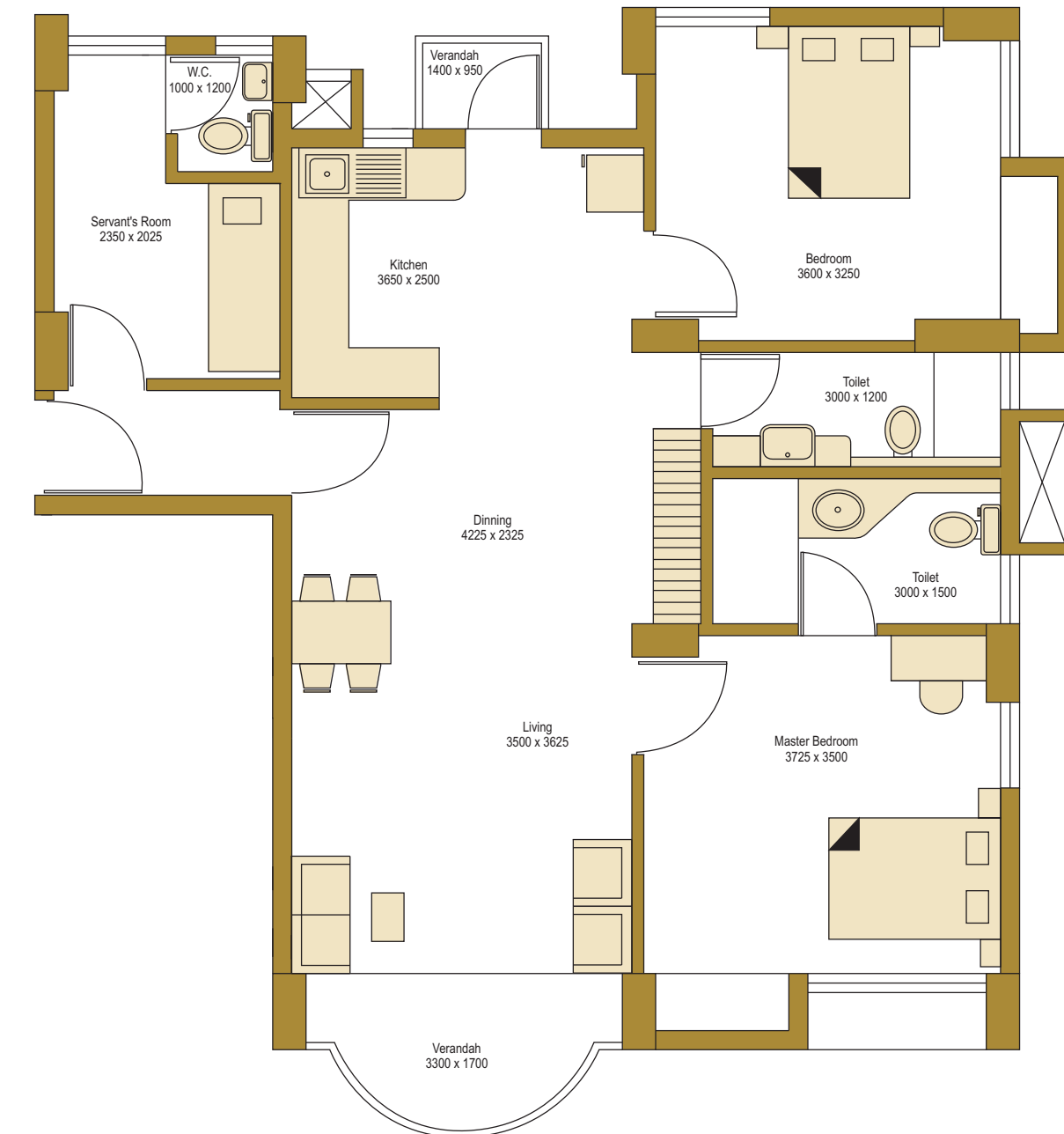
**Special Ammnities :** a) Geyser at two toilets  
 b) Shower cubicle in two toilets.  
 c) Split air-conditioner in two bedrooms.

**Typical Floor Plan (1st to 16th Floor)**

No. of Flats Per Floor : 2  
 No. of Floors Per Building : G + 16  
 Area Per Flat : 127.60 Sqm. (1373 Sq. ft.)



**Typical Flat (1st to 16th Floor)**



**Flooring** : Master Bedroom - Laminated Wood Flooring.  
 Others - Vitrefied Tiles.  
 Kitchen & Toilets - Ceramic Tiles.  
 Servant's Room - Ceramic Tiles.  
**Windows** : Glazed aluminium sliding/openable windows.

**Doors** : Verandah - Aluminium sliding door.  
 Entry - Flush door with teak veneer.  
 Toilet - Laminate finished PVC door.  
 Others - Commercial Flush door.  
**Kitchen Counter** : Granite with Stainless Steel sink.

**Sanitaryware** : Hindware or Parryware (white).  
**CP Fixtures** : Jaquar Continental or equivalent.  
 Servant's Toilet - Essco or equivalent.  
**Dado** : Ceramic Tiles.  
**Special Ammnities** : Geyser at one toilet.

## Residential Complex

Avishikta, E.M. Bypass



Alaktika, Rajarhat, Newtown



Sonartaree Phase II, Shantiniketan



Sonartaree Phase I, Shantiniketan

Anupama, V. I. P. Road



## Commercial Complex



Aahirini, Rajarhat, Newtown



Avishar, E. M. Bypass



# Bengal Peerless

Housing Development Co. Ltd.

Bengal Peerless Housing Development Company Limited incorporated in 1994, is a joint venture between the West Bengal Housing Board and The Peerless General Finance and Investment Company Limited. The Company is a perfect combination of public sector dynamism with private sector entrepreneurship thereby creating for itself a position of eminence and prominence among Real Estate Development Companies in West Bengal.

Bengal Peerless aims to provide business and living space to all sections of society since we believe that shelter and livelihood are the primary needs for every human being, and every individual must be provided with an opportunity to get his own.

Bengal Peerless endeavours to provide more to the people while demanding the very least in return. We believe in the individual's right to grow and prosper in a hospitable living environment. We offer living space, which is affordable as well as completely secured.

A space where a little bit of imagination and care goes a long way in creating what one would call not merely a house, but a home. Architectural details are given great consideration, so as not to disturb the serene beauty of the natural landscape.

### Bengal Peerless's realty presence encompasses :

- ◆ Residential Complexes Housing 20,155 residents at 4031 flats
- ◆ Commercial Complexes spread over 9,72,783 sft
- ◆ Shopping Mall that houses premium brand outlets
- ◆ Projects spread all over West Bengal



Residential complex : Animikha, Rajarhat, Newtown



Commercial complex : Axis, Rajarhat, Newtown