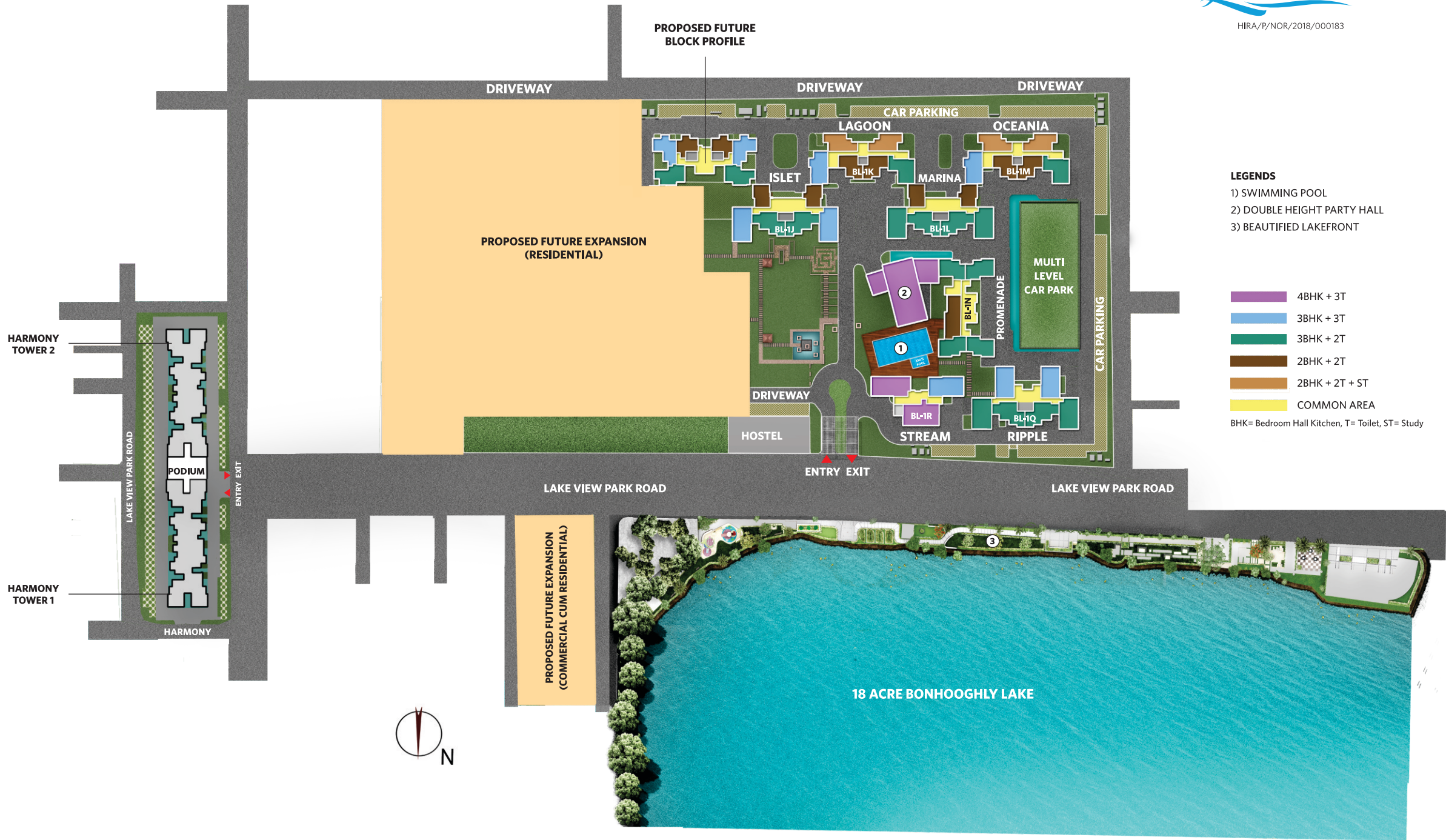


# MASTER SITE PLAN



HIRA/P/NOR/2018/000183



### LEGENDS

- 1) SWIMMING POOL
- 2) DOUBLE HEIGHT PARTY HALL
- 3) BEAUTIFIED LAKEFRONT

- 4BHK + 3T
  - 3BHK + 3T
  - 3BHK + 2T
  - 2BHK + 2T
  - 2BHK + 2T + ST
  - COMMON AREA
- BHK= Bedroom Hall Kitchen, T= Toilet, ST= Study

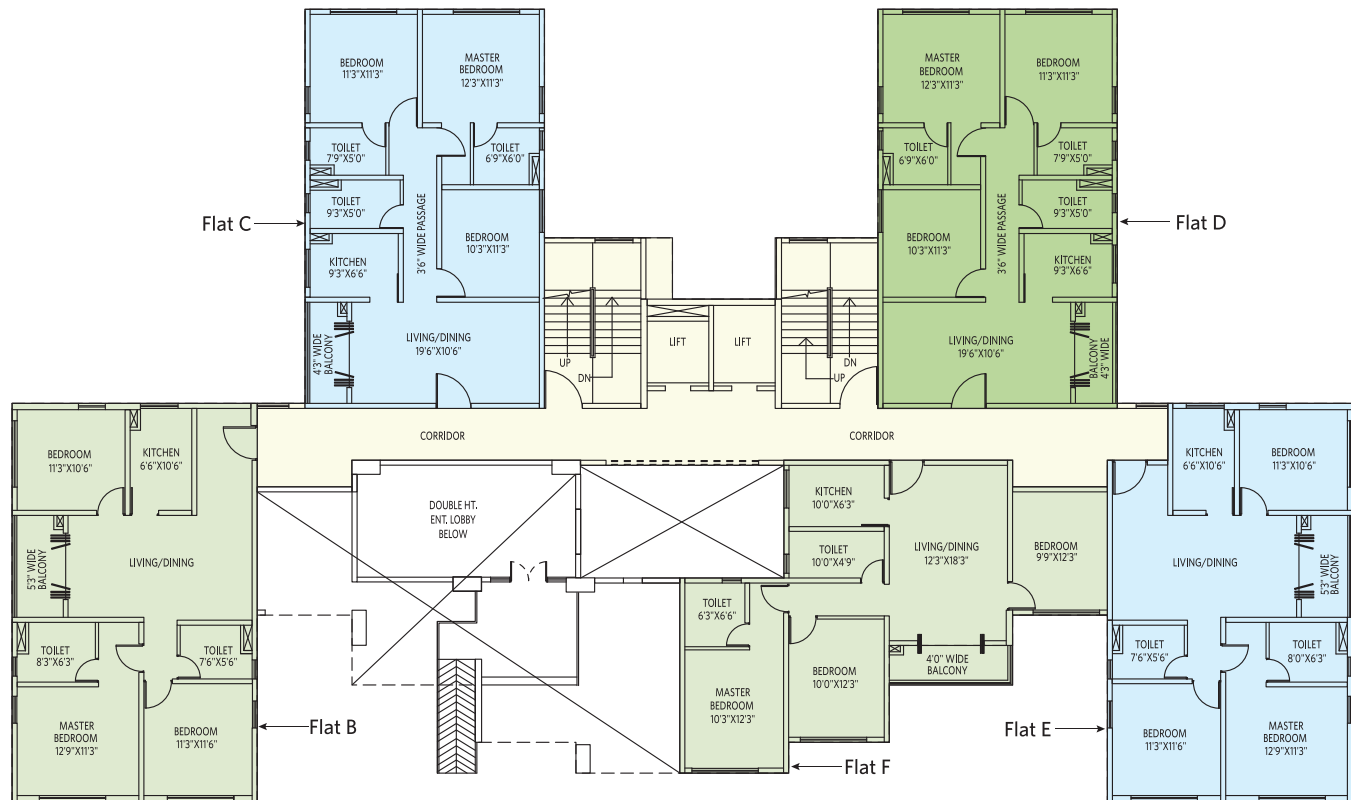


# Ripple (Block-1Q)

## First Floor Plan



HIRA/P/NOR/2018/000183



Flat	Type	CA	BA	BUA
A	NA	NA	NA	NA
B	3BHK + 2T	911	50	1049
C	3BHK + 3T	906	39	1030
D	3BHK + 3T	906	39	1030
E	3BHK + 2T	875	50	1008
F	3BHK + 2T	845	44	997

Unit in sq ft

BHK = Bedroom/Hall/Kitchen, T = Toilet, CA = Carpet Area, BA = Balcony Area, BUA = Built Up Area



RIPPLE

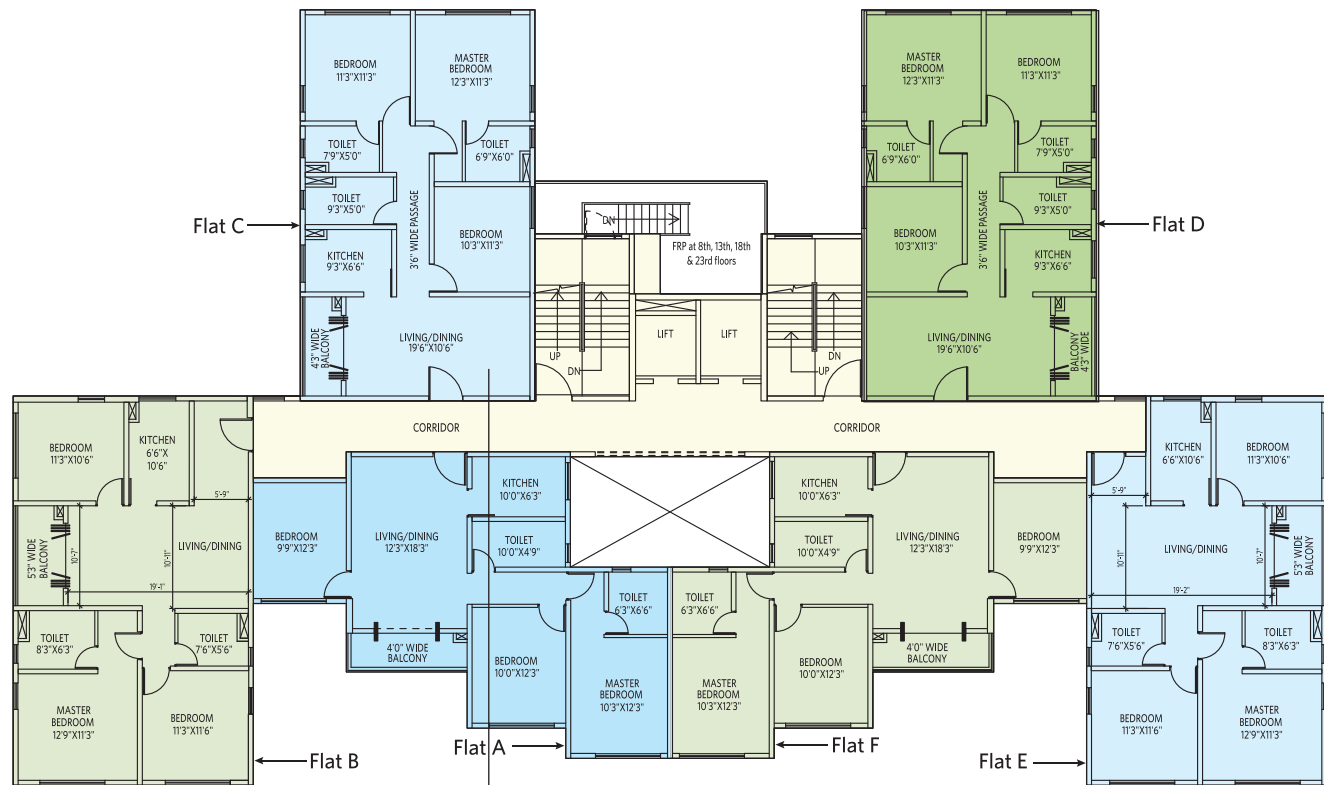


# Ripple (Block-1Q)

## Typical Floor Plan (2nd-25th)



HIRA/P/NOR/2018/000183



**Flat C- 3BHK + 3T**



Flat	Type	CA	BA	BUA
A	3BHK + 2T	845	44	969
B	3BHK + 2T	911	50	1046
C	3BHK + 3T	906	39	1030
D	3BHK + 3T	906	39	1030
E	3BHK + 2T	875	50	1008
F	3BHK + 2T	845	44	969

Unit in sq ft

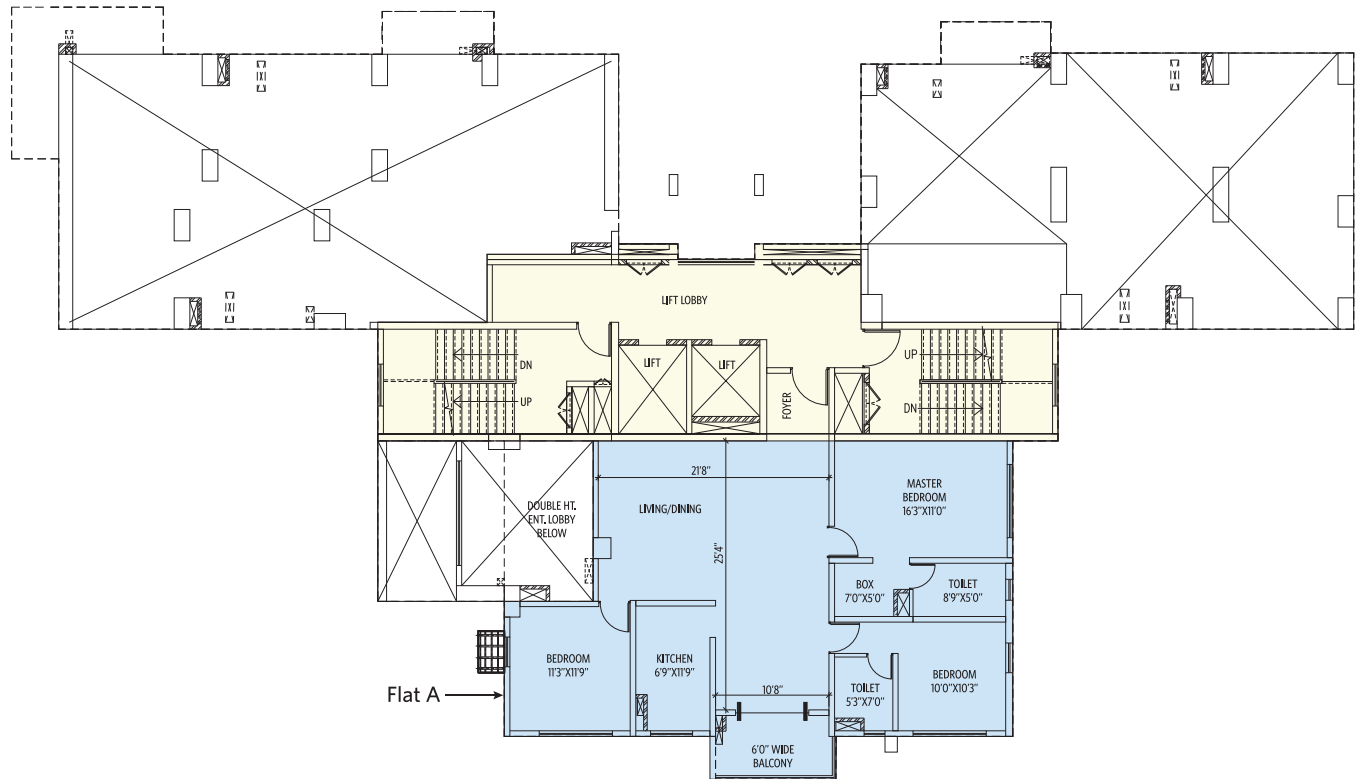
BHK = Bedroom/Hall/Kitchen, T = Toilet, FRP= Fire Refuge Platform, CA = Carpet Area, BA = Balcony Area, BUA= Built Up Area

# Stream (Block- 1R)

## First Floor Plan



HIRA/P/NOR/2018/000183



Flat	Type	CA	BA	BUA
A	3BHK + 2T	1148	58	1321
B	NA	NA	NA	NA
C	NA	NA	NA	NA

Unit in sq ft

BHK = Bedroom/Hall/Kitchen, T = Toilet, CA = Carpet Area, BA = Balcony Area, BUA= Built up Area

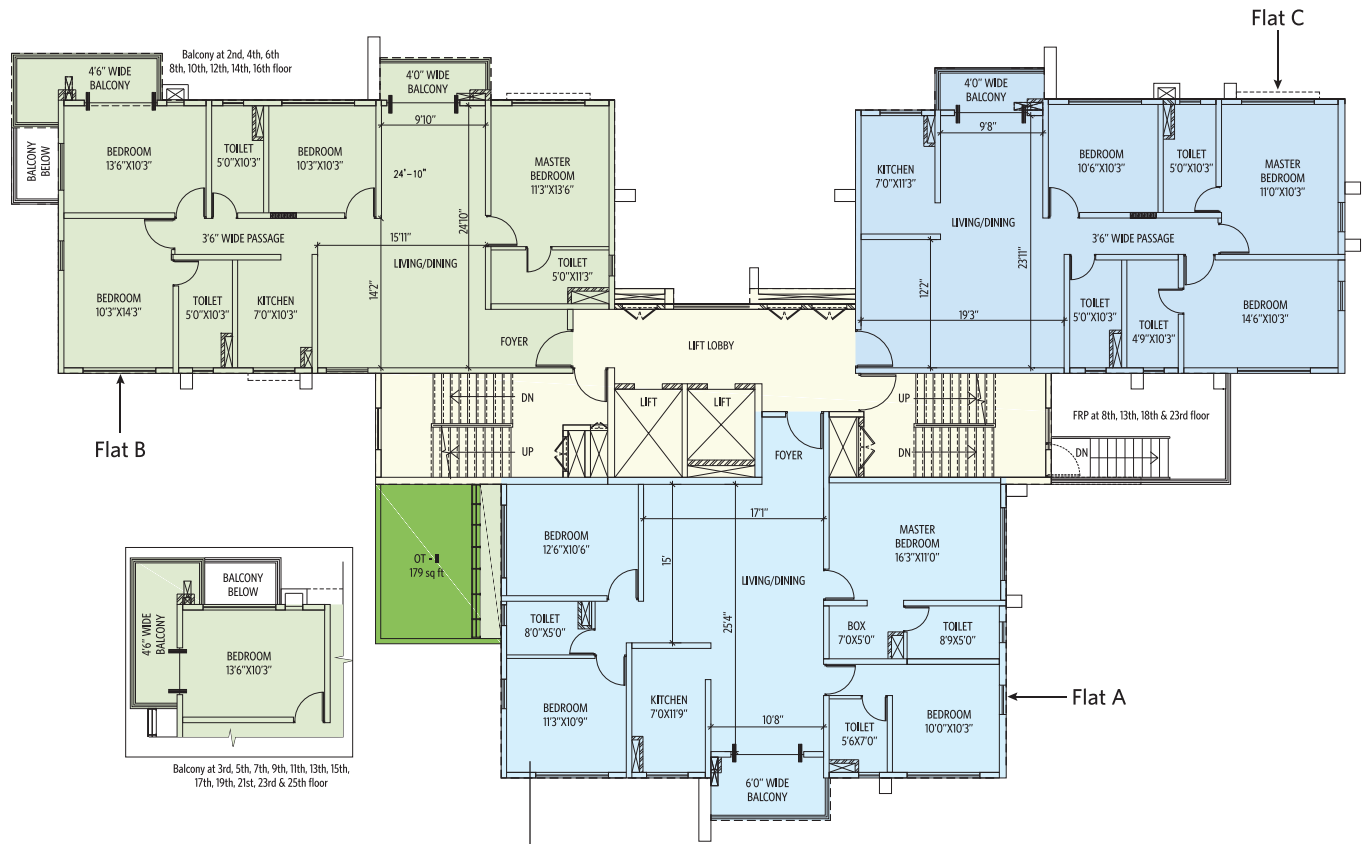


# Stream (Block- 1R)

## Typical Floor Plan (2nd-25th)



HIRA/P/NOR/2018/000183



**Flat A- 4BHK + 3T**



Flat	Type	CA	BA	OT	BUA
A	4BHK + 3T	1281	58	179	1450
B	4BHK + 3T	1246	60	NA	1455
C	3BHK + 3T	1100	33	NA	1226

Unit in sq ft

BHK = Bedroom/Hall/Kitchen, T = Toilet, FRP= Fire Refuge Platform, CA = Carpet Area, BA = Balcony Area, OT= Open Terrace, BUA= Built Up Area

# Promenade (Block-1N)

## First Floor Plan



HIRA/P/NOR/2018/000183



Flat	Type	CA	BA	OT	BUA
D	2BHK + 2T	518	17	61	611
E	3BHK + 2T	754	30	256	862
F	3BHK + 2T	754	30	NA	865

Unit in sq ft

BHK = Bedroom/Hall/Kitchen, T = Toilet, CA = Carpet Area, BA = Balcony Area, OT= Open Terrace, BUA= Built Up Area

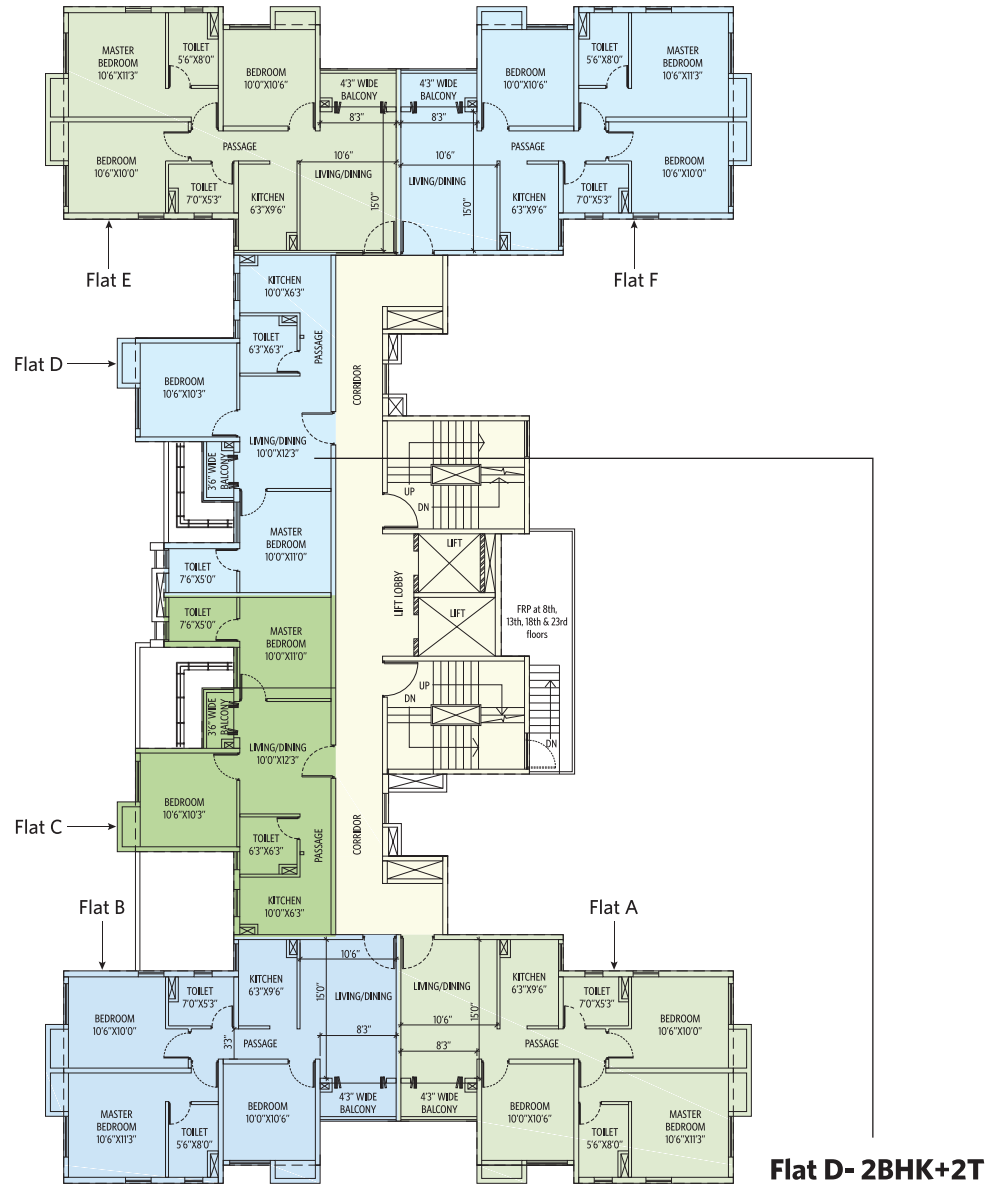


# Promenade (Block-1N)

## Typical Floor Plan (2nd-25th)



HIRA/P/NOR/2018/000183



Flat	Type	CA	BA	BUA
A	3BHK + 2T	754	30	865
B	3BHK + 2T	754	30	862
C	2BHK + 2T	518	17	611
D	2BHK + 2T	518	17	611
E	3BHK + 2T	754	30	862
F	3BHK + 2T	754	30	865

Unit in sq ft

BHK = Bedroom/Hall/Kitchen, T = Toilet, FRP= Fire Refuge Platform, CA = Carpet Area, BA = Balcony Area, BUA= Built Up Area

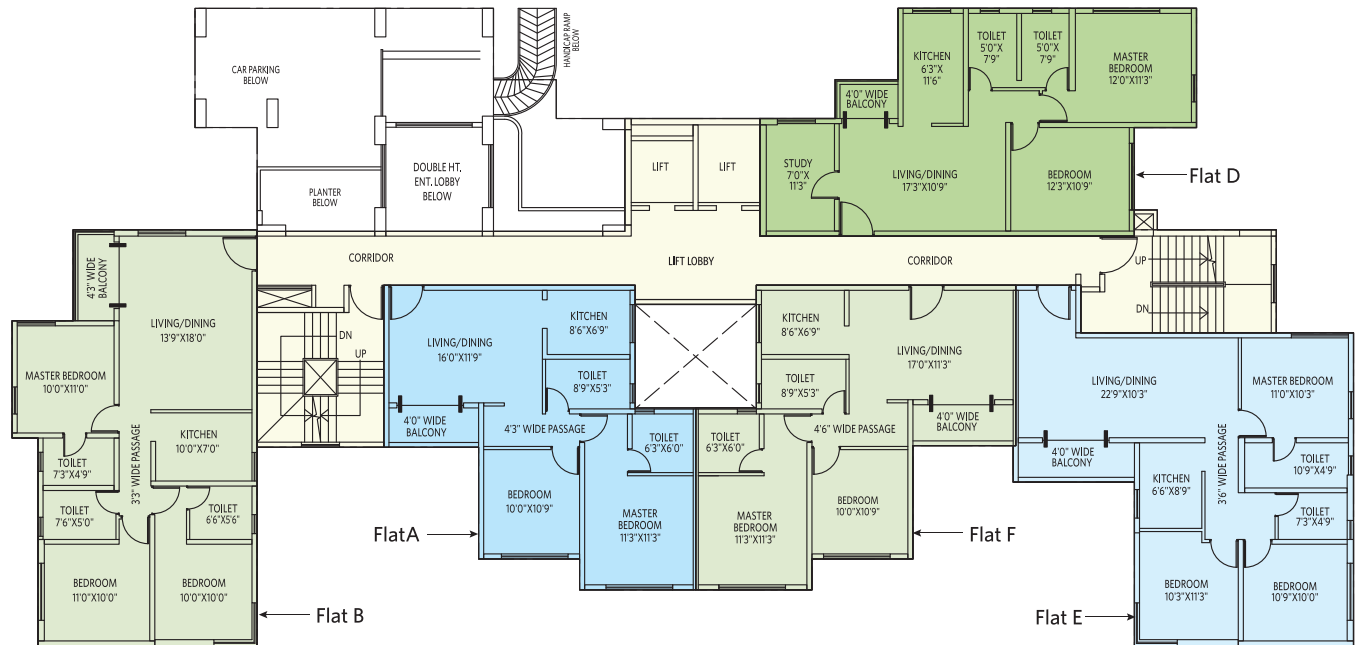


# Oceania (Block-1M)

## First Floor Plan



HIRA/P/NOR/2018/000183



Flat	Type	CA	BA	BUA
A	2BHK + 2T	658	32	760
B	3BHK + 3T	856	33	975
C	NA	NA	NA	NA
D	2BHK + 2T + ST	751	20	856
E	3BHK + 2T	833	42	959
F	2BHK + 2T	667	38	772

Unit in sq ft

BHK = Bedroom/Hall/Kitchen, T = Toilet, ST = Study, CA = Carpet Area, BA = Balcony Area, BUA = Built Up Area



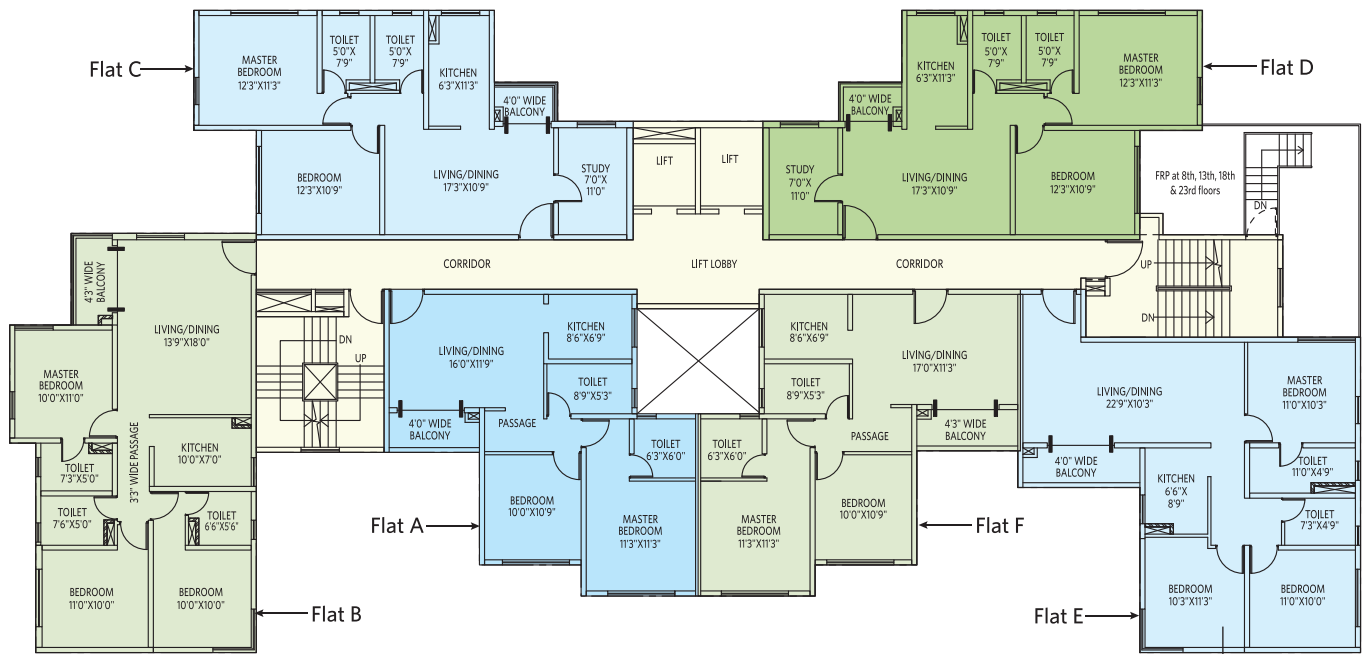


# Oceania (Block-1M)

## Typical Floor Plan (2nd-25th)



HIRA/P/NOR/2018/000183



**Flat E- 3BHK+2T**



Flat	Type	CA	BA	BUA
A	2BHK + 2T	658	32	760
B	3BHK + 3T	856	33	975
C	2BHK + 2T + ST	750	20	865
D	2BHK + 2T + ST	751	20	856
E	3BHK + 2T	833	42	959
F	2BHK + 2T	667	38	772

Unit in sq ft

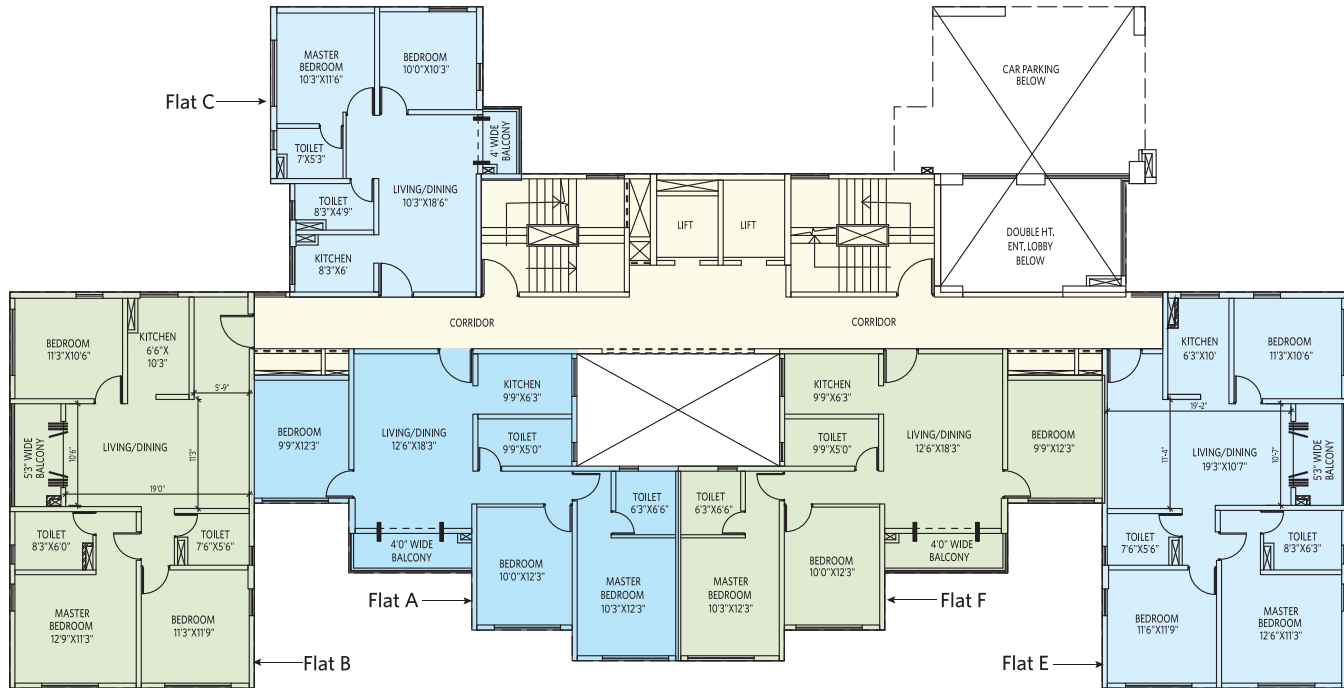
BHK = Bedroom/Hall/Kitchen, T = Toilet, ST = Study, FRP= Fire Refuge Platform, CA = Carpet Area, BA = Balcony Area, BUA= Built Up Area

# Marina (Block-1L)

## First Floor Plan



HIRA/P/NOR/2018/000183



Flat	Type	CA	BA	BUA
A	3BHK + 2T	845	44	969
B	3BHK + 2T	910	50	1046
C	2BHK + 2T	578	22	672
D	NA	NA	NA	NA
E	3BHK + 2T	873	50	1009
F	3BHK + 2T	845	44	969

Unit in sq ft

BHK = Bedroom/Hall/Kitchen, T = Toilet, CA = Carpet Area, BA = Balcony Area, BUA= Built Up Area

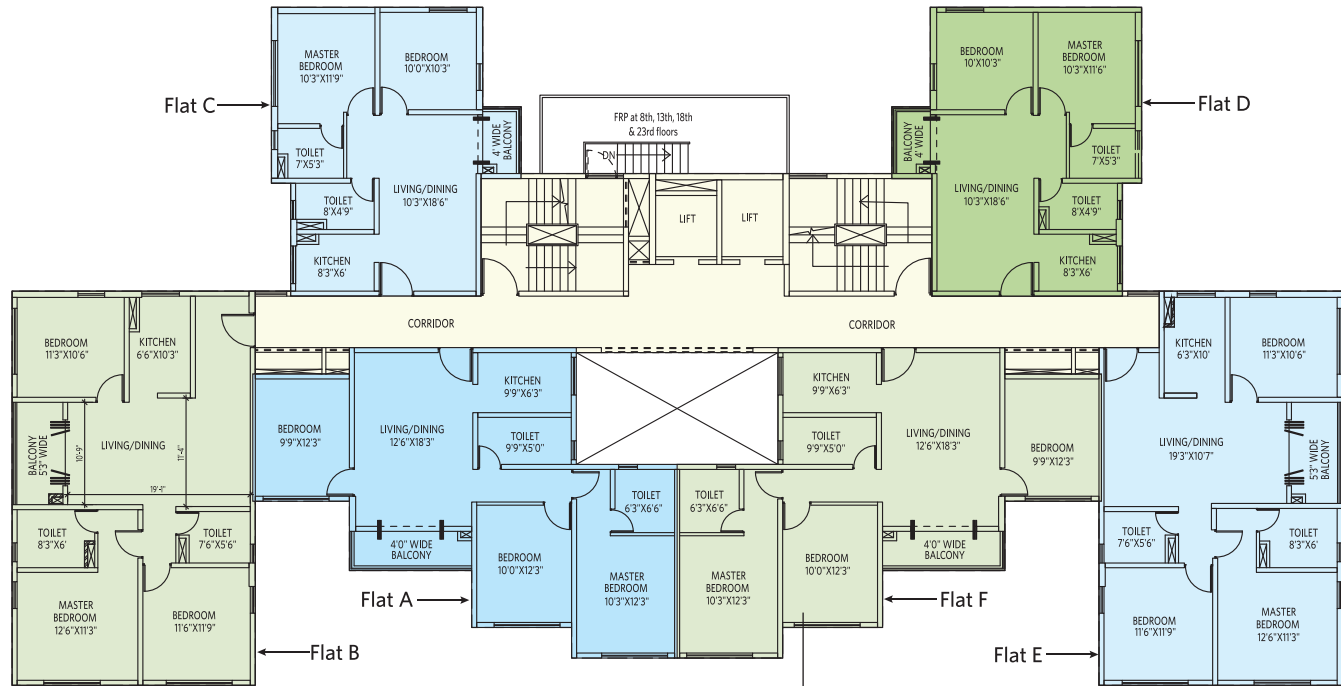


# Marina (Block-1L)

## Typical Floor Plan (2nd-25th)



HIRA/P/NOR/2018/000183



**Flat F- 3BHK+2T**



Flat	Type	CA	BA	BUA
A	3BHK + 2T	845	44	969
B	3BHK + 2T	910	50	1046
C	2BHK + 2T	578	22	672
D	2BHK + 2T	581	22	672
E	3BHK + 2T	873	50	1009
F	3BHK + 2T	845	44	969

Unit in sq ft

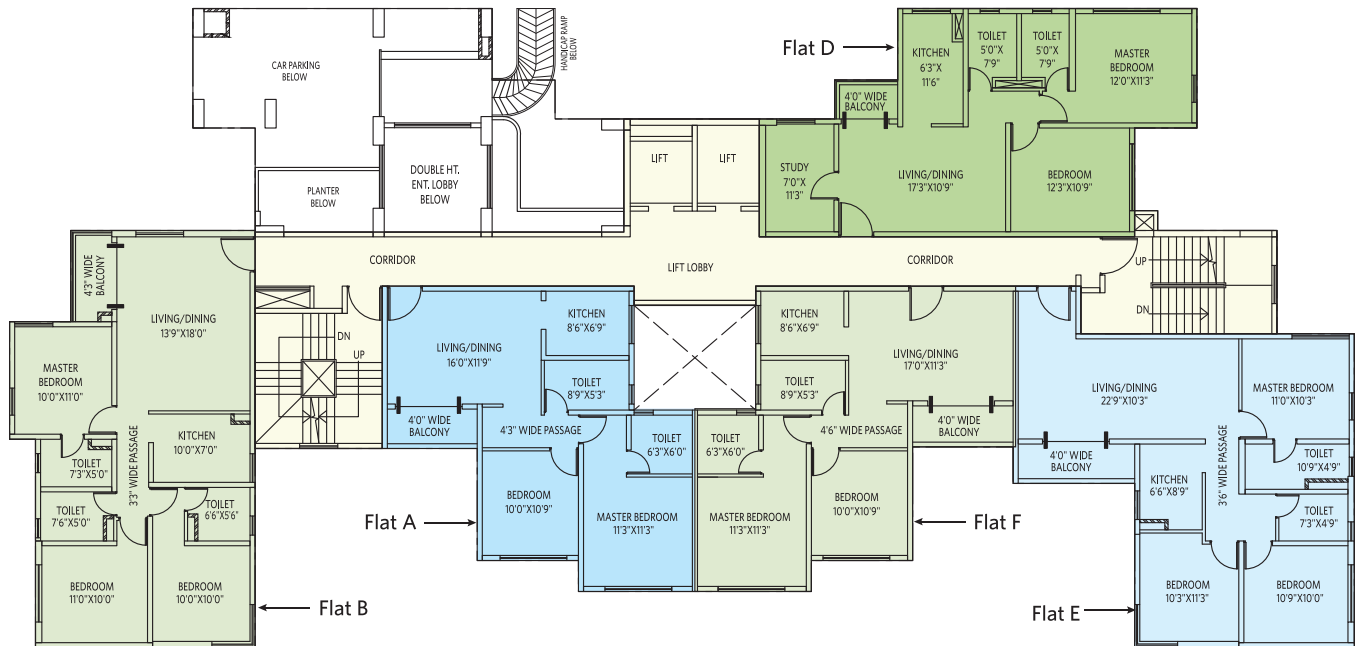
BHK = Bedroom/Hall/Kitchen, T = Toilet, FRP= Fire Refuge Platform, CA = Carpet Area, BA = Balcony Area, BUA= Built Up Area

# Lagoon (Block-1K)

## First Floor Plan



HIRA/P/NOR/2018/000183



Flat	Type	CA	BA	BUA
A	2BHK + 2T	658	32	760
B	3BHK + 3T	856	32	975
C	NA	NA	NA	NA
D	2BHK + 2T + ST	751	20	856
E	3BHK + 2T	832	42	959
F	2BHK + 2T	667	38	772

Unit in sq ft

BHK = Bedroom/Hall/Kitchen, T = Toilet, ST = Study, CA = Carpet Area, BA = Balcony Area, BUA = Built Up Area

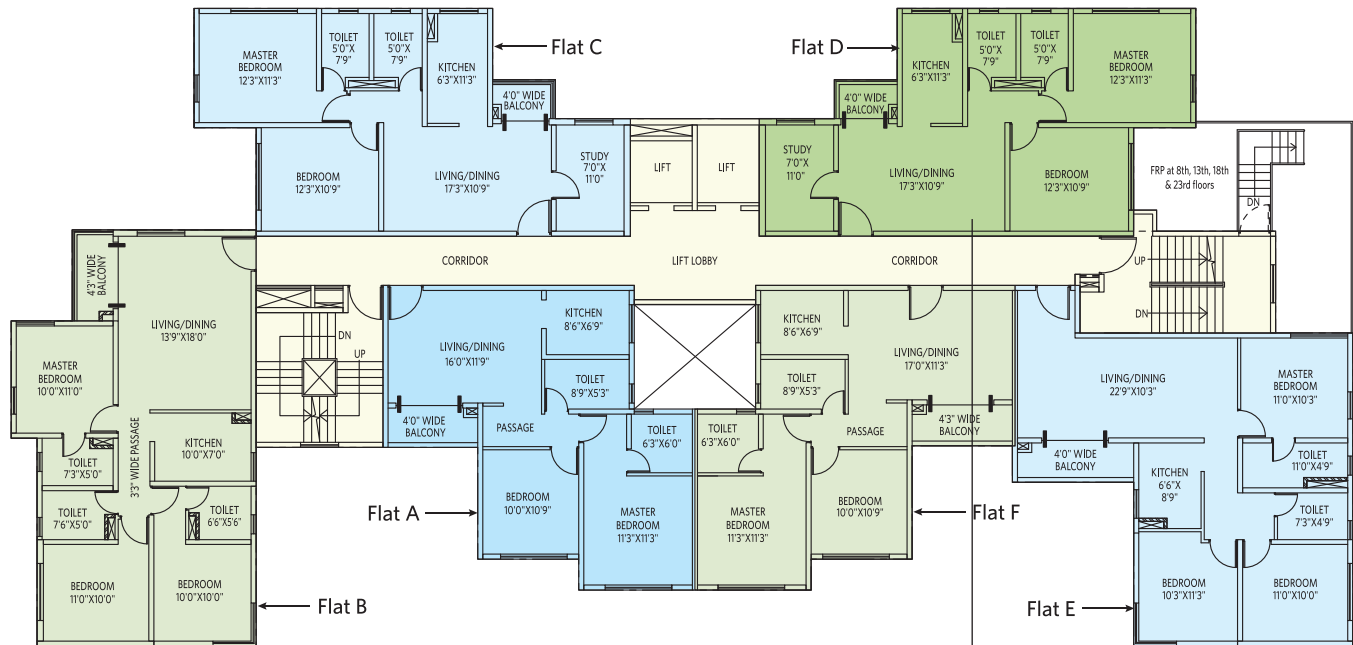


# Lagoon (Block-1K)

## Typical Floor Plan (2nd-25th)



HIRA/P/NOR/2018/000183



**Flat D- 2BHK + 2T + ST**

Flat	Type	CA	BA	BUA
A	2BHK + 2T	658	32	760
B	3BHK + 3T	856	32	975
C	2BHK + 2T + ST	750	20	855
D	2BHK + 2T + ST	751	20	856
E	3BHK + 2T	832	42	959
F	2BHK + 2T	667	38	772

Unit in sq ft



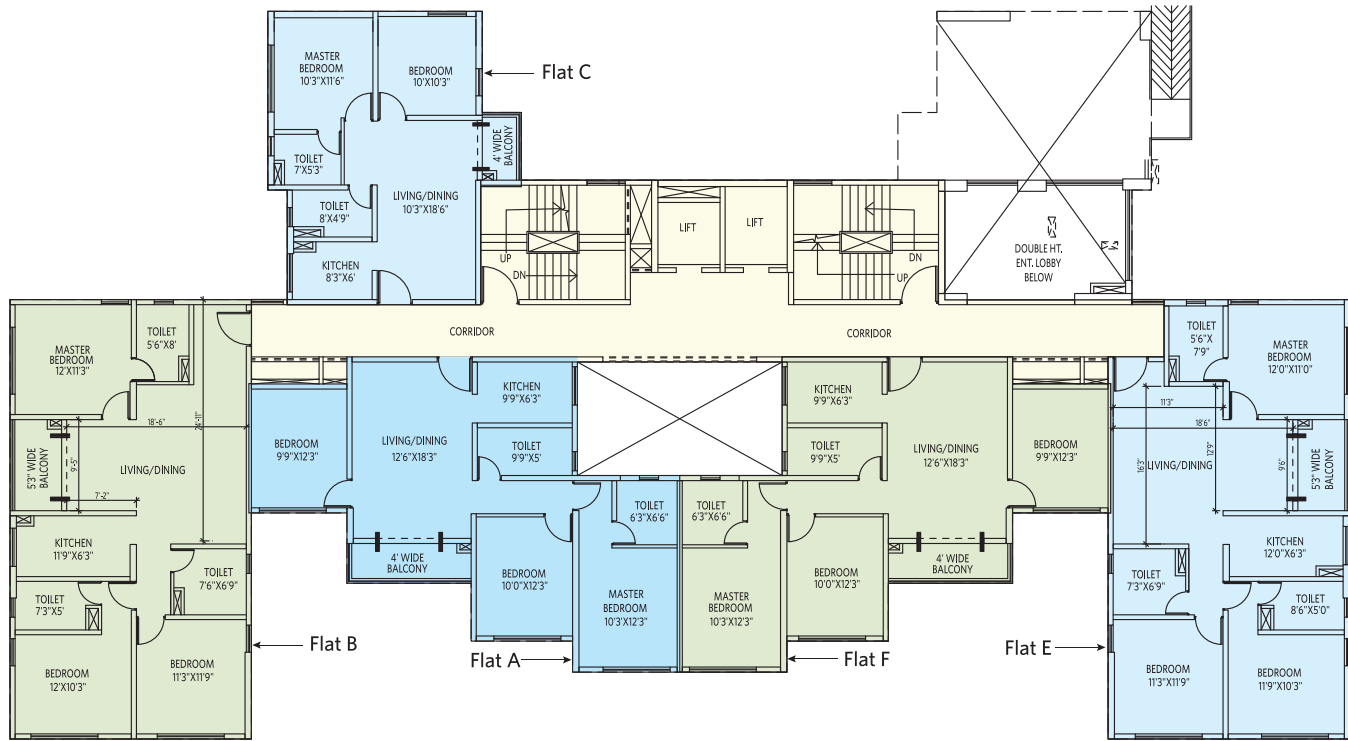
BHK = Bedroom/Hall/Kitchen, T = Toilet, ST = Study, FRP= Fire Refuge Platform, CA = Carpet Area, BA = Balcony Area, BUA= Built Up Area

# Islet (Block-1J)

## First Floor Plan



HIRA/P/NOR/2018/000183



Flat	Type	CA	BA	BUA
A	3BHK + 2T	844	44	968
B	3BHK + 3T	989	44	1122
C	2BHK + 2T	578	22	672
D	NA	NA	NA	NA
E	3BHK + 3T	954	44	1088
F	3BHK + 2T	844	44	968

Unit in sq ft

BHK = Bedroom/Hall/Kitchen, T = Toilet, CA = Carpet Area, BA = Balcony Area, BUA= Built Up Area

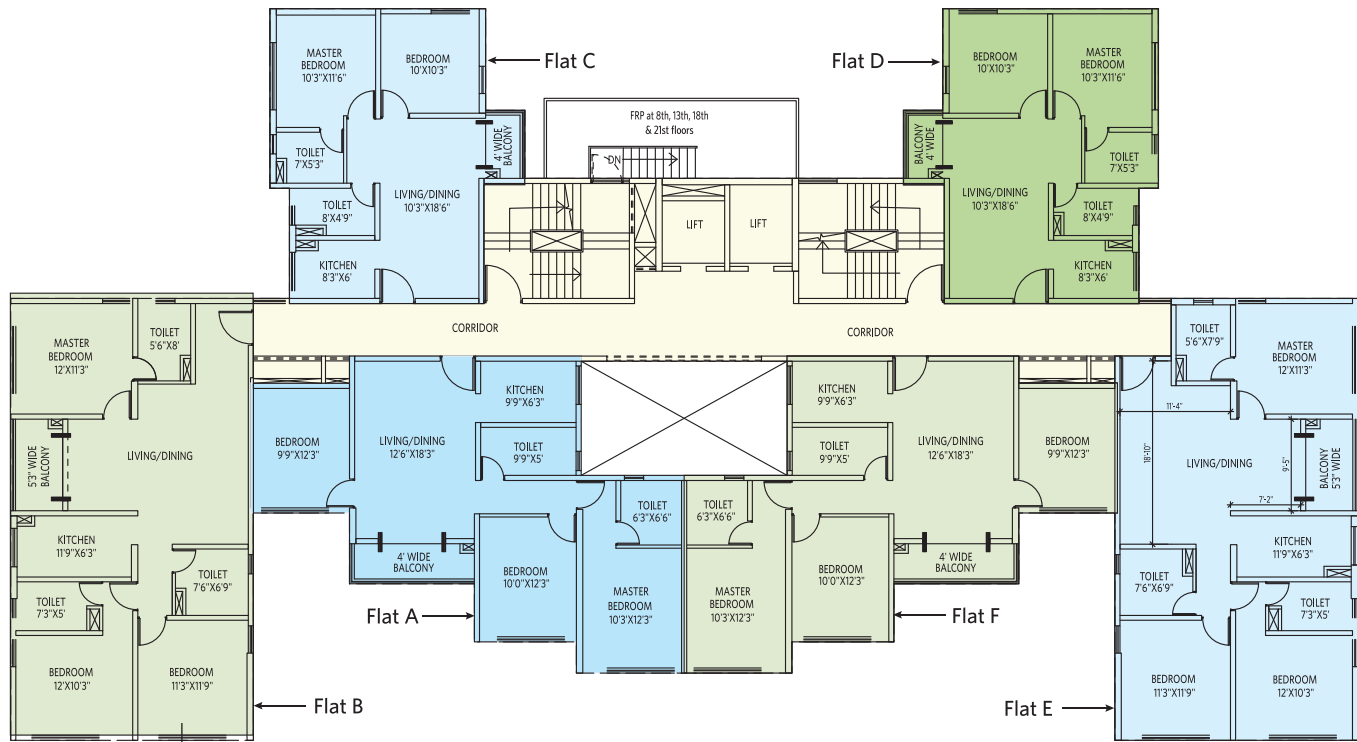


# Islet (Block-1J)

## Typical Floor Plan (2nd-22nd)



HIRA/P/NOR/2018/000183



**Flat B- 3BHK+3T**



Flat	Type	CA	BA	BUA
A	3BHK + 2T	844	44	968
B	3BHK + 3T	989	44	1122
C	2BHK + 2T	578	22	672
D	2BHK + 2T	581	22	672
E	3BHK + 3T	954	44	1088
F	3BHK + 2T	844	44	968

Unit in sq ft

BHK = Bedroom/Hall/Kitchen, T = Toilet, FRP= Fire Refuge Platform, CA = Carpet Area, BA = Balcony Area, BUA= Built Up Area