

DTC
CAPITAL CITY
RAJARHAT

Site Address: DTC Capital City, Rajarhat Main Road, North 24 Parganas, Pin - 700135

Marketing Address: Mallik House, 3rd Floor, 7 Hare Street, Kolkata - 700001

☎ 98305 85 85 6 E marketing@dtcgroup.in W www.dtc.capitalcity.com

Disclaimer:

The images are architect's expressions and are for illustrative purposes only.

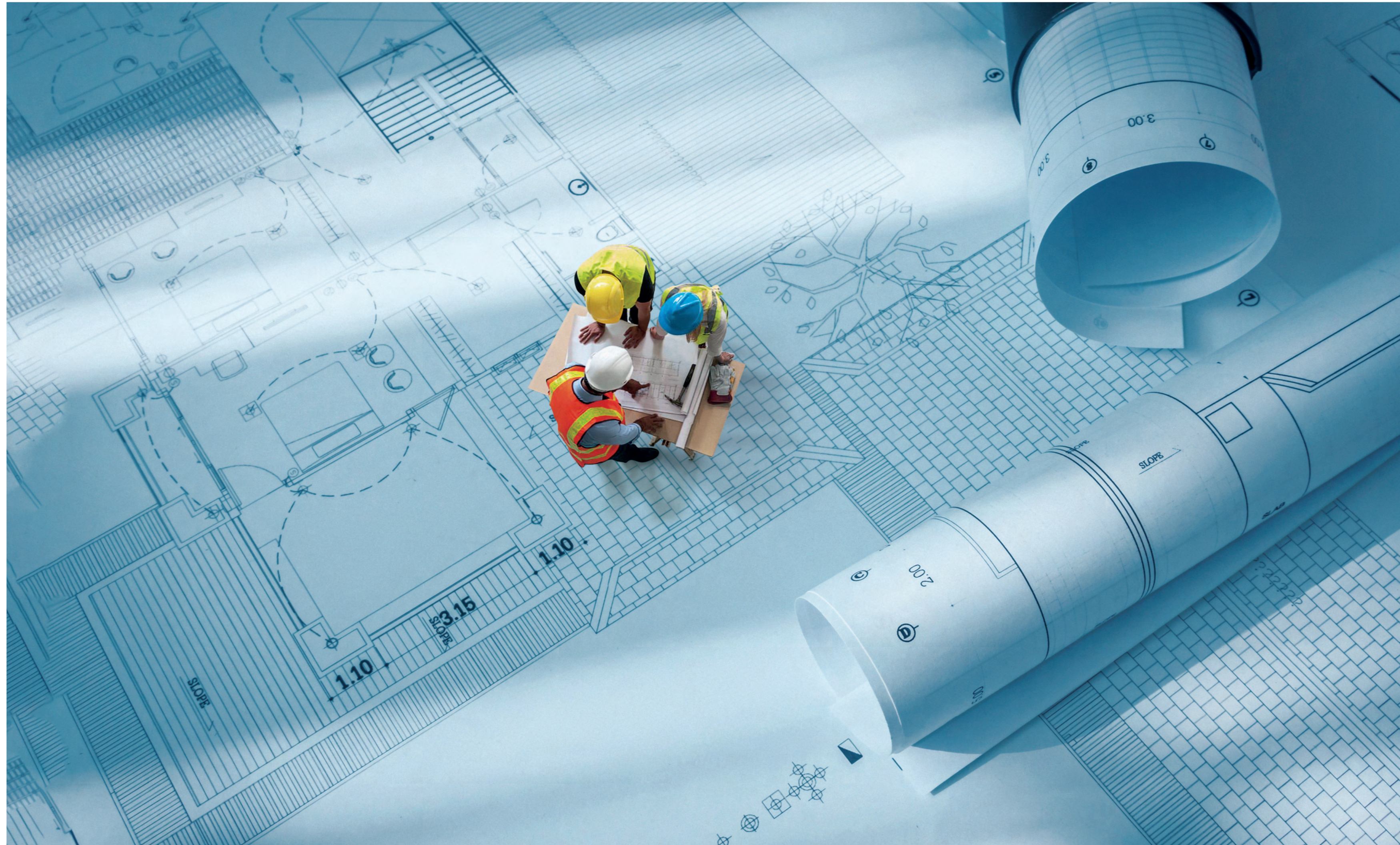
The furniture shown in the plan is for layout purposes only and not provided by the developer. Flat layout and dimensions will be as per sale agreement.

Specification and master plan amenities are for indication and for representational only, final amenities and specification will be as per sale agreement.

LIVE LIFE WITH A

BIG

**COURSE OF
ACTION**



BIG

PLANS FOR A GRAND LIFE

DTC Capital City has planned every detail of the project keeping in mind the promise of an expansive living. Every provision, facility and the inspiration behind every design all have been carefully thought to add magnanimity to life.

DTC CAPITAL CITY RAJARHAT



LANDMARKS:

| | |
|------------------------------|---------|
| Rajarhat Apex Hospital | 9 mins |
| Lotus Hospital | 12 mins |
| Derozio Memorial College | 16 mins |
| Delhi Public School Megacity | 18 mins |
| Rajarhat Crossing | 19 mins |
| City Centre 2 | 19 mins |
| Upcoming CBD-2 Metro Station | 19 mins |
| Ecospace Business Park | 20 mins |
| Tata Consultancy Services | 20 mins |
| Ecospace Business Park | 20 mins |
| Narayana School | 21 mins |
| Ecopark | 23 mins |
| Tata Cancer Hospital | 28 mins |
| Airport | 30 mins |
| Techno India College | 30 mins |

IT SEZ

*Map not to scale



Main entrance

MAKE A

BIG

**ENTRANCE TO
A SPECTACULAR
LIVING**

Entrance to the DTC Capital City welcomes all with a sweeping embrace. Water bodies and curvilinear green walls further enhance this experience. Beyond the grand gates of your home lie over 90,000 sq.ft. of landscaped podium serving as a tranquil community area for residents.

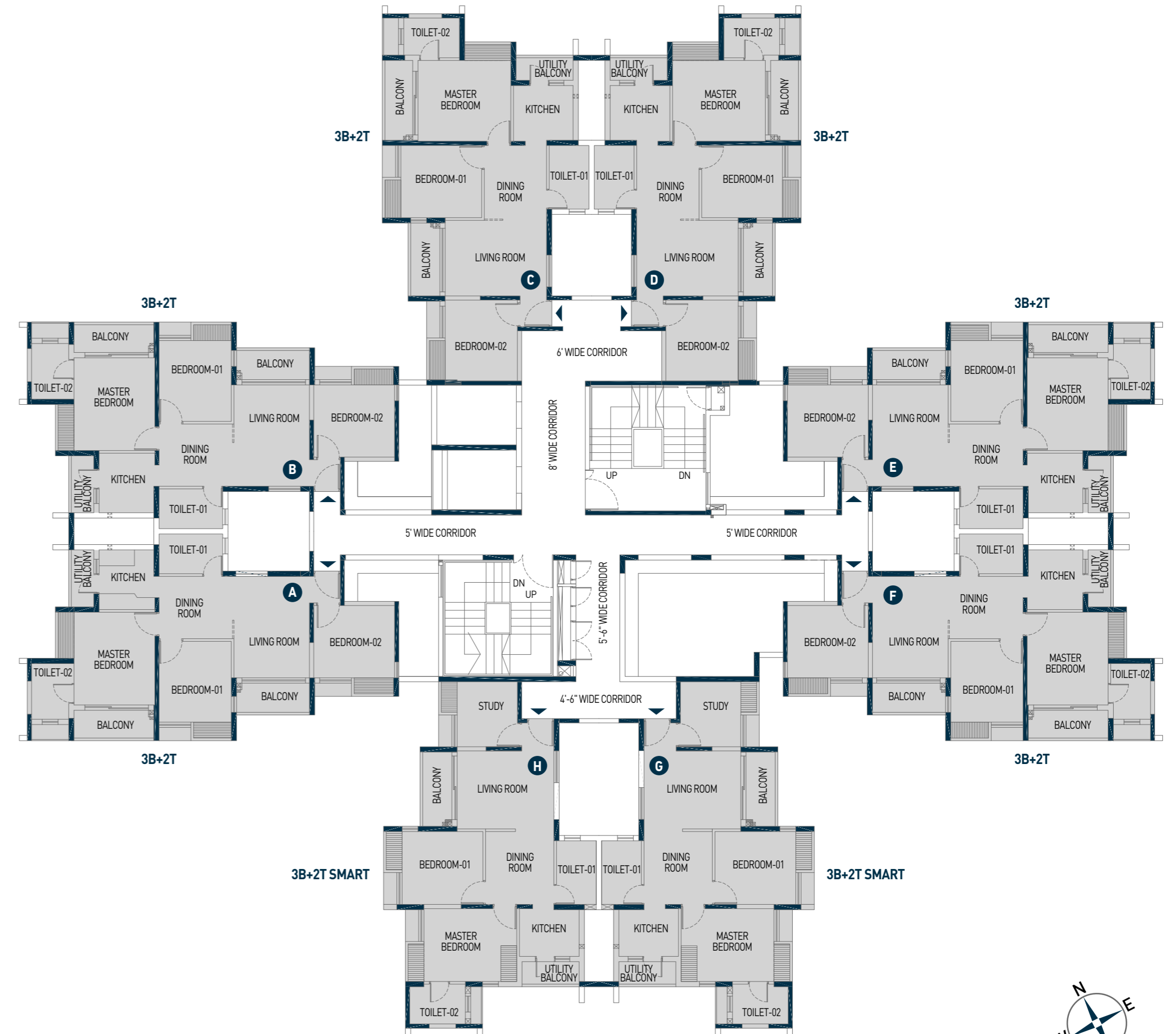


Tower entrance

FLOOR PLAN

TYPICAL TOWER - 1,2,3,9,10

| UNIT TYPE | SBUA | BUA | CARPET AREA | WARDROBE AREA | BALCONY AREA |
|---------------------------|-------------|------------|-------------|---------------|--------------|
| A, B, C, D, E & F (3B+2T) | 1150 sq.ft. | 863 sq.ft. | 648 sq.ft. | 30 sq.ft. | 94 sq.ft. |
| G & H (3B+2T SMART) | 1030 sq.ft. | 772 sq.ft. | 607 sq.ft. | 26 sq.ft. | 58 sq.ft. |



UNIT PLAN



TYPICAL 3 BHK

| UNIT TYPE | SBUA | BUA | CARPET AREA | WARDROBE AREA | BALCONY AREA |
|---------------------------|-------------|------------|-------------|---------------|--------------|
| A, B, C, D, E & F (3B+2T) | 1150 sq.ft. | 863 sq.ft. | 648 sq.ft. | 30 sq.ft. | 94 sq.ft. |

TYPICAL 3 BHK SMART

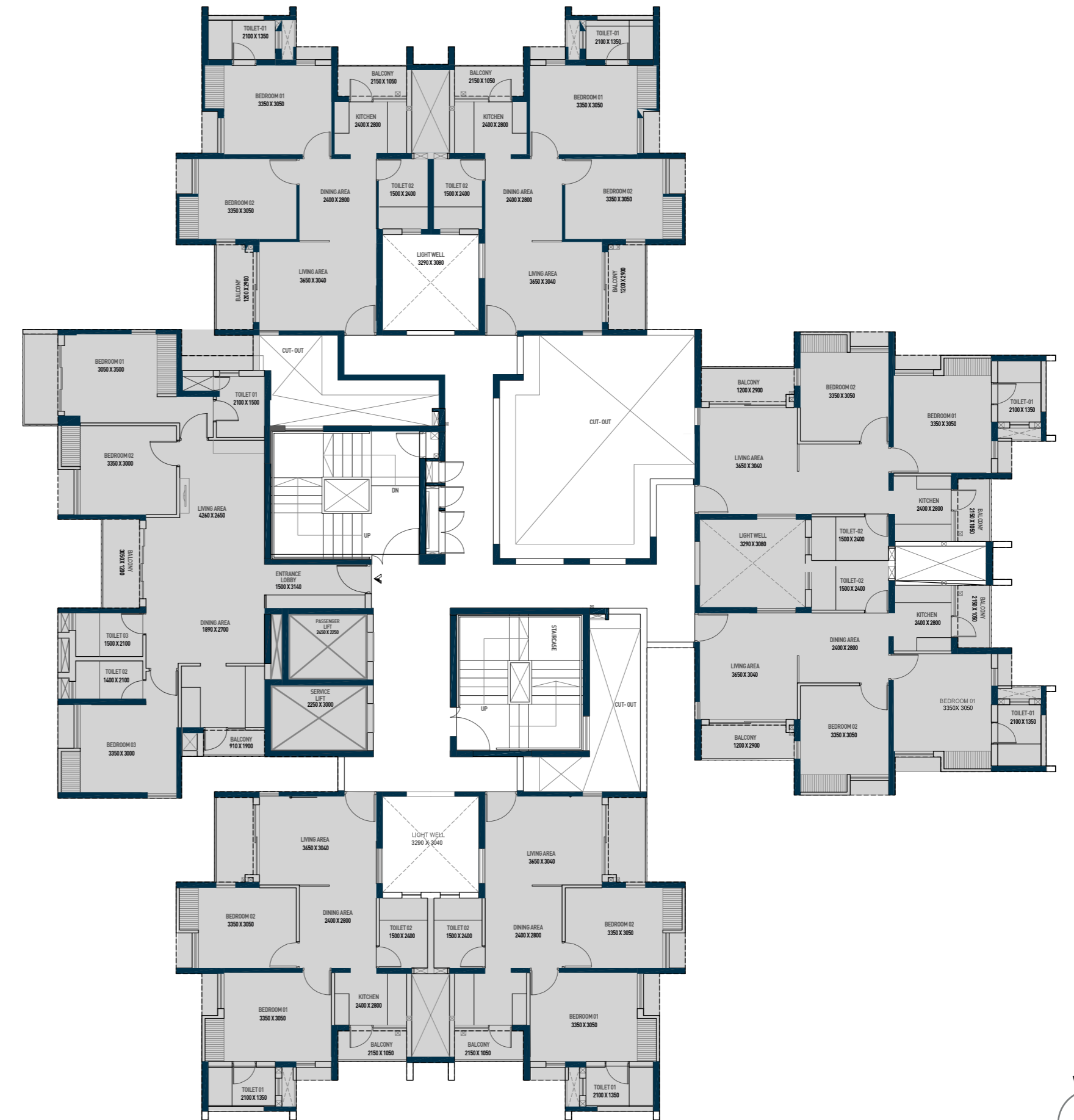
| UNIT TYPE | SBUA | BUA | CARPET AREA | WARDROBE AREA | BALCONY AREA |
|---------------------|-------------|------------|-------------|---------------|--------------|
| G & H (3B SMART+2T) | 1030 sq.ft. | 772 sq.ft. | 607 sq.ft. | 26 sq.ft. | 58 sq.ft. |

** Only D types flat bedroom 1 will have only 1 window.

FLOOR PLAN

TYPICAL TOWER - 5

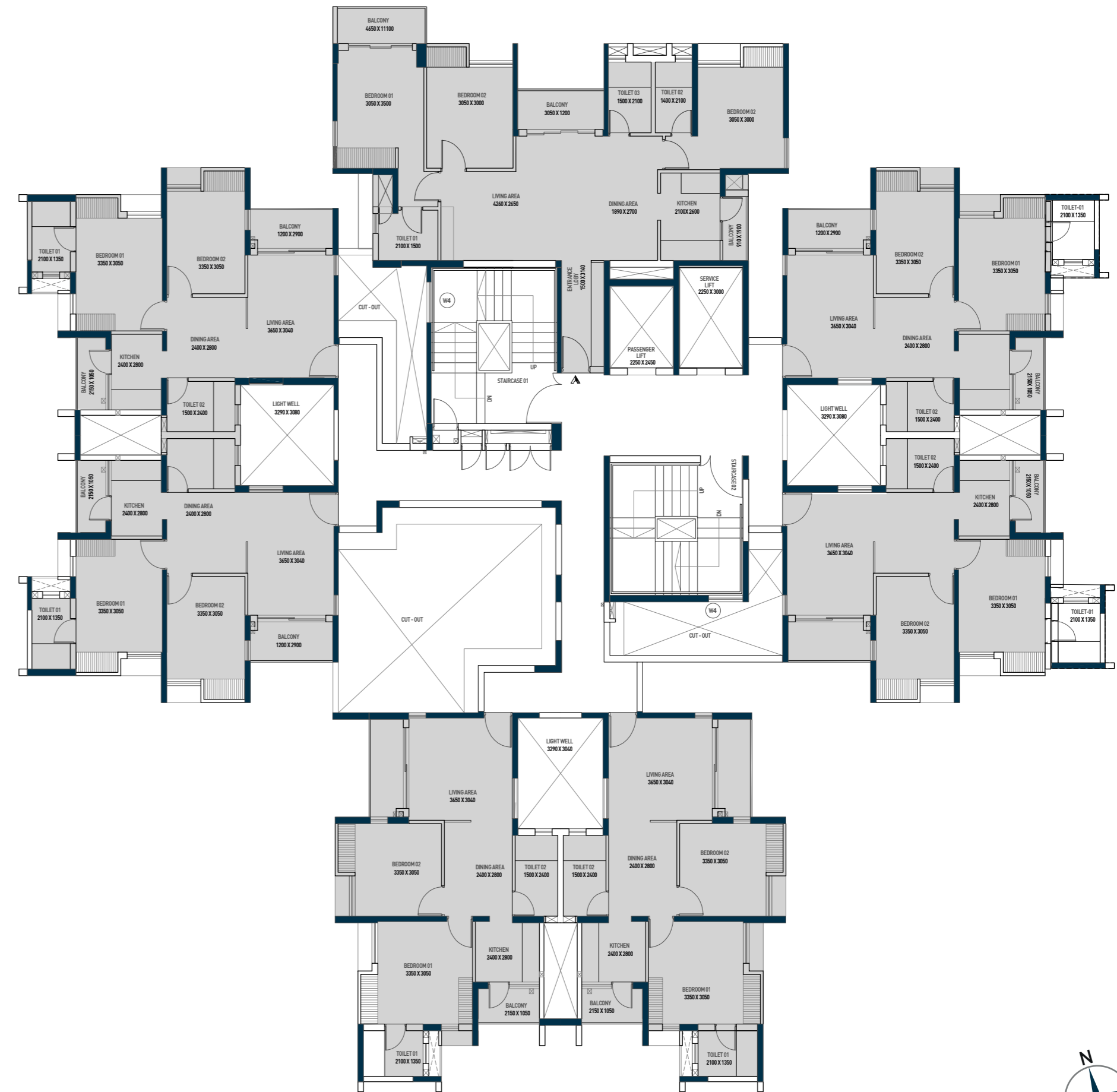
| UNIT TYPE | SBUA | BUA | CARPET AREA | WARDROBE AREA | BALCONY AREA |
|---------------------------|-------------|-------------|-------------|---------------|--------------|
| A (3B+3T) | 1430 sq.ft. | 1075 sq.ft. | 850 sq.ft. | 32 sq.ft. | 95 sq.ft. |
| C, D, E, F, G & H (2B+2T) | 910 sq.ft. | 685 sq.ft. | 531 sq.ft. | 20 sq.ft. | 61 sq.ft. |



FLOOR PLAN

TYPICAL TOWER - 6

| UNIT TYPE | SBUA | BUA | CARPET AREA | WARDROBE AREA | BALCONY AREA |
|---------------------------|-------------|-------------|-------------|---------------|--------------|
| A (3B+3T) | 1430 sq.ft. | 1075 sq.ft. | 850 sq.ft. | 32 sq.ft. | 95 sq.ft. |
| C, D, E, F, G & H (2B+2T) | 910 sq.ft. | 685 sq.ft. | 531 sq.ft. | 20 sq.ft. | 61 sq.ft. |



UNIT PLAN

TYPICAL **2 BHK**

| UNIT TYPE | SBUA | BUA | CARPET AREA | WARDROBE AREA | BALCONY AREA |
|---------------------------|------------|------------|-------------|---------------|--------------|
| C, D, E, F, G & H (2B+2T) | 910 sq.ft. | 685 sq.ft. | 531 sq.ft. | 20 sq.ft. | 61 sq.ft. |



MASTER PLAN



1 CENTRAL LAWN



6 MOUNDS



2 PRIMARY WALKWAY



7 WATER FOUNTAIN SQUARE



3 THE ORCHARD



8 REFLEXOLOGY COURT



4 HERB GARDEN



9 STEPPING STONES



5 SIT OUT ZONE



10 KIDS' PLAY AREA





INDOOR GAMES ROOM



BIG

**HAPPINESS,
JUST BEYOND YOUR HOME**

Introducing
Club ~ Atlas

We've crafted to near perfection not simply an arena for recreation but a universe of experiences. This is no ordinary clubhouse, but a world of amenities curated especially for you to enrich life beyond four walls.

Because we know, the biggest smiles and the heartiest laughter comes from moments with your loved ones that become memories. And that is precisely why Atlas was designed, an experiential space to help map millions of priceless memories.

SPECIFICATIONS

Superstructure

- Earthquake resistant R.C.C framed structure

External finish

- Weather proof exterior paints finish

Master Bedroom

- Flooring: Vitrified tiles
- Walls: Putty punning

Other Bedroom

- Flooring: Vitrified tiles
- Walls: Putty punning

Living/Dining Room

- Flooring: Vitrified tiles
- Walls: Putty punning

Kitchen

- Flooring: Anti-skid Vitrified tiles
- Dado: Dado of Ceramic tile above kitchen counter up to 2 feet height.
- Walls: Putty punning
- Counter: Polished granite counter on R.C.C slab with kitchen sink and sink cock.

Toilet

- Flooring: Ceramic tiles
- Dado: Dado of Vitrified tiles up to door height

Doors & Window

- Main door: Solid core flush door with laminate finish on outside and paint finish from inside
- Internal door: Solid core flush door with paint finish on both sides
- Window: It will be powder coated

CP & Sanitary Fittings

- EWC in toilets and basin from CERA/Jaquar/Hindware /Kohler or equivalent
- All other CP fittings are from CERA/Jaquar/Hindware /Kohler or equivalent

Electrical

- ISI mark concealed FRLS copper wiring with modular switch of Anchor-Panasonic or equivalent make
- Adequate electrical switch and sockets in rooms with AC points in the living room & bedroom
- Points for refrigerator, water purifier, microwave/mixer grinder, exhaust fan in kitchen and points for geyser, exhaust fan along with other electrical points in toilets

Green Initiatives

- Organic waste management
- Water efficient fixtures
- Rainwater harvesting
- Sewage treatment plant
- Ample green space with use of native plants in the landscape
- Recycled water for gardening
- Dual Flushing system
- Low VOC materials
- Use of LED lights in common areas
- Use of SRI tiles to reflect heat from the roof



KIDS' ROOM



SWIMMING POOL