

All features, specifications, amenities, layout images and other aspects of the apartments/building(s)/complex mentioned in this brochure are only representational and informative. The same may be subject to change/revision/alteration in terms of approvals, orders, directions and/or regulations of the concerned/relevant authorities, and/or compliance with laws/regulations in force from time to time. All dimensions have been rounded off. This brochure is not a legal offer or document.

Phase III HIRA/P/NOR/2020/000940
Phase II HIRA/P/NOR/2018/000184 | hira.wb.gov.in

Project Financial Assistance
Edelweiss



Follow us on

Download the
Siddha Group App

SIDDHA
Corporate Office
Siddha Park 99A Park Street
Kolkata 700016 India
P +91 8048 767 767
E info@siddhagroup.com
W siddhagroup.com
Site
Action Area IIC, New Town
Street No 707, Kolkata 700161 India
E galaxia@siddhagroup.com
W siddhagalaxia.com

AT SIDDHA
SKYWALKS



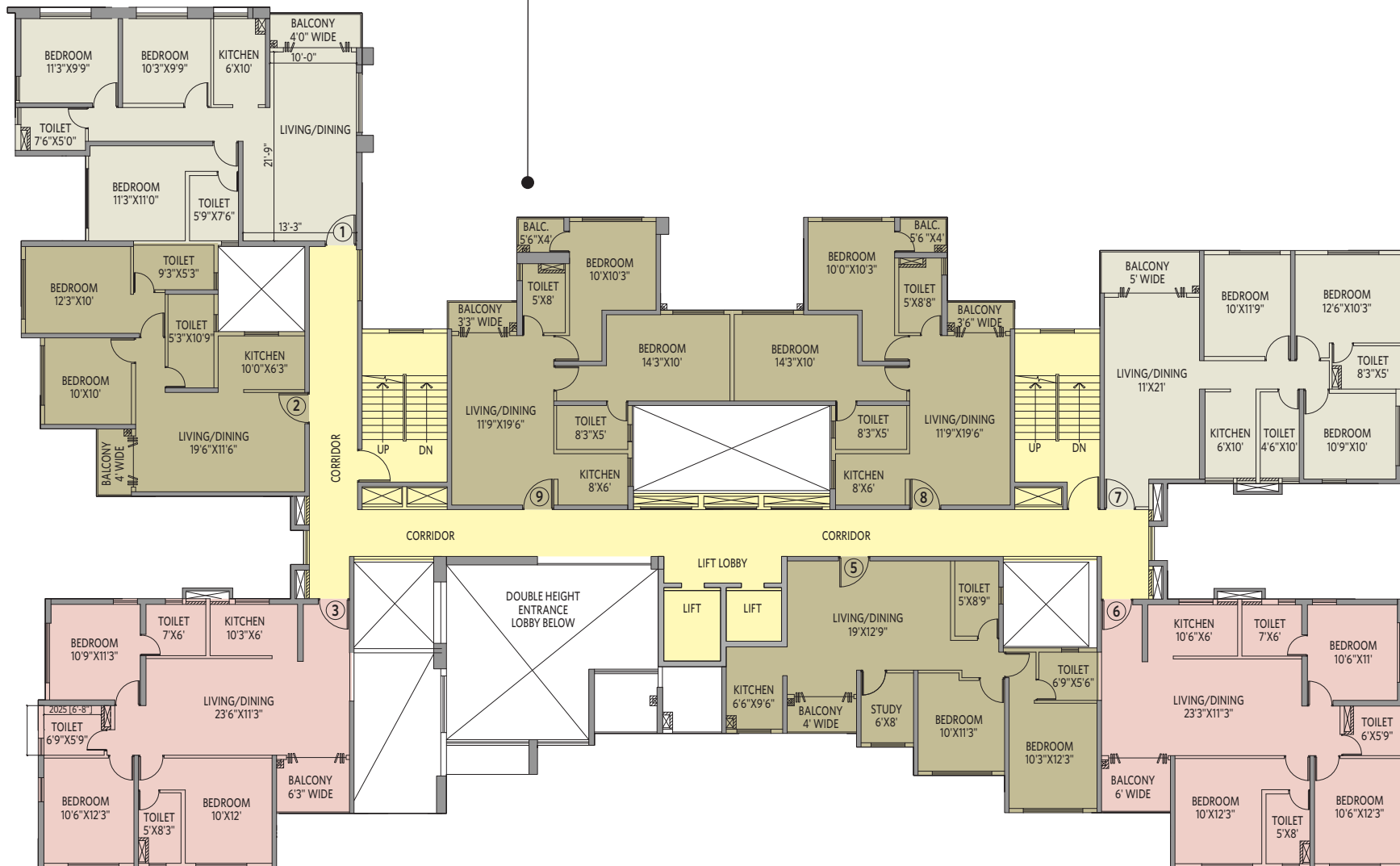
PLANS
PHASE II



Master Plan



2 BHK with 2 Toilets • Flat #9



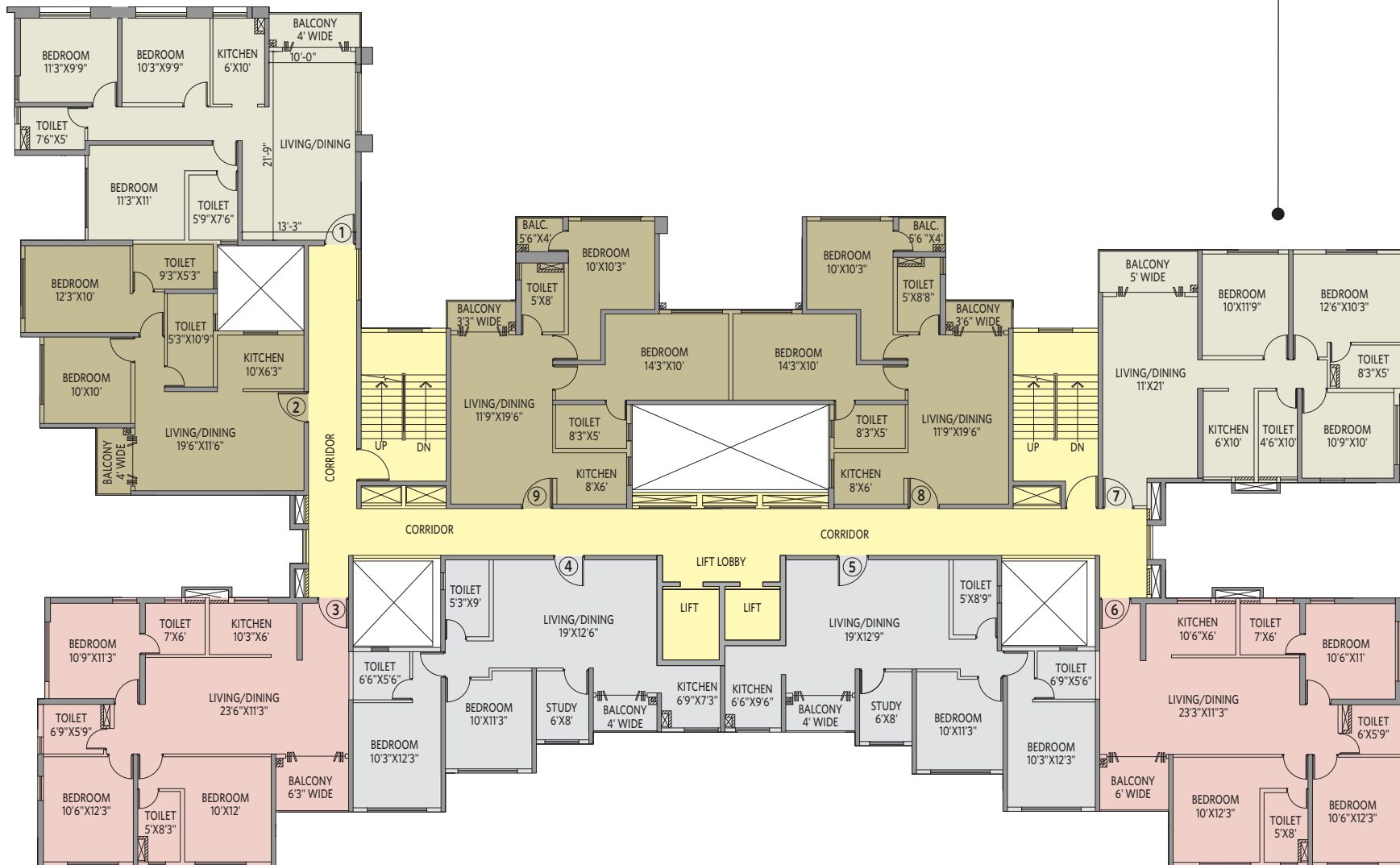
Ophelia - Block 7A
First floor plan

Flat #	Flat Type	All areas in sq ft		
		BUA	CA	BA
1	3BHK+2T	994	875	42
2	2BHK+2T	778	687	30
3	3BHK+3T	1070	941	51
4	-	-	-	-
5	2BHK+2T+S	871	760	31
6	3BHK+3T	1058	938	47
7	3BHK+2T	974	848	56
8	2BHK+2T	804	683	47
9	2BHK+2T	809	683	48

BHK = Bedroom, Hall, Kitchen T = Toilet S = Study
BUA = Built-up Area, CA = Carpet Area, BA = Balcony Area



3 BHK with 2 Toilets • Flat #7



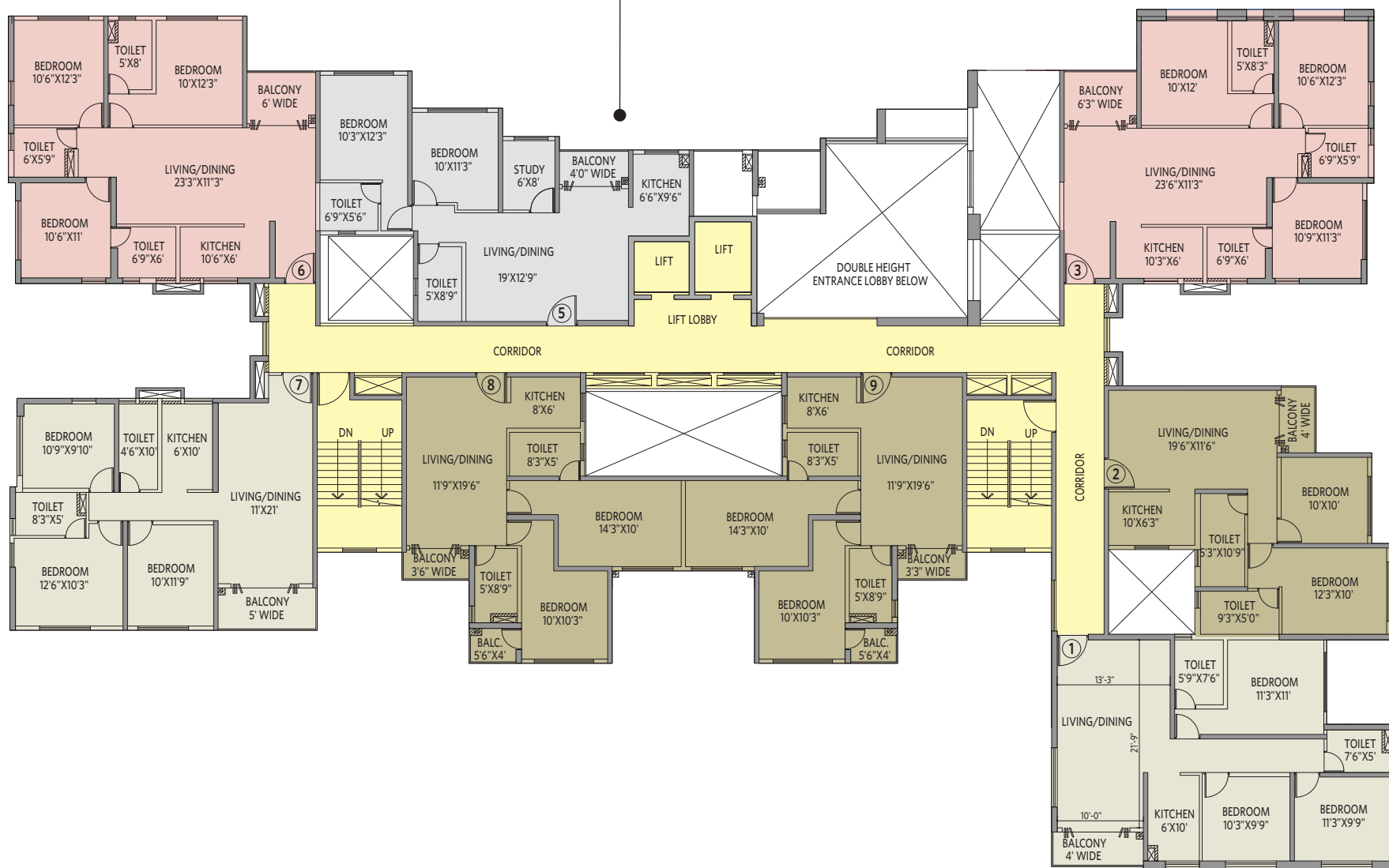
Ophelia - Block 7A
2nd-13th Typical floor plan All areas in sq ft

Flat #	Flat Type	BUA	CA	BA
1	3BHK+2T	994	875	42
2	2BHK+2T	778	687	30
3	3BHK+3T	1065	941	51
4	2BHK+2T+S	847	741	29
5	2BHK+2T+S	869	760	31
6	3BHK+3T	1058	938	47
7	3BHK+2T	974	848	56
8	2BHK+2T	804	683	47
9	2BHK+2T	809	683	48

BHK = Bedroom, Hall, Kitchen T = Toilet S = Study
BUA = Built-up Area, CA = Carpet Area, BA = Balcony Area



2 BHK with 2 Toilets & Study • Flat #5



Europa - Block 7G
First floor plan

Flat #	Flat Type	BUA	CA	BA
1	3BHK+2T	994	872	42
2	2BHK+2T	778	687	30
3	3BHK+3T	1070	941	51
4	-	-	-	-
5	2BHK+2T+S	871	760	31
6	3BHK+3T	1058	938	47
7	3BHK+2T	974	848	56
8	2BHK+2T	804	684	47
9	2BHK+2T	809	687	48

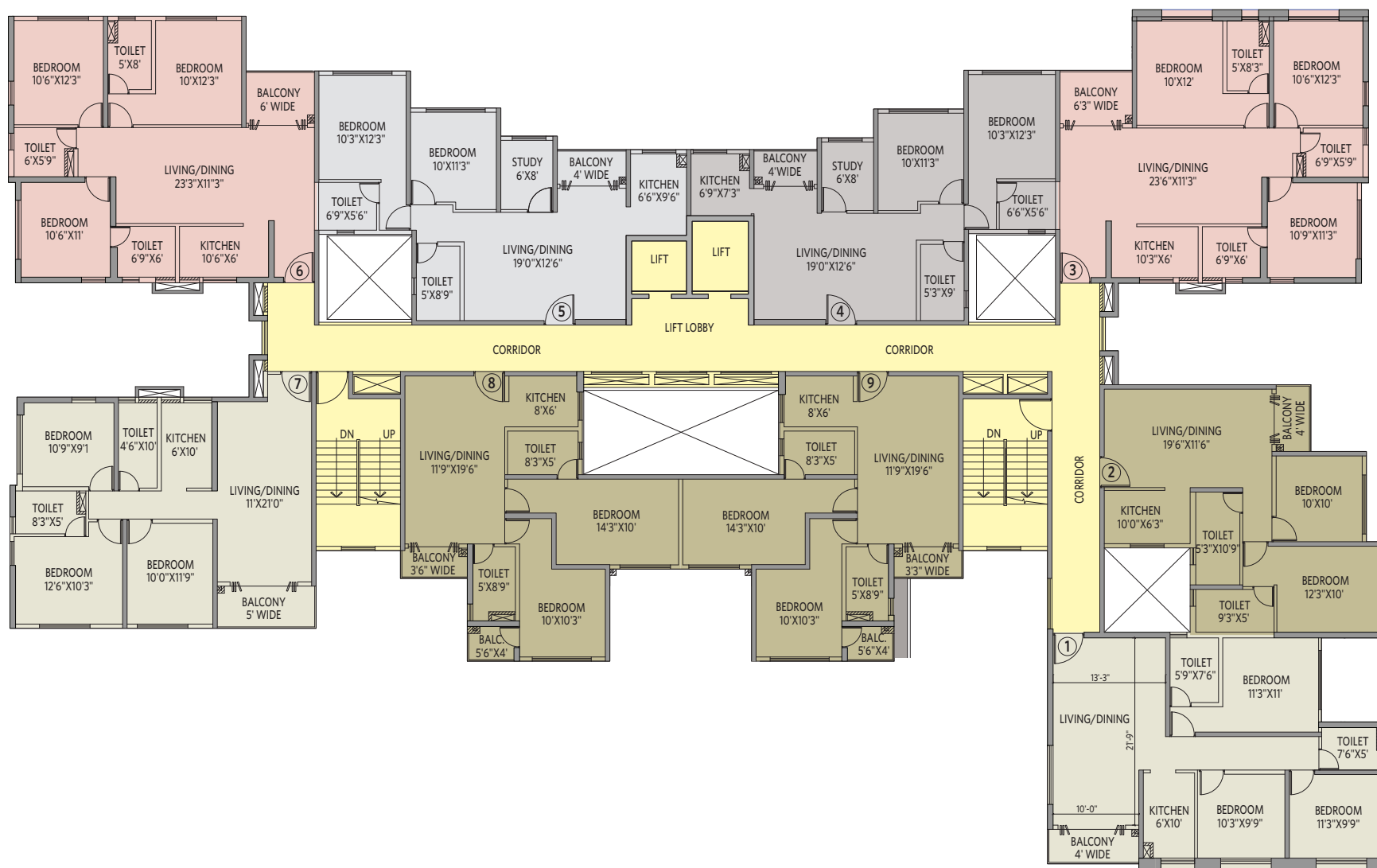
BHK = Bedroom, Hall, Kitchen T = Toilet S = Study
BUA = Built-up Area, CA = Carpet Area, BA = Balcony Area



Europa



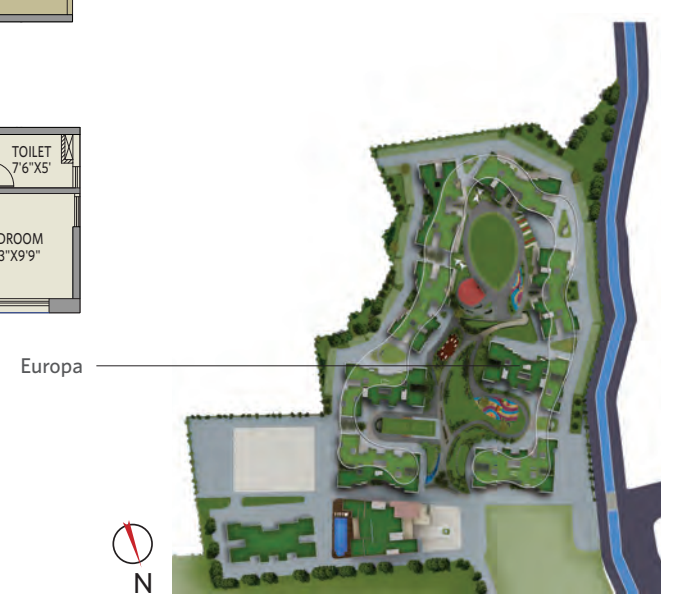
3 BHK with 3 Toilets • Flat #3



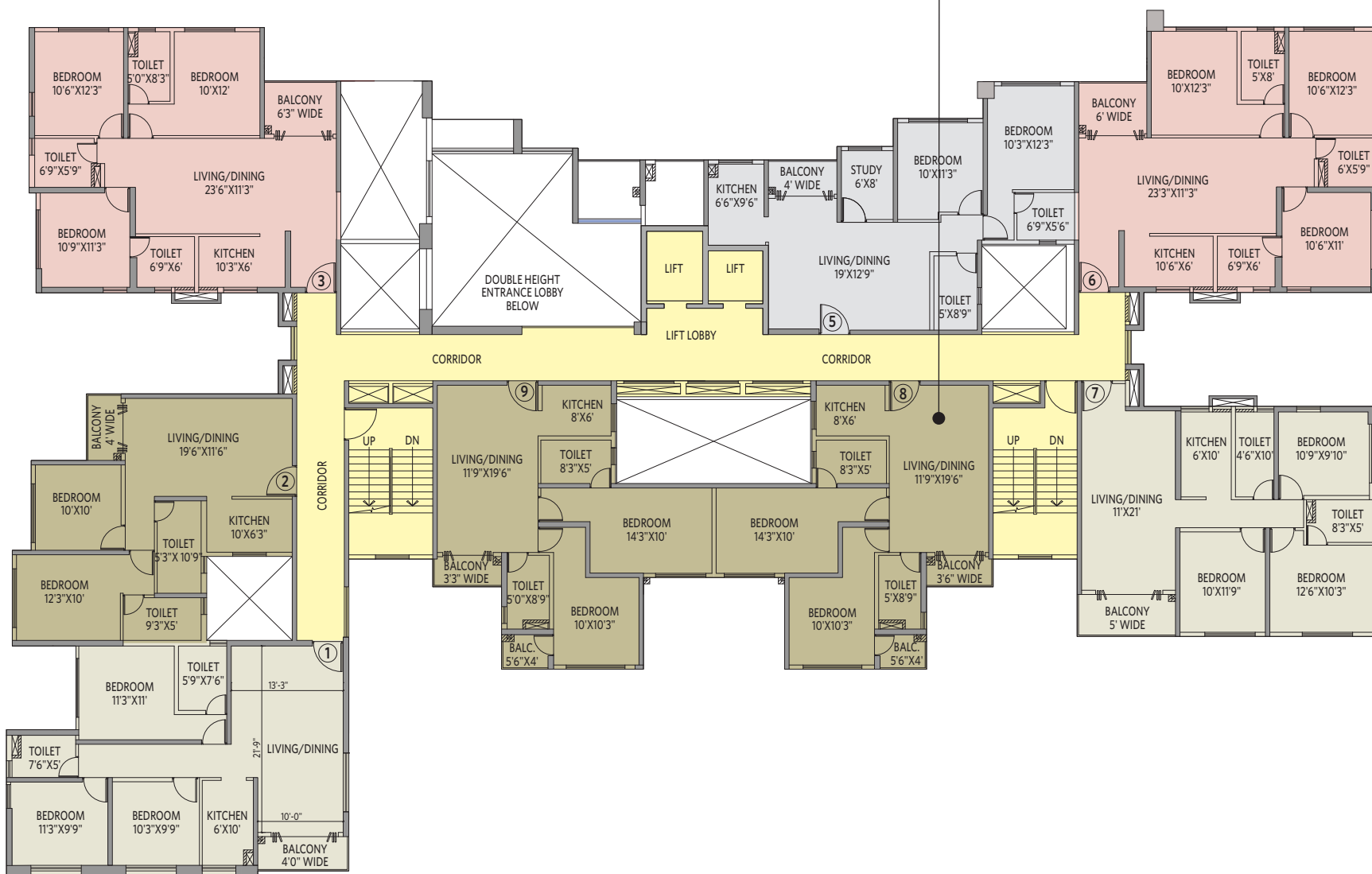
Europa - Block 7G
2nd-13th Typical floor plan All areas in sq ft

Flat #	Flat Type	BUA	CA	BA
1	3BHK+2T	994	872	42
2	2BHK+2T	778	687	30
3	3BHK+3T	1065	941	51
4	2BHK+2T+S	847	741	29
5	2BHK+2T+S	869	760	31
6	3BHK+3T	1058	938	47
7	3BHK+2T	974	848	56
8	2BHK+2T	804	684	47
9	2BHK+2T	809	687	48

BHK = Bedroom, Hall, Kitchen T = Toilet S = Study
BUA = Built-up Area, CA = Carpet Area, BA = Balcony Area



2 BHK with 2 Toilets • Flat #8



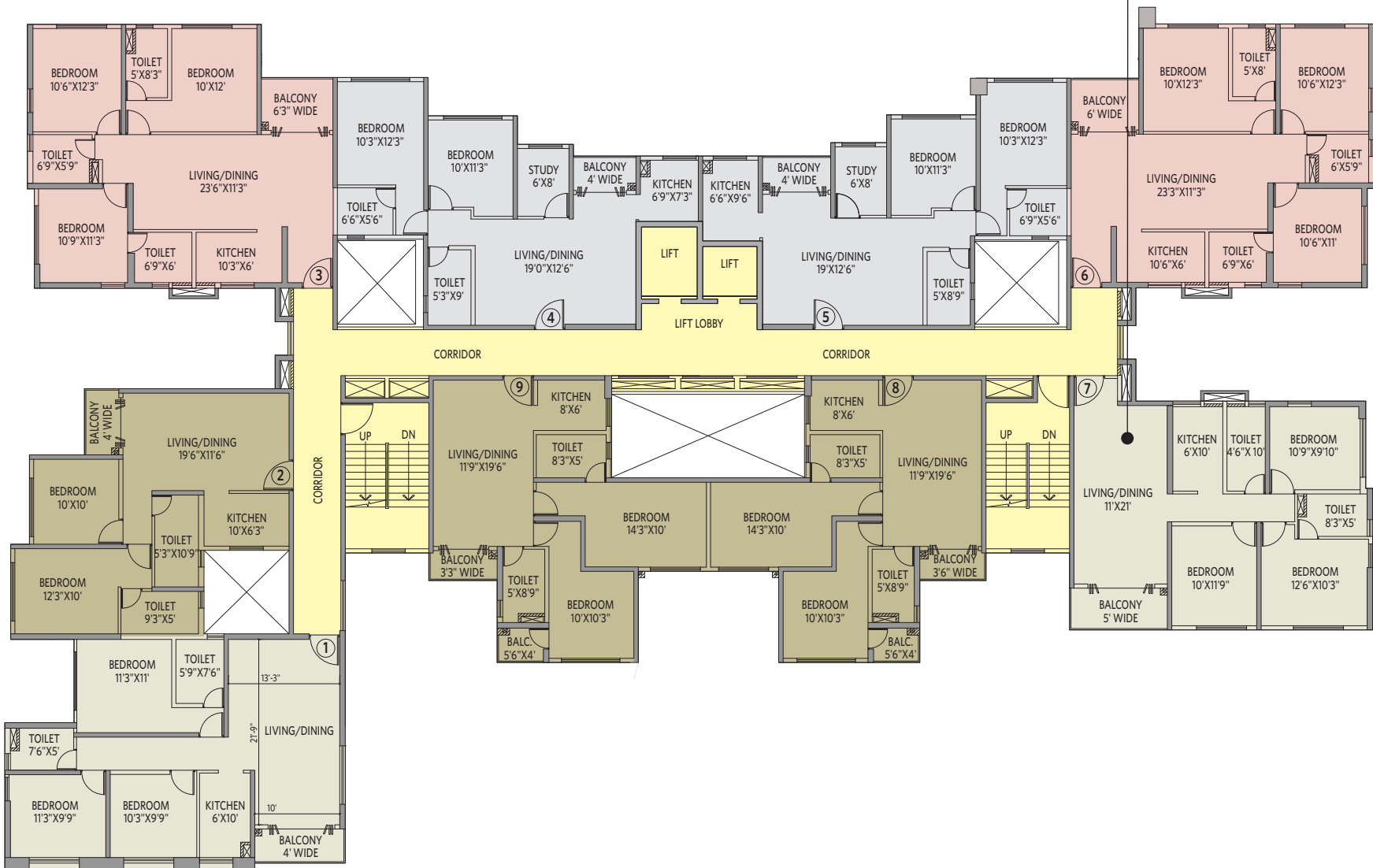
Bianca - Block 7B
First floor plan

Flat #	Flat Type	BUA	CA	BA
1	3BHK+2T	991	872	42
2	2BHK+2T	779	687	30
3	3BHK+3T	1070	941	51
4	-	-	-	-
5	2BHK+2T+S	873	759	31
6	3BHK+3T	1058	938	47
7	3BHK+2T	974	848	56
8	2BHK+2T	804	684	47
9	2BHK+2T	809	687	48

BHK = Bedroom, Hall, Kitchen T = Toilet S = Study
BUA = Built-up Area, CA = Carpet Area, BA = Balcony Area



3 BHK with 2 Toilets • Flat #7



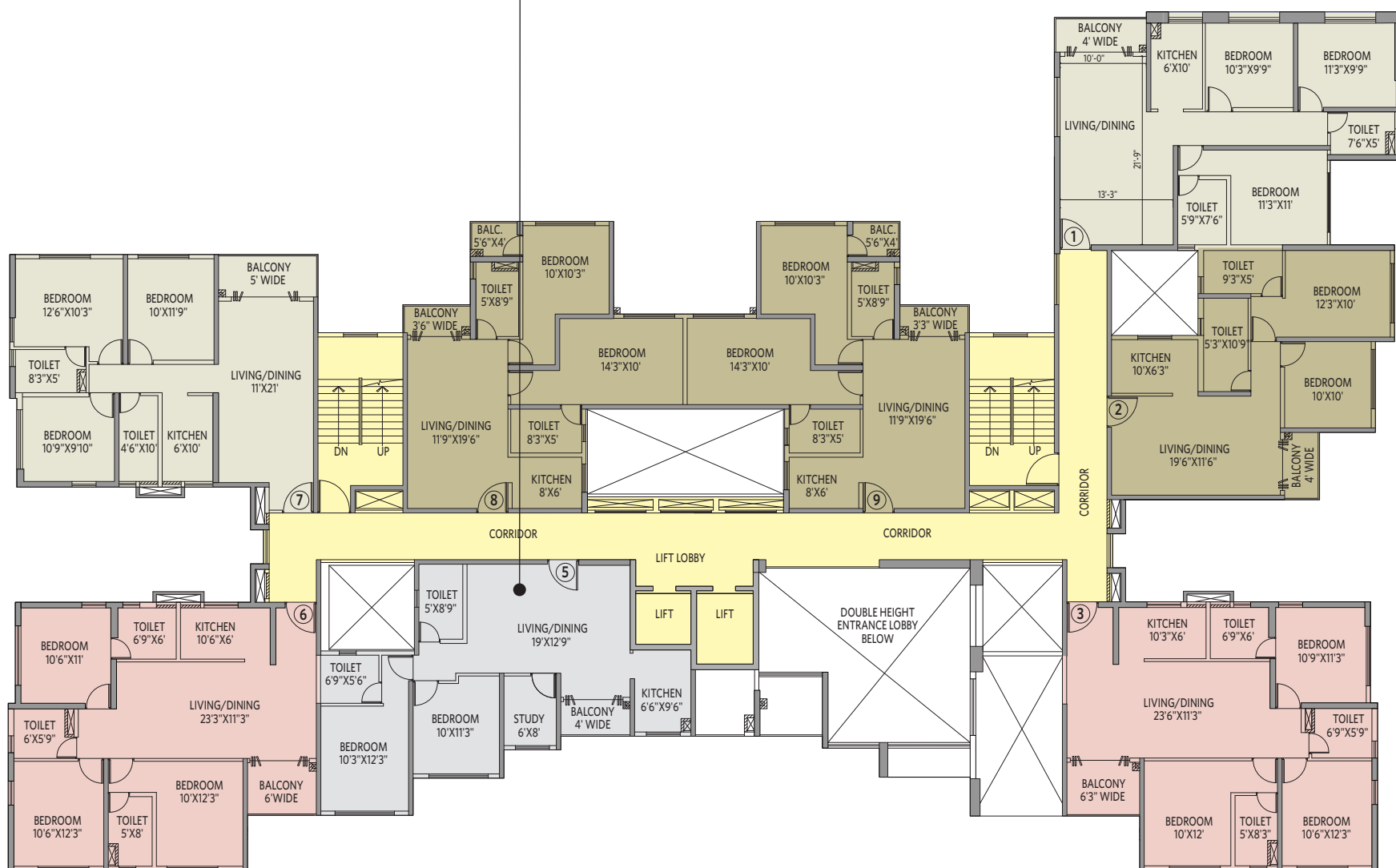
Bianca - Block 7B
2nd-13th Typical floor plan All areas in sq ft

Flat #	Flat Type	BUA	CA	BA
1	3BHK+2T	991	872	42
2	2BHK+2T	779	687	30
3	3BHK+3T	1065	941	51
4	2BHK+2T+S	847	741	29
5	2BHK+2T+S	869	759	31
6	3BHK+3T	1058	938	47
7	3BHK+2T	974	848	56
8	2BHK+2T	804	684	47
9	2BHK+2T	809	687	48

BHK = Bedroom, Hall, Kitchen T = Toilet S = Study
BUA = Built-up Area, CA = Carpet Area, BA = Balcony Area



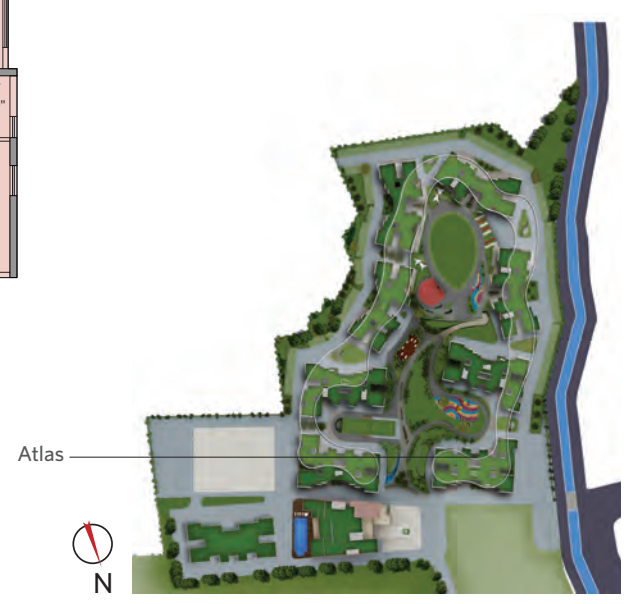
2 BHK with 2 Toilets & Study • Flat #5



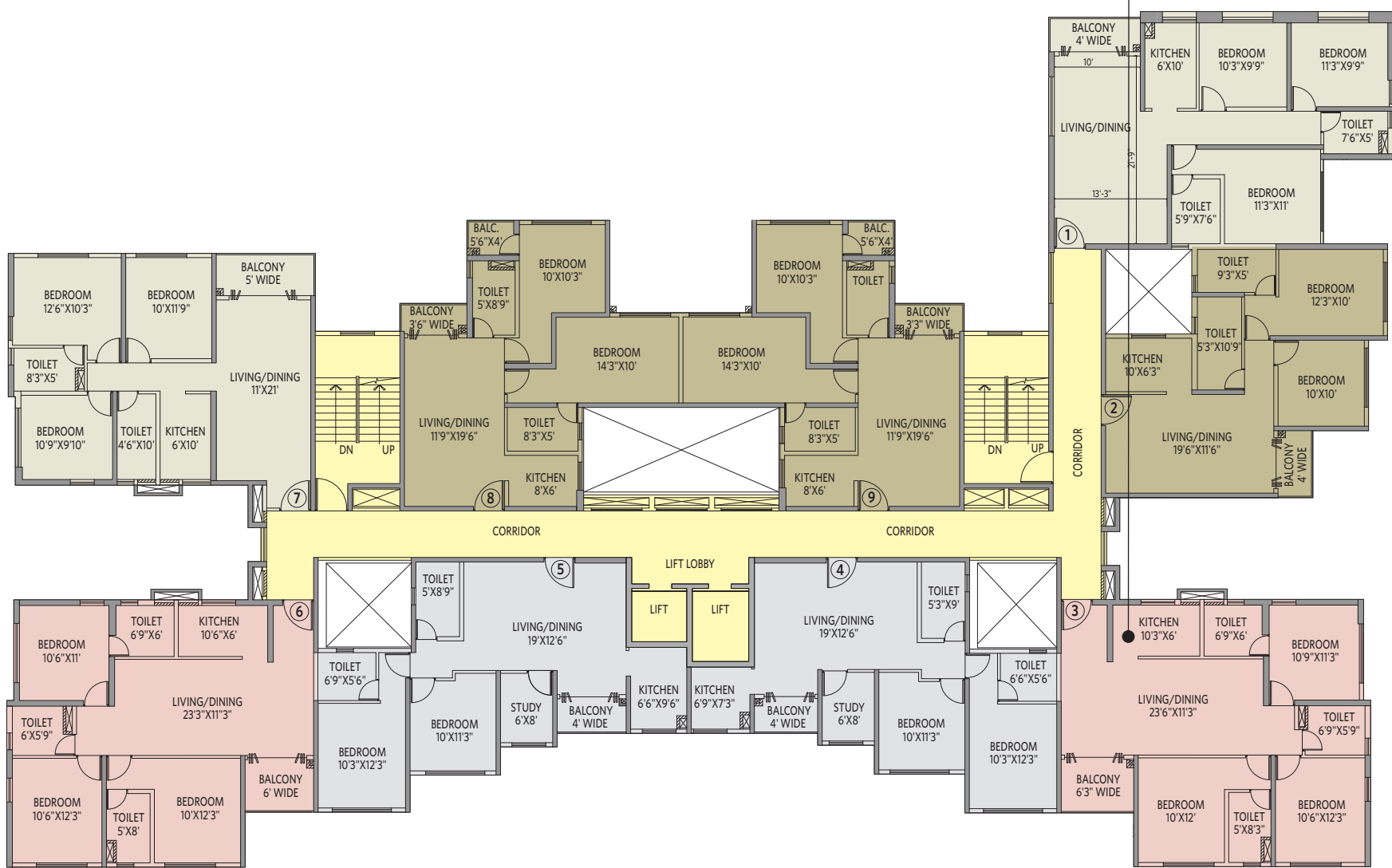
Atlas - Block 10
First floor plan

Flat #	Flat Type	BUA	CA	BA
1	3BHK+2T	991	872	42
2	2BHK+2T	779	687	30
3	3BHK+3T	1070	941	51
4	-	-	-	-
5	2BHK+2T+S	872	760	31
6	3BHK+3T	1058	938	47
7	3BHK+2T	974	848	56
8	2BHK+2T	804	684	47
9	2BHK+2T	809	687	48

BHK = Bedroom, Hall, Kitchen T = Toilet S = Study
BUA = Built-up Area, CA = Carpet Area, BA = Balcony Area



3 BHK with 3 Toilets • Flat #3



Atlas - Block 10
2nd-13th Typical floor plan All areas in sq ft

Flat #	Flat Type	BUA	CA	BA
1	3BHK+2T	991	872	42
2	2BHK+2T	779	687	30
3	3BHK+3T	1065	941	51
4	2BHK+2T+S	847	741	29
5	2BHK+2T+S	869	760	31
6	3BHK+3T	1058	938	47
7	3BHK+2T	974	848	56
8	2BHK+2T	804	683	47
9	2BHK+2T	809	687	48

BHK = Bedroom, Hall, Kitchen T = Toilet S = Study
BUA = Built-up Area, CA = Carpet Area, BA = Balcony Area



2 BHK with 2 Toilets & Study • Flat #5



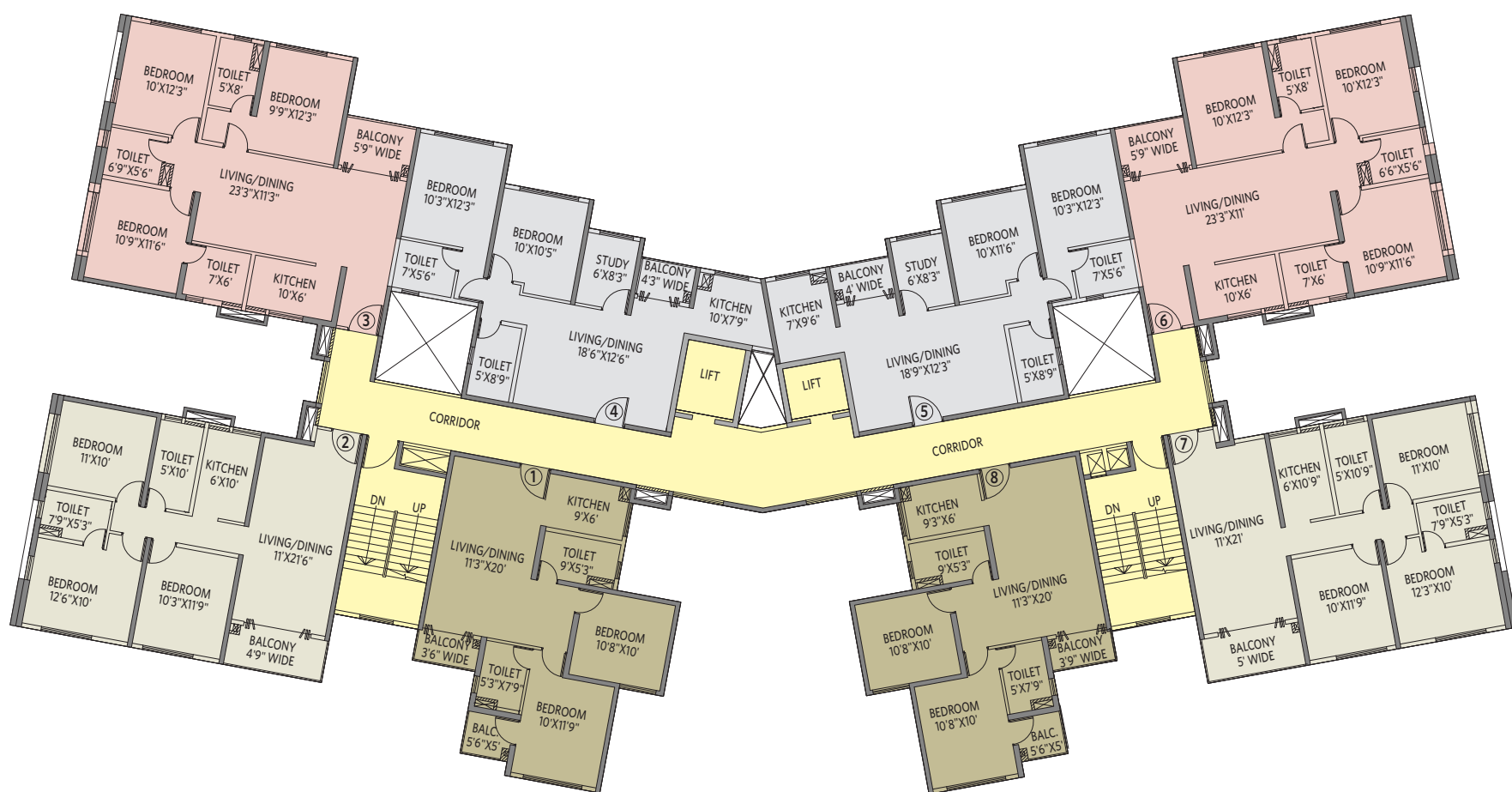
Mynsa ~ Block 7F
First floor plan

Flat #	Flat Type	All areas in sq ft			
		BUA	CA	BA	OT
1	2BHK+2T	799	673	52	582
2	3BHK+2T	987	860	54	365
3	3BHK+3T	1057	931	46	-
4	-	-	-	-	-
5	2BHK+2T+S	855	749	27	-
6	3BHK+3T	1048	927	45	-
7	3BHK+2T	980	851	58	-
8	2BHK+2T	799	672	53	440

BHK = Bedroom, Hall, Kitchen T = Toilet S = Study
BUA = Built-up Area, CA = Carpet Area, BA = Balcony Area



3 BHK with 3 Toilets • Flat #6



Mynsa - Block 7F
2nd-13th Typical floor plan All areas in sq ft

Flat #	Flat Type	BUA	CA	BA
1	2BHK+2T	799	673	52
2	3BHK+2T	987	860	54
3	3BHK+3T	1053	931	46
4	2BHK+2T+S	837	732	26
5	2BHK+2T+S	852	749	27
6	3BHK+3T	1048	927	45
7	3BHK+2T	980	851	58
8	2BHK+2T	799	672	53

BHK = Bedroom, Hall, Kitchen T = Toilet S = Study
BUA = Built-up Area, CA = Carpet Area, BA = Balcony Area



3 BHK with 2 Toilets • Flat #7



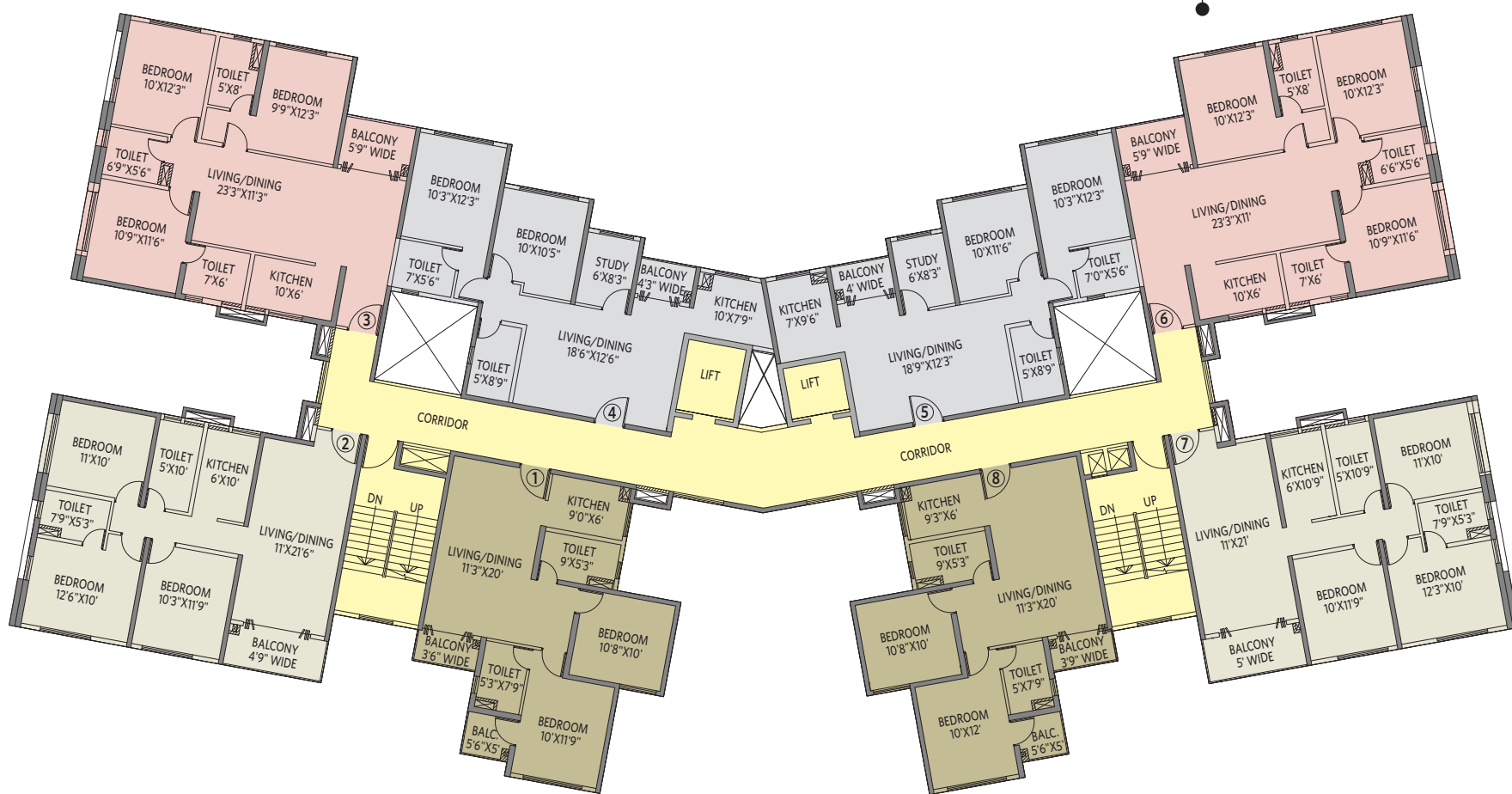
Orion - Block 7C
First floor plan

Flat #	Flat Type	BUA	CA	BA	OT
1	2BHK+2T	800	671	52	-
2	3BHK+2T	987	860	54	-
3	3BHK+3T	1058	931	46	-
4	-	-	-	-	-
5	2BHK+2T+S	855	749	26	-
6	3BHK+3T	1048	928	45	-
7	3BHK+2T	980	851	58	477
8	2BHK+2T	801	672	53	301

BHK = Bedroom, Hall, Kitchen T = Toilet S = Study
 BUA = Built-up Area, CA = Carpet Area, BA = Balcony Area,
 OT = Open Terrace



3 BHK with 3 Toilets • Flat #6

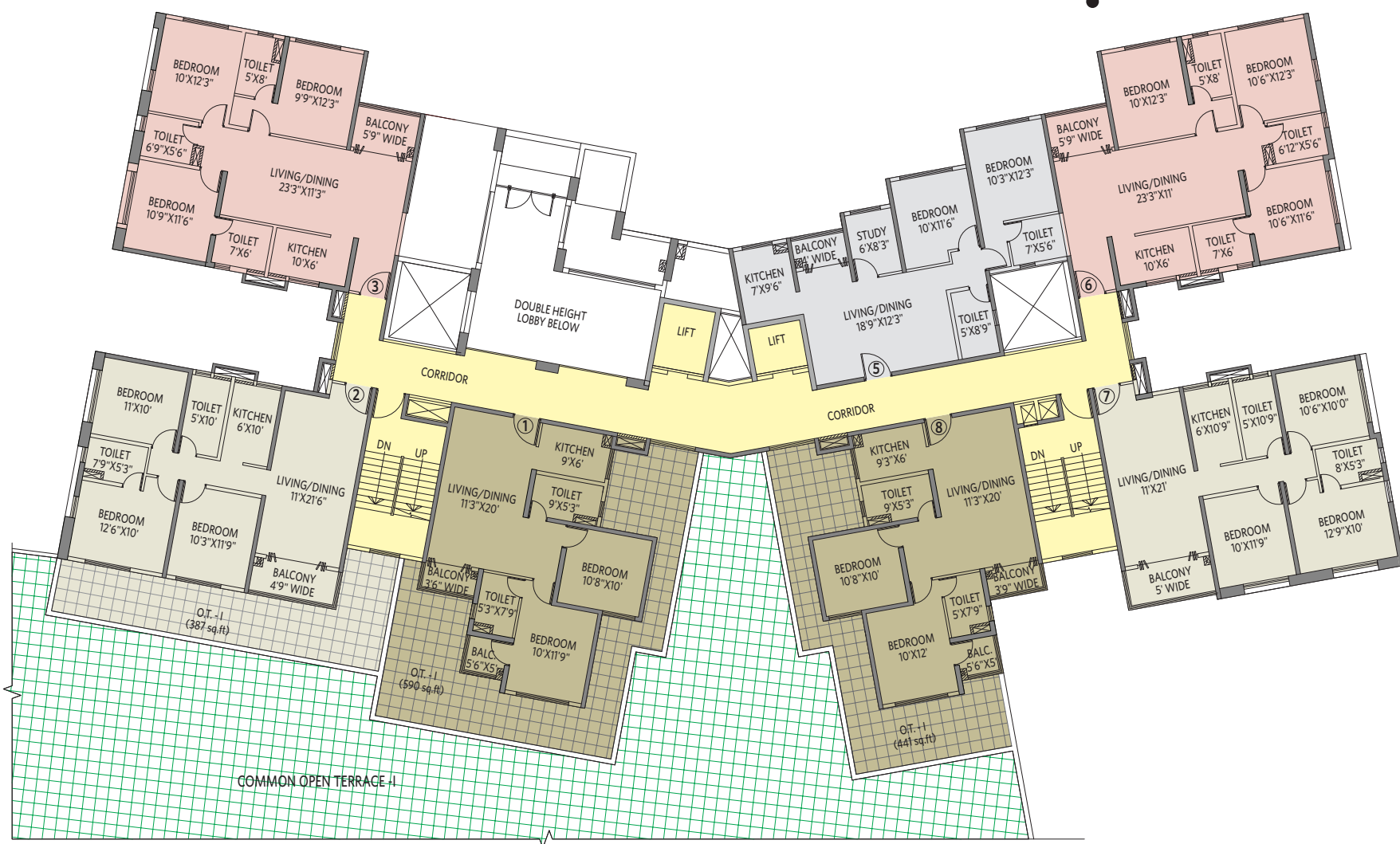


Orion - Block 7C				
2nd-13th Typical floor plan All areas in sq ft				
Flat #	Flat Type	BUA	CA	BA
1	2BHK+2T	800	671	52
2	3BHK+2T	987	860	54
3	3BHK+3T	1053	931	46
4	2BHK+2T+S	838	732	26
5	2BHK+2T+S	852	749	26
6	3BHK+3T	1048	928	45
7	3BHK+2T	980	851	58
8	2BHK+2T	801	672	53

BHK = Bedroom, Hall, Kitchen T = Toilet S = Study
 BUA = Built-up Area, CA = Carpet Area, BA = Balcony Area



3 BHK with 3 Toilets • Flat #6



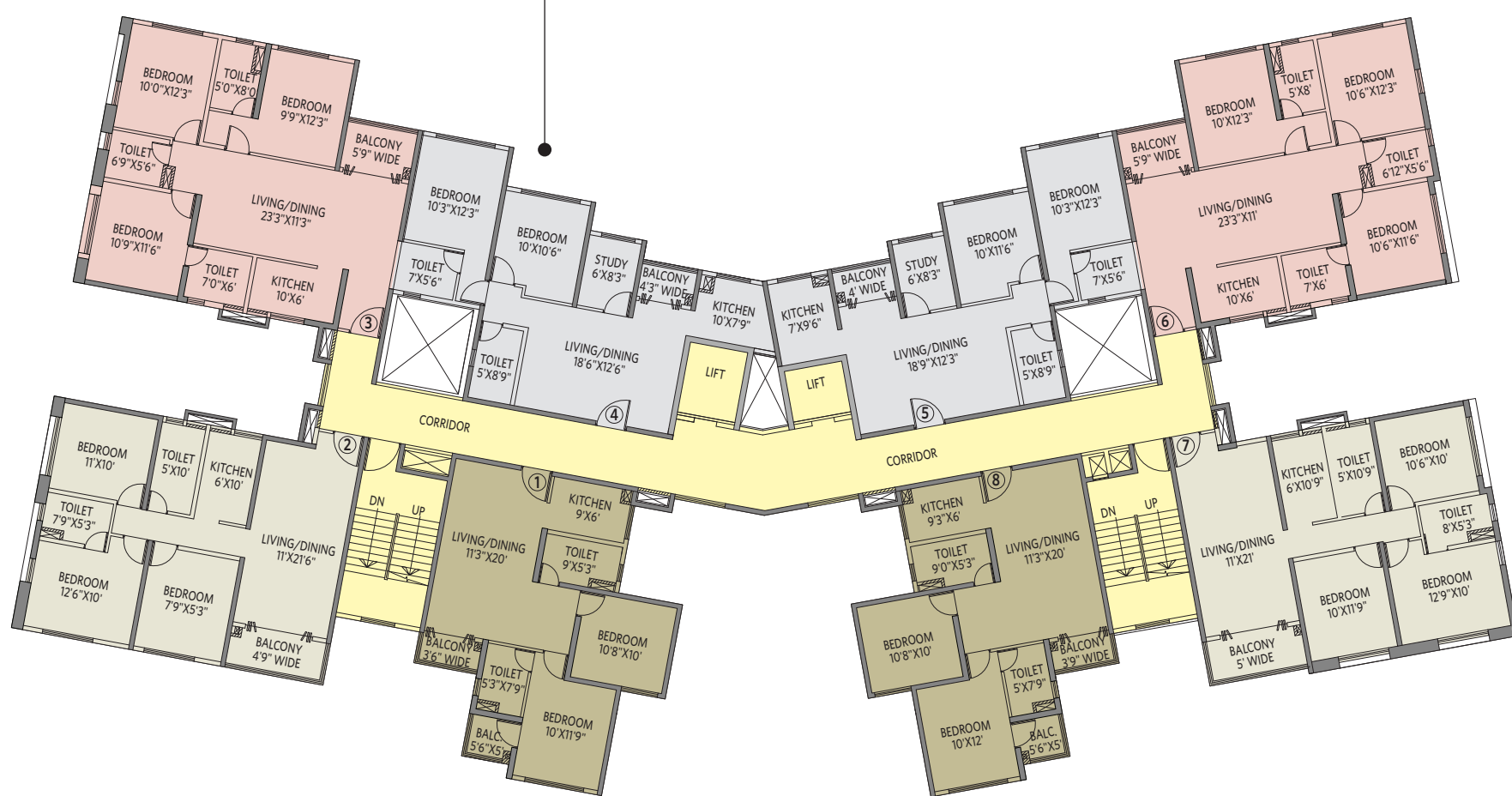
Cygnus - Block 7D
First floor plan

Flat #	Flat Type	BUA	CA	BA	OT
1	2BHK+2T	800	673	52	590
2	3BHK+2T	987	860	54	387
3	3BHK+3T	1058	931	46	-
4	-	-	-	-	-
5	2BHK+2T+S	855	749	26	-
6	3BHK+3T	1051	934	45	-
7	3BHK+2T	984	857	58	-
8	2BHK+2T	801	672	52	441

BHK = Bedroom, Hall, Kitchen T = Toilet S = Study
BUA = Built-up Area, CA = Carpet Area, BA = Balcony Area, OT = Open Terrace



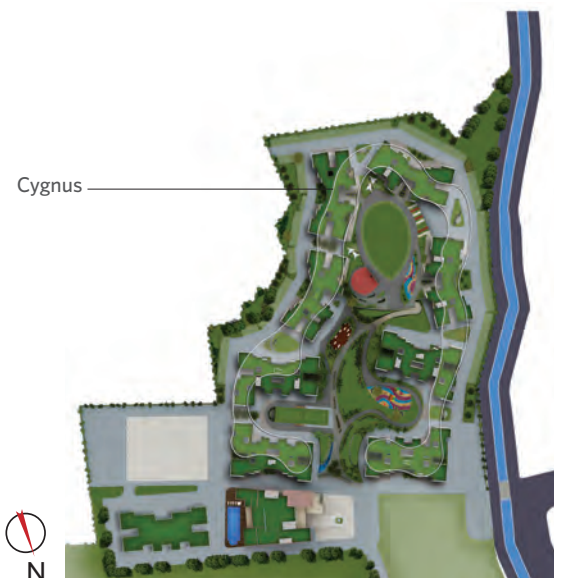
2 BHK with 2 Toilets & Study • Flat #4



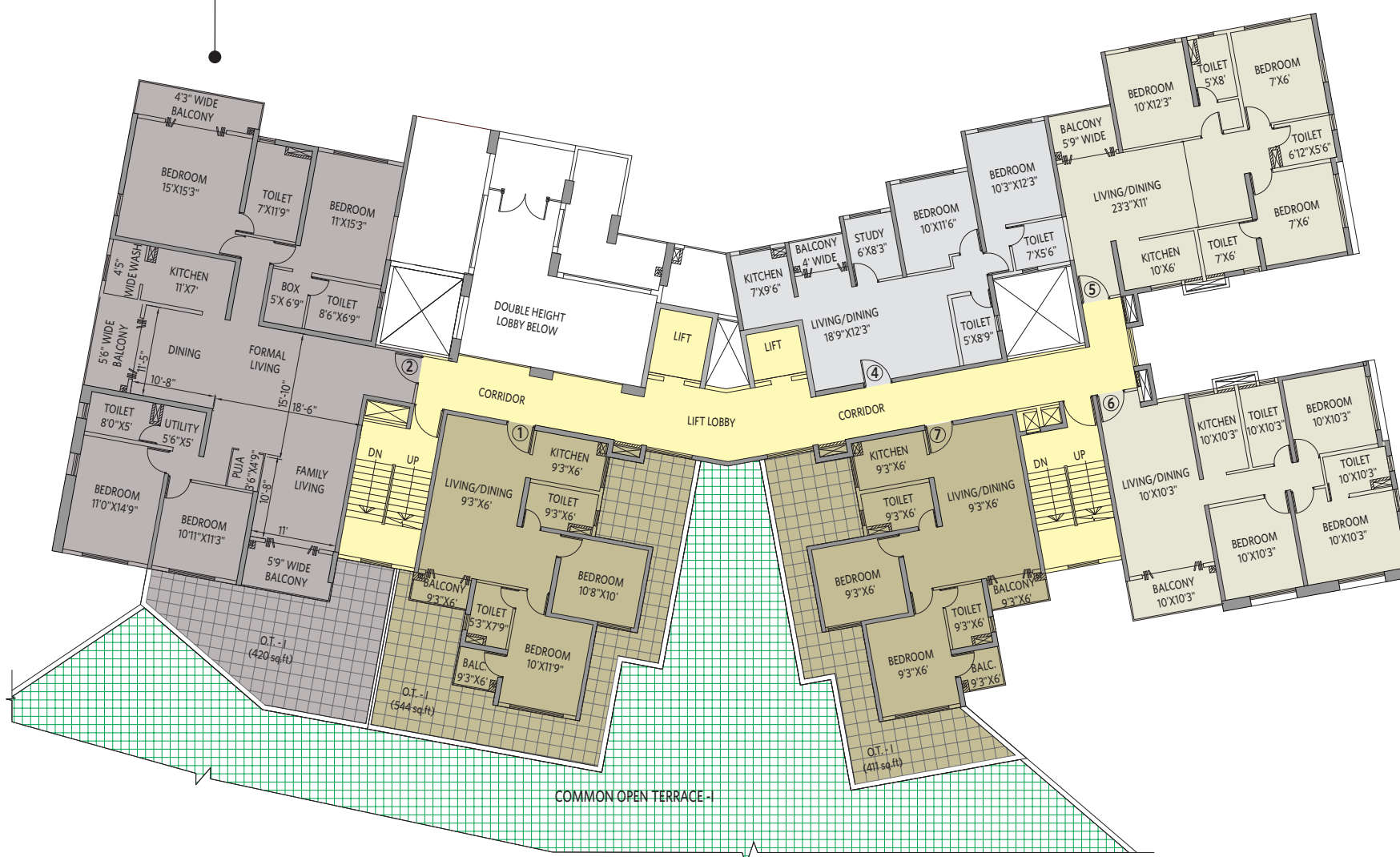
Cygnus - Block 7D
2nd-13th Typical floor plan All areas in sq ft

Flat #	Flat Type	BUA	CA	BA
1	2BHK+2T	800	673	52
2	3BHK+2T	987	860	54
3	3BHK+3T	1053	931	46
4	2BHK+2T+S	838	732	26
5	2BHK+2T+S	852	749	26
6	3BHK+3T	1051	934	45
7	3BHK+2T	984	857	58
8	2BHK+2T	801	672	52

BHK = Bedroom, Hall, Kitchen T = Toilet S = Study
BUA = Built-up Area, CA = Carpet Area, BA = Balcony Area



4 BHK with 3 Toilets • Flat #2



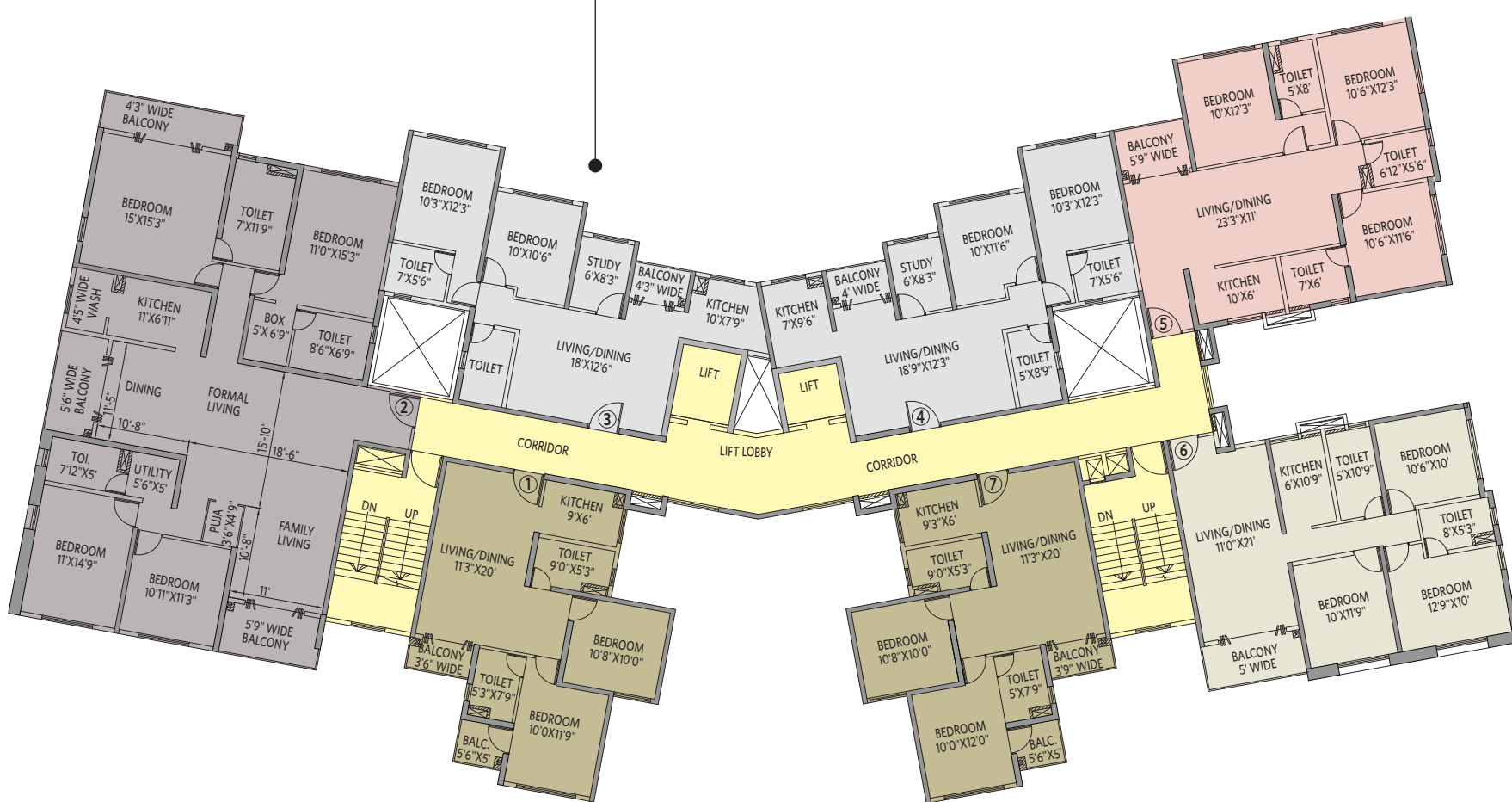
Phoenix ~ Block 7E
First floor plan

Flat #	Flat Type	BUA	CA	BA	OT
1	2BHK+2T	802	674	52	542
2	4BHK+3T	2124	1799	198	419
3	-	-	-	-	-
4	2BHK+2T+S	855	749	26	-
5	3BHK+3T	1051	933	45	-
6	3BHK+2T	985	857	58	-
7	2BHK+2T	801	672	53	413

BHK = Bedroom, Hall, Kitchen T = Toilet S = Study
BUA = Built-up Area, CA = Carpet Area, BA = Balcony Area,
OT = Open Terrace



2 BHK with 2 Toilets & Study • Flat #3



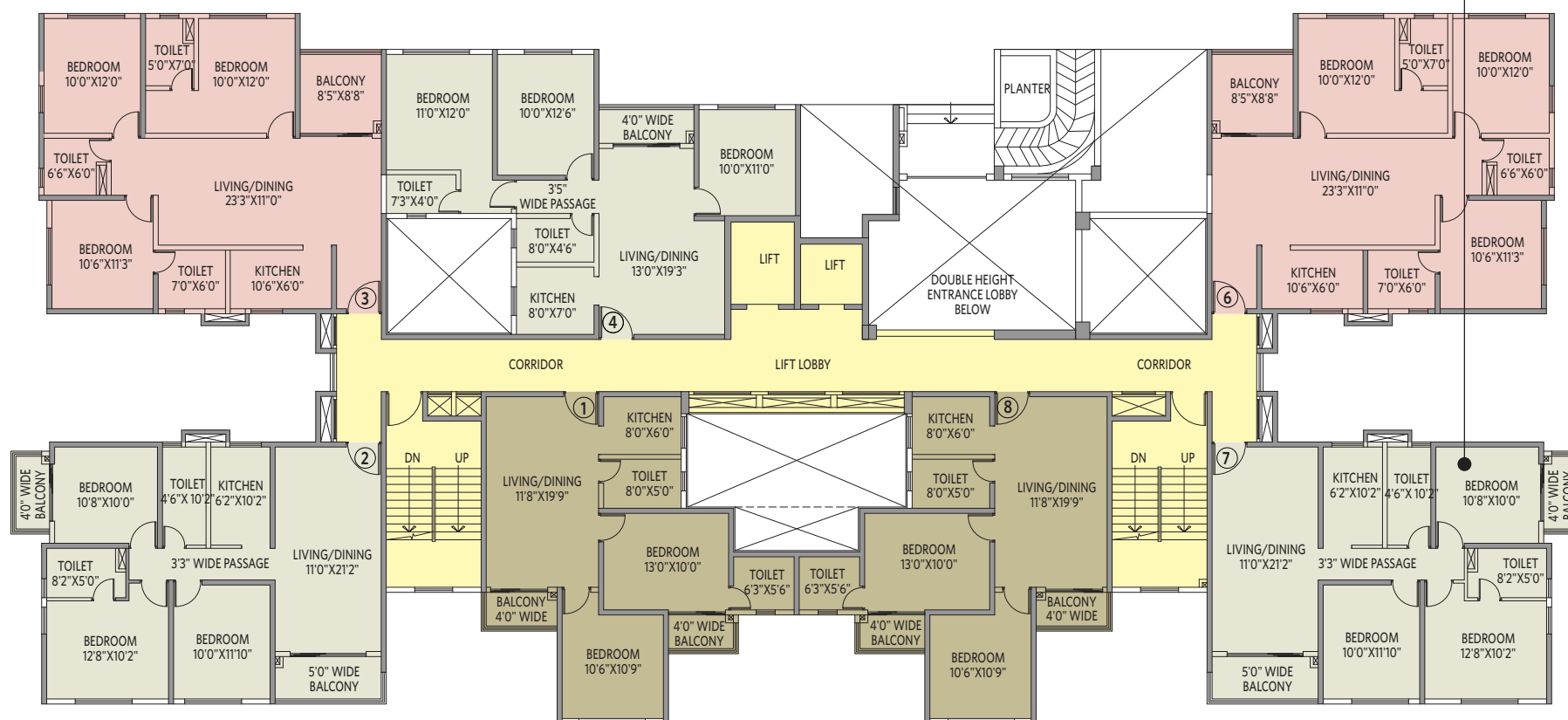
Phoenix - Block 7E
2nd-13th Typical floor plan All areas in sq ft

Flat #	Flat Type	BUA	CA	BA
1	2BHK+2T	802	674	52
2	4BHK+3T	2118	1799	198
3	2BHK+2T+S	839	731	26
4	2BHK+2T+S	852	749	26
5	3BHK+3T	1051	933	45
6	3BHK+2T	985	857	58
7	2BHK+2T	801	672	53

BHK = Bedroom, Hall, Kitchen T = Toilet S = Study
BUA = Built-up Area, CA = Carpet Area, BA = Balcony Area



3 BHK with 2 Toilets • Flat #7



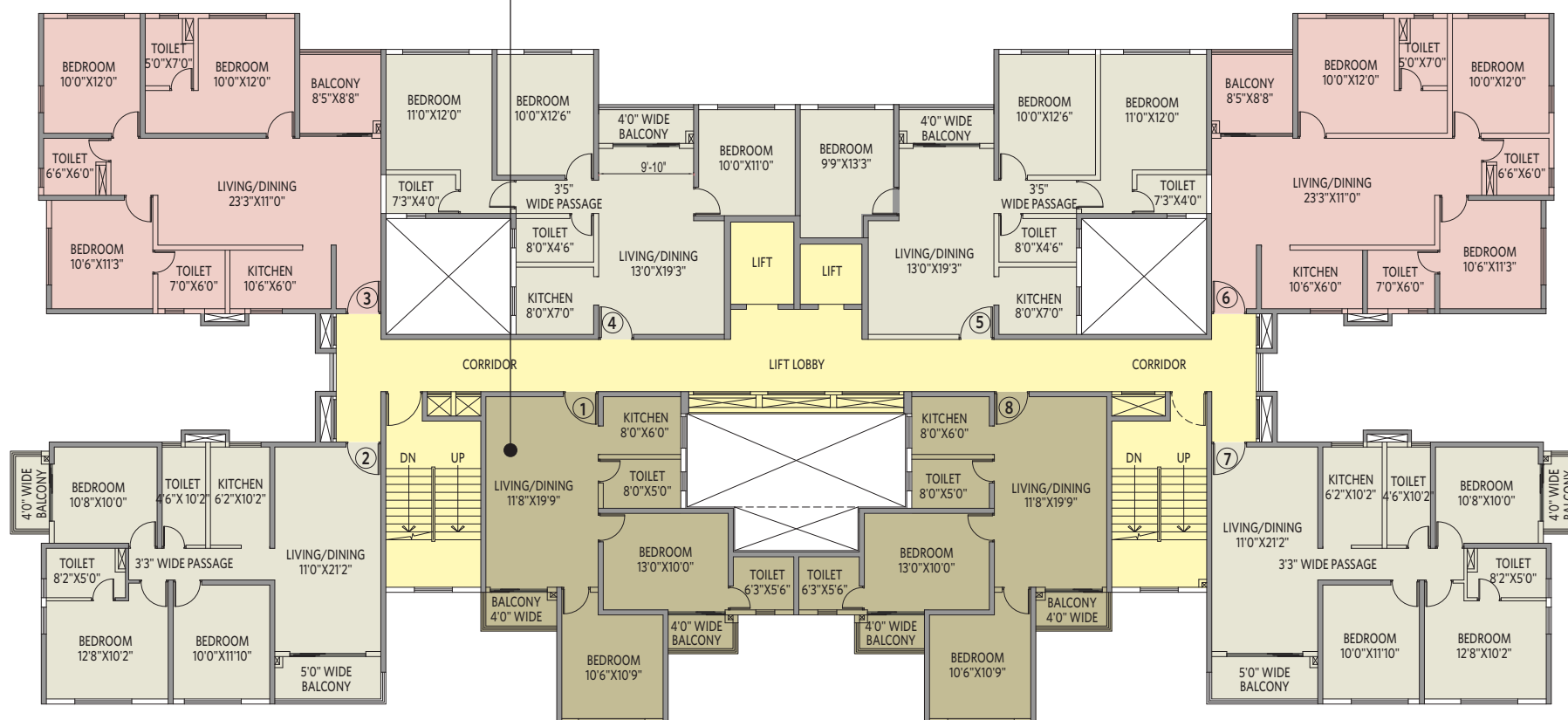
Capella - Block 11
First floor plan

Flat #	Flat Type	BUA	CA	BA
1	2BHK+2T	766	636	59
2	3BHK+2T	994	836	89
3	3BHK+3T	1075	924	71
4	3BHK+2T	925	809	39
5	-	-	-	-
6	3BHK+3T	1084	924	71
7	3BHK+2T	994	836	89
8	2BHK+2T	766	636	59

BHK = Bedroom, Hall, Kitchen T = Toilet S = Study
BUA = Built-up Area, CA = Carpet Area, BA = Balcony Area



2 BHK with 2 Toilets • Flat #1



Capella ~ Block 11
2nd-13th Typical floor plan All areas in sq ft

Flat #	Flat Type	BUA	CA	BA
1	2BHK+2T	766	636	59
2	3BHK+2T	994	836	89
3	3BHK+3T	1075	924	71
4	3BHK+2T	922	809	39
5	3BHK+2T	935	822	39
6	3BHK+3T	1075	924	71
7	3BHK+2T	994	836	89
8	2BHK+2T	766	636	59

BHK = Bedroom, Hall, Kitchen T = Toilet S = Study
BUA = Built-up Area, CA = Carpet Area, BA = Balcony Area

